

## **Revisions to Organizational Structure**

Sumitomo Forestry Co., Ltd. hereby announce that the Board of Directors met on February 29, 2016 and passed the following resolutions for personnel transfers and revisions to the organizational structure of Sumitomo Forestry Co., Ltd. to take effect on April 1, 2016.

### **I. Organizational revisions (to take effect on April 1)**

#### **1. Reorganization of the Timber and Building Materials Division**

##### **(1) Abolishment of the Domestic Timber & Building Materials Section**

- i) The Domestic Timber & Building Materials Section will be abolished to facilitate decision making and turn the Timber and Building Materials Division into a flat structure.

##### **(2) Name change of the Business Development Department into the Business Planning Department**

- i) The Business Development Department will be renamed the Business Planning Department to clarify its responsibility for planning work, including planning of overseas strategies.

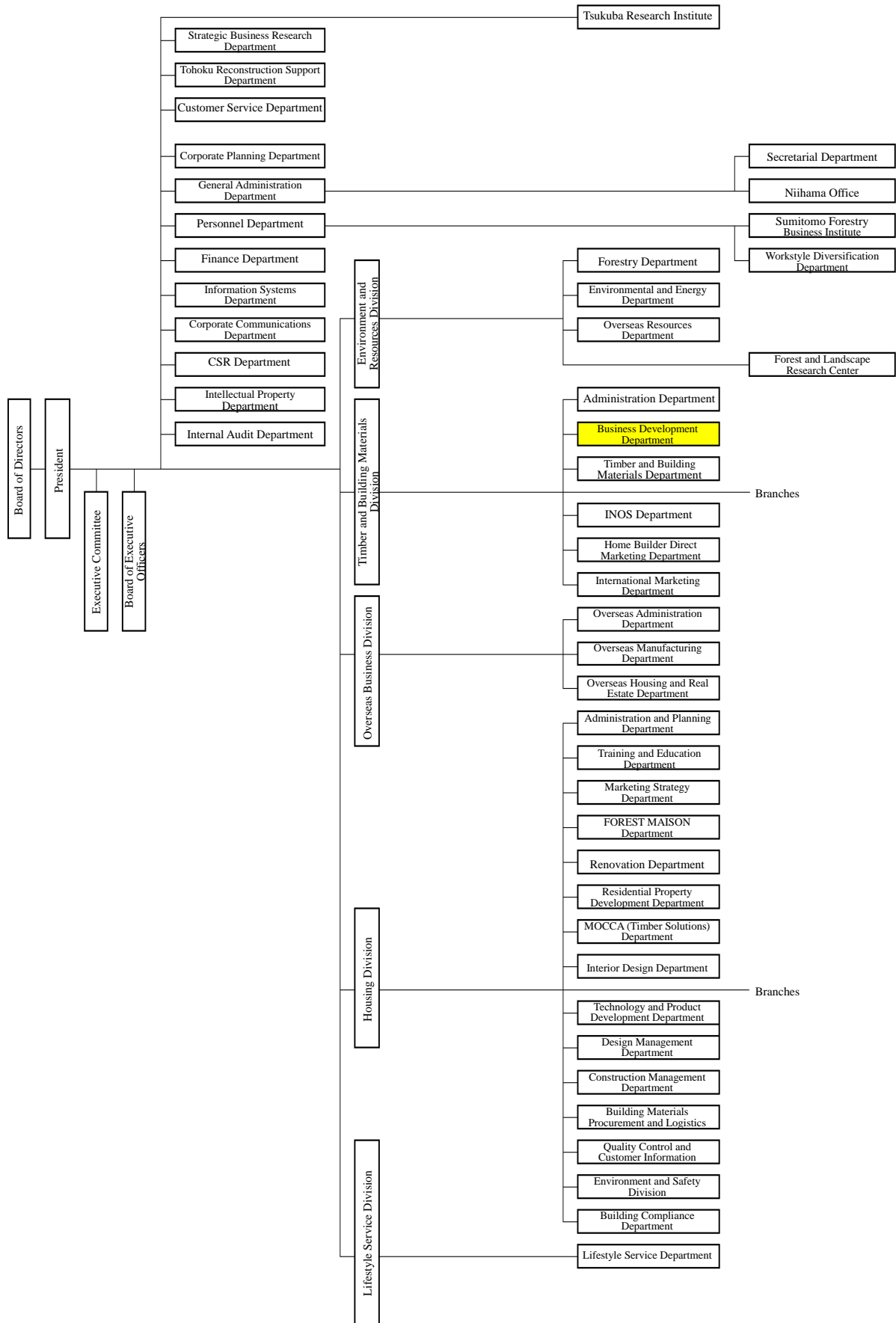
#### **2. Reorganization of the Housing Division**

##### **(1) The Oyama Branch will be shut down and converted into a sales office for the Utsunomiya Branch.**

##### **(2) i) The general managers of branches will oversee production operations with the status of the Construction Control Groups of the Construction Control Center changed from groups residing in branches to groups belonging to branches.**

- ii) Following the changes mentioned above, the Construction Control Center Office placed under the Construction Control Center will be abolished. The Tokyo Region Production Department will also be divided into the Tokyo Production Department and the Kanagawa Production Department, resulting in a four production department system along with the Kinki Production Department and the Chukyo Production Department.

### 3. Organization Chart (As of April 1, 2016)



# Housing Division/Branch Office

