

For Immediate Release

Sumitomo Forestry Co., Ltd

Awarded the Japan Wood Design Award 2015**Proposals that enrich homes and the lives of occupants through
experiencing the benefit and value of wood**

Sumitomo Forestry Co., Ltd. (President and Representative Director: Akira Ichikawa, Head Office: Chiyoda-ku, Tokyo; hereafter “Sumitomo Forestry”) announces today that six of Sumitomo Forestry Group’s entries have won awards at the new Japan Wood Design Award 2015 sponsored by the Forestry Agency. These winning entries are related to the Group’s products, materials, and technologies, and one of them received the Chairman’s Commendation Award.

The Japan Wood Design Award is an award system promoting the use of wood, by using awards to bring awareness to consumers about outstanding products and methods demonstrating the benefits and values of wood. Products and methods with outstanding designs are given awards based on three criteria: enriching lives, bringing good health, and enriching society, as long as they have anything to do with wood.

Sumitomo Forestry Group aims to realize a sustainable society by utilizing wood, which is a renewable resource, to put forth new proposals while continuing with research and development.

The six winning entries are stated below.

■ Recipient of the Judging Panel Chairman Commendation Award

- Bedroom environment combining a wooden interior with indirect lighting to improve sleep quality and reduce fatigue/ Sumitomo Forestry Co., Ltd

■ Other winning entries of the Japan Wood Design Award

- Multi-Balance (MB) Construction Method/ Sumitomo Forestry Co., Ltd
- “World’s Precious Wood” flooring series/ Sumitomo Forestry Co., Ltd
- Research and development of forest road networks on steep slopes in remote mountain areas capable of withstanding 20 tons / Sumitomo Forestry Co., Ltd
- “Japanese Oak Timber” series / Sumitomo Forestry Crest Co., Ltd
- TOTOROP / Sumitomo Forestry Crest Co., Ltd

Overview of products that received awards**■ Recipient of the Judging Panel Chairman Commendation Award****(1) Bedroom environment combining a wooden interior with indirect lighting to improve sleep quality and reduce fatigue**

To study the effects of improving sleep quality and reducing fatigue in a bedroom environment combining a wooden interior with indirect lighting, a clinical experiment was conducted with male adults. The experiment focused on using wood to reflect indirect lighting, making use of wood’s optical characteristic (which tends to absorb more blue wavelengths). The results show that by combining a



wooden interior with indirect lighting, a bedroom environment allowing the smooth transition of the parasympathetic nervous system into a state appropriate just before sleep can be created, suggesting functions of improving sleep quality and reducing fatigue, which can be used to promote the value of using timber.

■ Other winning entries of the Japan Wood Design Award

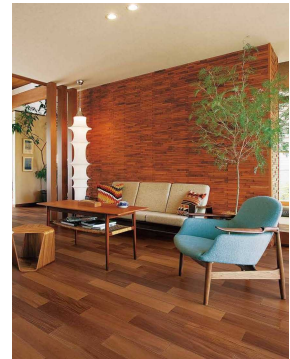
(1) Multi-Balance (MB) Construction Method

This is an advanced structural framework using *Super Cypress*, a laminated engineered wood for structural use made using Japanese cypress combined with leading technology; *Kizure Panel*, a load-bearing wall panel which reduces building deformation due to external forces such as earthquakes; *Earthquake Energy-Absorbing Panel*, which can withstand repeated tremors through its ability to absorb energy, and others. Domestic timber is actively used for the principal structural members, and high standards are maintained in functions sought after in residential homes, such as insulation, durability, fire resistance, and seismic resistance, to build homes which are strong, comfortable, and long-lasting.



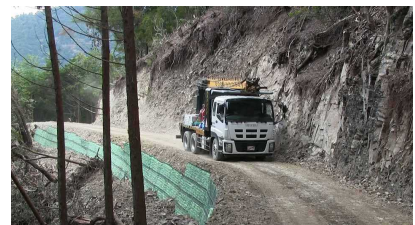
(2) “World’s Precious Wood” flooring series

A flooring material series of solid timber and sawn-board flooring using precious wood from around the world, including Japan. To be able to meet the requests of customers staying in homes built by Sumitomo Forestry, specially selected timber from Japan and other countries in the world are used for the flooring materials. The procurement route for each species is checked to ensure only legal and sustainable timber is used. The characteristics, texture and warmth of each species, such as oak, chestnut, cypress, walnut, cherry, maple, teak, and mahogany, are utilized to propose interior spaces manifesting affluent lifestyles.



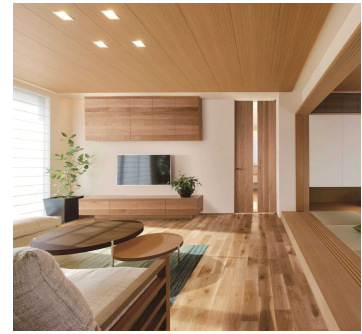
(3) Research and development of forest road networks on steep slopes in remote mountain areas capable of withstanding 20 tons

Revitalization of forestry is needed for regional revitalization, especially in mountainous areas, and the key to achieving this is being able to transport harvested timber at an affordable price. The development of forest road networks which are safe and passable by heavy trucks, including development of embanking materials, were carried out using scientific knowledge. As a sustainable cycle emerges with the progress of forest resource utilization, mountainous areas become regions rich in resources, contributing to the creation of jobs.



(4)“Japanese Oak Timber” series

Using Japanese oak which is methodically harvested, the unique features of each tree, such as the knots and colors of small-diameter trees, are utilized in the finishing of interior building materials such as flooring, stairs, storage, doors and windows. Small-diameter trees, which were used for fuel and other purposes, are carefully turned into products through the passion, knowledge, and technology of people related to the forestry industry, creating new value for this domestic timber. When used as interior building materials, it is possible to propose peaceful and comfortable interior spaces surrounded by “trees,” and at the same time contribute to Japan’s forestry industry through effective utilization of domestic timber.



(5)TOTOROP

TOTOROP is a line of fittings (e.g. doors), interior materials (e.g. flooring, walls), and furniture and fixtures (e.g. countertops), made using sturdy Sakhalin fir grown in the harsh natural environment of Hokkaido. The Japanese name for Sakhalin fir, *todomatsu*, is said to be a corruption of its Ainu name, *totorop*. Using its white-as-snow bark and small knots, it is used to add flavor to interiors to propose simple and natural-looking interior spaces.

