

# Sumitomo Forestry Group Overview

(As of July 31, 2016)

## Domestic Group Overview

### Environment and Resources Business

1	Sumitomo Forestry Wood Products Co., Ltd.	Procurement and sale of Japanese timber, management of forest, and forestry-related businesses
2	Japan Bio Energy Co., Ltd.	Intermediate processing of industrial waste products, and supply and sale of wood chips
3	Kawasaki Biomass Electric Power Co., Ltd.	Electric power generation using wood-chip biomass, wholesale of electric power
4	Okhotsk Bio Energy Co., Ltd.	Supply and sale of wood chips
5	Mombetsu Biomass Electric Power Co., Ltd.	Electric power generation using wood-chip biomass, wholesale of electric power
6	Michinoku Bio Energy Co., Ltd.	Supply and sale of wood chips
7	Hachinohe Biomass Electric Power Co., Ltd.	Electric power generation using wood-chip biomass, wholesale of electric power
8	Tomakomai Biomass Power Co., Ltd.	Electric power generation using wood-chip biomass, wholesale of electric power

### Timber and Building Materials Business

9	Sumitomo Forestry Crest Co., Ltd.	Manufacture and sale of various types of plywood, building components for housing, and adhesives, etc.
10	Sumirin Sash Co., Ltd.	Secondary processing and sale of aluminum sashes, exterior finishing
11	Sumikyo Wintec Co., Ltd.	Sale of door and window sashes for housing and low- and mid-rise buildings, and exterior finishing materials
12	Sumikyo Co., Ltd.	Secondary processing and sale of aluminum sashes, exterior finishing
13	Igeto Co., Ltd.	Sale of housing materials and equipment
14	Daiichisansho Co., Ltd.	Sale of housing materials and equipment, interior and exterior finishing
15	Nihei Co., Ltd.	Sale of housing materials and equipment, ancillary work
16	Home Eco Logistics Co., Ltd.	Distribution services for home building materials
17	Nichiha Fuji Tech Co., Ltd.	Manufacture and sale of ceramics and construction materials

### Housing Business

18	Sumitomo Forestry Home Service Co., Ltd.	Sales agent for land and housing
19	Sumitomo Forestry Residential Co., Ltd.	Management of condominiums and apartments
20	Sumitomo Forestry Home Tech Co., Ltd.	Renovation and maintenance of Sumitomo Forestry's custom-built wooden detached homes and renovation of regular detached houses, stores and offices, as well as condominiums
21	Sumitomo Forestry Landscaping Co., Ltd.	Urban greening; landscaping for private residences, plant management, procurement and sale of trees and landscape materials, plant rental, etc.
22	Sumitomo Forestry Home Engineering Co., Ltd.	Construction and construction supervision of Sumitomo Forestry's custom-built wooden detached homes
23	Sumitomo Forestry Archi Techno Co., Ltd.	Design, production support, site and foundation surveys, analysis of foundation and application for housing performance evaluation for Sumitomo Forestry's custom-built wooden detached homes
24	Meikan Honchoshu PFI Co., Ltd.	Redevelopment of headquarters, etc. of Nagoya Port Authority

### Lifestyle Services Business

25	Sumitomo Forestry Information Systems Co., Ltd.	Development of computer systems, etc.
26	Sumirin Enterprises Co., Ltd.	Various services for insurance agency, equipment leasing, office services, etc.
27	Sumirin Business Service Co., Ltd.	Staffing business, training, business contracting
28	Sumirin Agro-Products Co., Ltd.	Production and sale of nursery compost, culture soil for gardening, soil conditioning materials, fertilizer, etc.
29	Kawanokita Development Co., Ltd.	Management of the Takinomiya Country Club golf course
30	Fill Care Co., Ltd.	Management of nursing care facilities for senior citizens, etc.
31	Sumirin Wood Peace Co., Ltd.	Bed log shiitake mushroom cultivation and sale, production and processing of timber and interior products; printing

## Overseas Group Companies

### U.S.A.

1	Sumitomo Forestry America, Inc.	Oversight and participation in management of affiliated companies in U.S.A.
2	Canyon Creek Cabinet Company	Manufacture and sale of kitchen cabinets
3	Bloomfield Group Bloomfield Homes, L.P.	Construction and sale of spec homes
4	Gehan Homes Group Gehan Homes, Ltd.	Construction and sale of spec homes
5	MainVue Homes Group MainVue Homes LLC	Construction and sale of spec homes
6	Dan Ryan Builders Group DRB Enterprises, LLC	Construction and sale of spec homes

### Australia

7	Sumitomo Forestry Australia Pty Ltd.	Oversight and participation in management of affiliated companies in Australia
8	Alpine MDF Industries Pty Ltd.	Manufacture and sale of medium density fiberboard (MDF)
9	Henley Group Henley Arch Pty Ltd. (Henley Arch Unit Trust)	Construction and sale of custom-built homes and spec homes
10	Wisdom Group Wisdom Properties Group Pty Ltd.	Construction and sale of custom-built homes and spec homes

### New Zealand

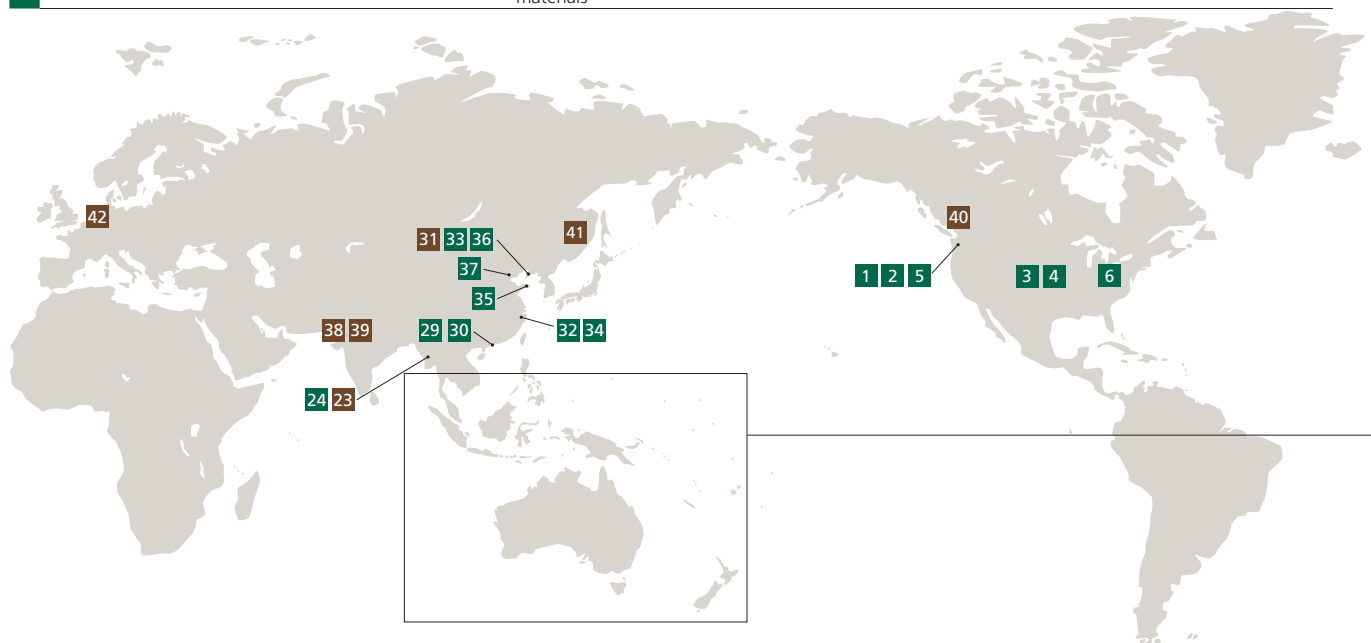
11	Sumitomo Forestry NZ Ltd.	Management of affiliated companies in New Zealand
12	Nelson Pine Industries Ltd.	Manufacture and sale of medium density fiberboard (MDF), veneer and laminated veneer lumber (LVL)
13	Tasman Pine Forests Ltd.	Large-scale forestation

### Papua New Guinea

14	Open Bay Timber Ltd.	Large-scale forestation
----	----------------------	-------------------------

### Indonesia

15	PT. Sumitomo Forestry Indonesia	Import/export and wholesale of timber and building materials, etc.
16	PT. Mayangkara Tanaman Industri	Large-scale forestation
17	PT. Wana Subur Lestari	Large-scale forestation
18	PT. Kutai Timber Indonesia	Manufacture and sales of plywood, secondary processed plywood, processed timber products and particle board
19	PT. Rimba Partikel Indonesia	Manufacture and sale of particle board
20	PT. Sinar Rimba Pasifik	Manufacture and sale of wooden interior products
21	PT. AST Indonesia	Manufacture and sale of materials for musical instruments, speaker materials and wooden building materials



Singapore

22	Sumitomo Forestry (Singapore) Ltd.	Import/export and wholesale of timber and building materials; oversight and participation in management of affiliates in Asia
----	------------------------------------	---

Myanmar

23	Sumitomo Forestry (Singapore) Ltd. Yangon Branch	Import/export and wholesale of timber and building materials, collect information of overseas locations
24	MOS Lumber Products Co., Ltd.	Manufacture and sale of processed timber products

Thailand

25	SF Holdings (Thailand) Co., Ltd.	Management of affiliated companies in Thailand
26	PAN ASIA PACKING LTD.	Procurement and sale of wooden packaging materials and wood products

Vietnam

27	Sumitomo Forestry (Vietnam) Co., Ltd.	Import/export and wholesale of timber and building materials
28	Vina Eco Board Co., Ltd.	Manufacture and sale of particle board

Hong Kong

29	住林香港有限公司 SUMIRIN HONG KONG LIMITED	Management of affiliated companies in Hong Kong
30	怡峰控股有限公司 Rainbow Alpha Holdings Limited	Development of condominium complexes

China

31	住友林業(大連)商貿有限公司 Sumitomo Forestry (Dalian) Ltd.	Import/export and wholesale of timber and building materials
32	住友林業(上海)商貿有限公司 Sumitomo Forestry (Shanghai) Ltd.	Import/export and wholesale of timber and building materials, supervision of housing business in China
33	派爾剛聯合木製品(大連)有限公司 Paragon Wood Product (Dalian) Co., Ltd.	Design and construction of wooden housing; interior design and construction of housing and offices
34	派爾剛木製品(上海)有限公司 Paragon Wood Product (Shanghai) Co., Ltd.	Interior design and construction of housing and offices; manufacturing, processing and sale of trusses
35	煙台海外金橋房屋租賃有限公司 Yantai Golden Bridge Enterprise Co., Ltd.	Brokerage of rental housing
36	大連住林信息技術服務有限公司 Dalian Sumirin Information Technology Service Co., Ltd.	Contracted CAD work and other business processing
37	北京金隅裝飾工程有限公司 Beijing BBMG Decoration Engineering Co., Ltd	Interior design and construction of housing and offices

India

38	Sumitomo Forestry India Pvt. Ltd.	Import/export and wholesale of timber and building materials, etc.
39	Spacewood Furnishers Pvt. Ltd.	Manufacture and sale of wooden interior products

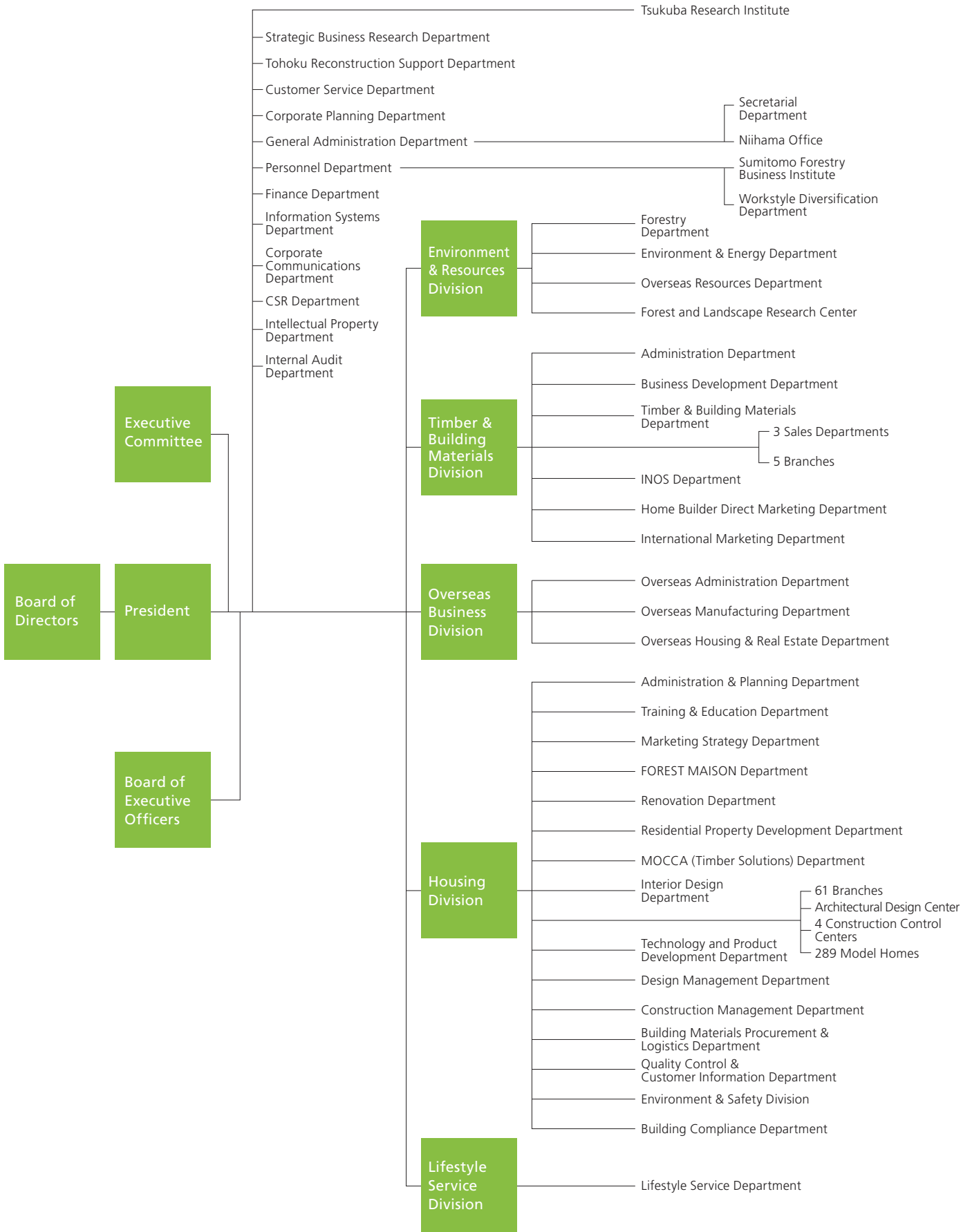


- Overseas Offices**
- 40 Vancouver Office
  - 41 Khabarovsk Office
  - 42 Amsterdam Office
  - 43 Kota Kinabalu Office

- Overseas Business
- Timber and Building Materials Business
- Other Businesses

# Organization Chart

(As of April 1, 2016)



# Investor Information

## Company Outline (As of March 31, 2016)

Company Name	Sumitomo Forestry Co., Ltd.
Founded	1691
Incorporated	1948
Paid-in Capital	¥27,672 million
Stock Exchange Listing	Tokyo
Total Number of Authorized Shares	400,000,000
Total Number of Shares Issued	177,410,239
Ordinary Shareholders' Meeting	June
Number of Shareholders	10,481
Head Office	Keidanren Kaikan, 3-2, Otemachi 1-chome, Chiyoda-ku, Tokyo 100-8270, Japan
Consolidated Subsidiaries	84 (Overseas 54)
Affiliated Companies	26 (Overseas 22)
Number of Employees (Consolidated)	17,001
Homepage	<a href="http://sfc.jp/english/">http://sfc.jp/english/</a>
Independent Auditors	Ernst & Young ShinNihon LLC
Contact Information	Sumitomo Forestry Co., Ltd. Corporate Communications Department IR Team Tel : 81-3-3214-2270 Fax: 81-3-3214-2272

\*Stock Price and Trading Volume

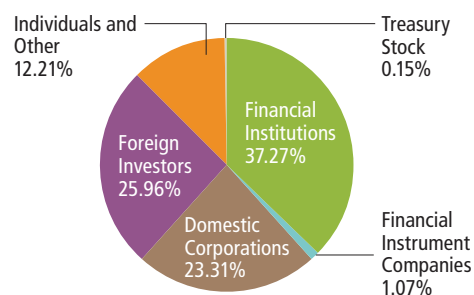
## Major Shareholders (As of March 31, 2016)

Shareholders	Number of shares held (Thousand shares)	Shareholding ratio (%)
Sumitomo Metal Mining Co., Ltd.	10,110	5.7
The Master Trust Bank of Japan, Ltd. (trust account)	9,416	5.3
Japan Trustee Service Bank, Ltd. (trust account)	6,402	3.6
The Iyo Bank, Ltd.	5,849	3.3
Sumitomo Corporation	4,383	2.4
Sumitomo Life Insurance Company	4,227	2.3
The Hyakujushi Bank, Ltd.	4,197	2.3
Sumitomo Mitsui Banking Corporation	4,136	2.3
Sumitomo Mitsui Trust Bank, Ltd.	3,408	1.9
Japan Trustee Service Bank, Ltd. (trust account 9)	3,296	1.8

\* Rounded down to the nearest thousand.

\* The shareholding ratio is calculated by subtracting treasury stock from the total number of outstanding shares.

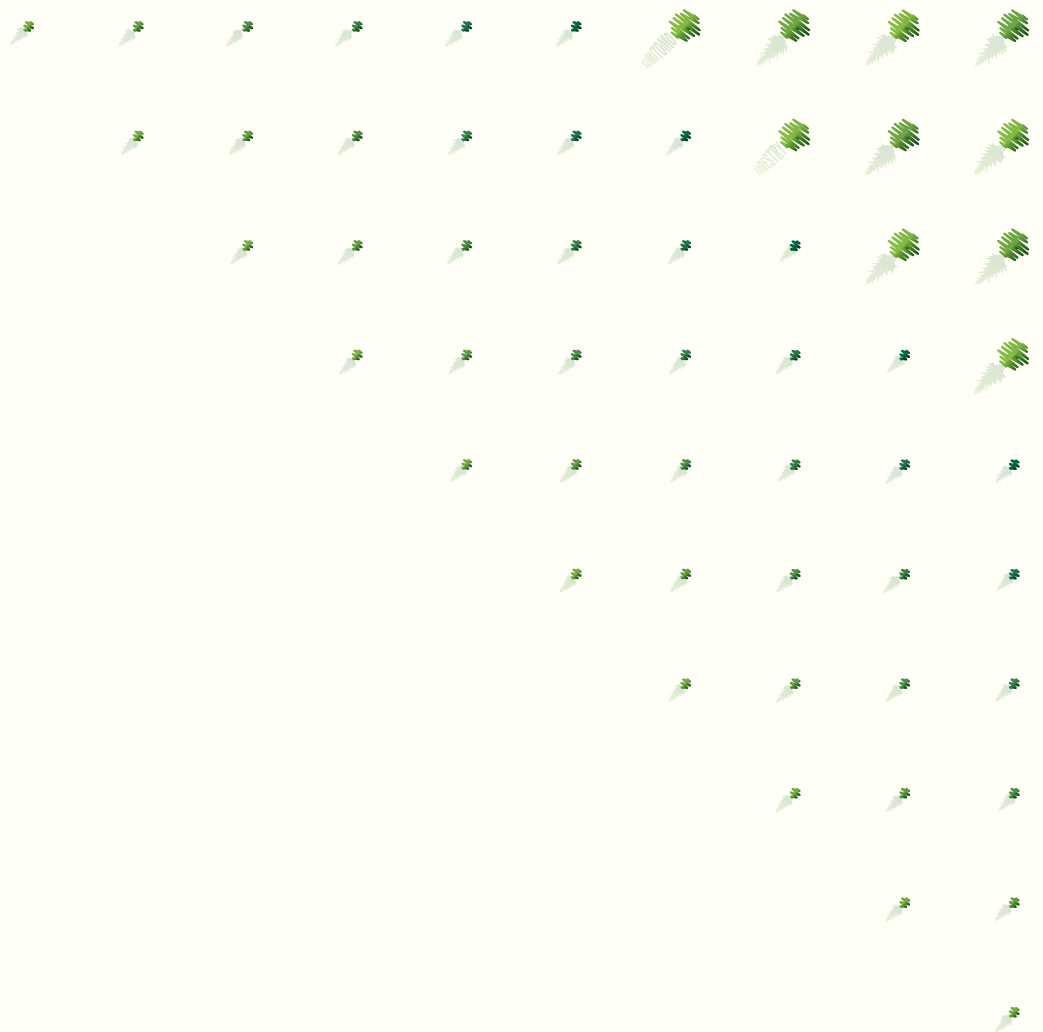
## Breakdown of Shareholders (As of March 31, 2016)



## Stock Price and Trading Volume



Note: Following the integration of the Osaka Securities Exchange into the Tokyo Stock Exchange on July 16, 2013, the above graph uses the stock price of the Tokyo Stock Exchange, and the combined trading volumes of the Osaka Securities Exchange and the Tokyo Stock Exchange before the integration.



 **SUMITOMO FORESTRY CO.,LTD.**

Corporate Communications Department IR Team  
Keidanren Kaikan, 3-2, Otemachi 1-chome,  
Chiyoda-ku, Tokyo 100-8270, Japan  
Tel: 81-3-3214-2270 Fax: 81-3-3214-2272  
URL: <http://sfc.jp/english/>