

Sumitomo Forestry Group at a Glance

(As of May 30, 2014)

Domestic

Timber and Building Materials Business Segment

1 Sumitomo Forestry Wood Products Co., Ltd.	Forest management; various forestry businesses; procurement and sales of Japanese timber, etc.
2 Sumitomo Forestry Crest Co., Ltd.	Manufacture and sales of various types of plywood, building components for housing, furniture, etc.
3 Sumirin Sash Co., Ltd.	Secondary processing and sales of aluminum sashes; exterior finishing
4 Sumikyo Wintec Co., Ltd.	Sales of door and window sashes for housing and low- and mid-rise buildings; sales of exterior finishing materials
5 Sumikyo Co., Ltd.	Sales of door and window sashes for housing; sales and installation of sidings; sales of exterior finishing materials
6 Igeto Co., Ltd.	Sales of housing materials and equipment
7 Daiichisansho Co., Ltd.	Sales of construction materials; interior and exterior finishing
8 Nihei Co., Ltd.	Sales of construction materials; ancillary work
9 Home Eco Logistics Co., Ltd.	Distribution services for home building materials
10 Nichiha Fuji Tech Co., Ltd.	Manufacture and sales of construction materials
11 TOCLAS CORPORATION	Manufacture and sales of housing equipment

Housing Business Segment

12 Sumitomo Forestry Home Service Co., Ltd.	Sales agent for land and housing
13 Sumitomo Forestry Residential Co., Ltd.	Management of condominiums and apartments
14 Sumitomo Forestry Home Tech Co., Ltd.	Renovation and maintenance of Sumitomo Forestry's custom-built wooden detached homes and renovation of regular detached houses, as well as condominiums
15 Sumitomo Forestry Landscaping Co., Ltd.	Urban greening; landscaping for private residences; plant rental, etc.
16 Sumitomo Forestry Home Engineering Co., Ltd.	Construction and construction supervision of Sumitomo Forestry's custom-built wooden detached homes
17 Sumitomo Forestry Archi Techno Co., Ltd.	CAD and CAM work, site surveys, analysis of foundation and application for housing performance evaluation for Sumitomo Forestry's custom-built wooden detached homes
18 Meikan Honchosha PFI Co., Ltd.	Redevelopment of headquarters, etc. of Nagoya Port Authority

Other Businesses Segment

19 Sumitomo Forestry Information Systems Co., Ltd.	Development of computer systems, etc.
20 Sumirin Enterprises Co., Ltd.	Various services for insurance agency, equipment leasing, office services (central purchasing and business contracting), etc.
21 Sumirin Business Service Co., Ltd.	Staffing business, training, business contracting
22 Sumirin Agro-Products Co., Ltd.	Production and sales of nursery compost, culture soil for gardening, soil conditioning materials, fertilizer, etc.
23 Kawanokita Development Co., Ltd.	Management of the Takinomiya Country Club golf course
24 Fill Care Co., Ltd.	Management of nursing care facilities for senior citizens, etc.
25 JAPAN BIO ENERGY HOLDING CORPORATION	Management direction and holding of shares in wood chip supply companies
26 Japan Bio Energy Co., Ltd.	Intermediate processing of industrial waste products, and supply and sales of wood chips
27 Kawasaki Biomass Electric Power Co., Ltd.	Electric power generation using wood-chip biomass; wholesale electric power
28 Okhotsk Bio Energy Co., Ltd.	Supply and sales of wood chips
29 Mombetsu Biomass Electric Power Co., Ltd.	Electric power generation using wood-chip biomass; wholesale electric power

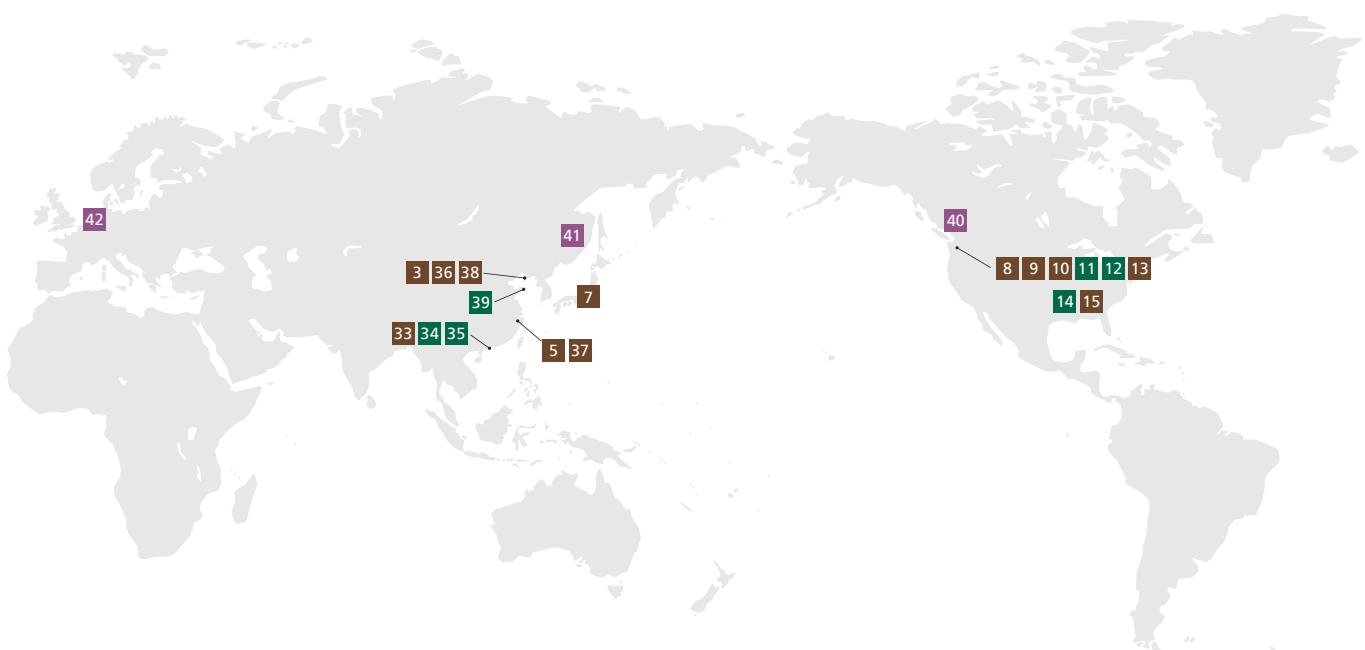
Overseas

Timber and Building Materials Business Segment

1	Shouei Furniture Co., Ltd. (Thailand)	Manufacture and sales of furniture
2	PT. Sumitomo Forestry Indonesia (Indonesia)	Import / export and wholesale of timber and building materials, etc.
3	Sumitomo Forestry (Dalian) Ltd. (China)	Import / export and wholesale of timber and building materials, etc.
4	Sumitomo Forestry (Singapore) Ltd. (Singapore)	Procurement and sales of timber and building materials, etc.; investment and financing
5	Sumitomo Forestry (Shanghai) Ltd. (China)	Import / export and wholesale of timber and building materials, etc.; management of housing business in China
6	Sumitomo Forestry (Vietnam) Co., Ltd. (Vietnam)	Import / export and wholesale of timber and building materials, etc.

Overseas Business Segment

7	Kowa Lumber Co., Ltd. (Japan)	Import / export and sales of logs; export of forestry equipment and equipment parts
8	Sumitomo Forestry America, Inc. (U.S.A.)	Oversight and participation in management of affiliates in U.S.A.
9	SFC Homes LLC (U.S.A.)	Construction and sales of detached wooden homes
10	Canyon Creek Cabinet Company (U.S.A.)	Manufacture and sales of kitchen cabinets
11	Cascadia Resort Communities LLC (U.S.A.)	Land development, housing business
12	Creekstone Development LLC (U.S.A.)	Land development and sales of housing lots
13	Henley USA LLC (U.S.A.)	Construction and sales of detached wooden homes
14	Bloomfield Homes, L.P. (U.S.A.)	Construction and sales of detached wooden homes
15	Gehan Homes, Ltd. (U.S.A.)	Construction and sales of detached wooden homes
16	Sumitomo Forestry Australia Pty Ltd. (Australia)	Oversight and participation in management of affiliates in Australia
17	Alpine MDF Industries Pty Ltd. (Australia)	Manufacture and sales of medium density fiberboard (MDF)
18	Grices Road Management Pty Ltd. (Australia)	Land development
19	SPJR Land Developments Pty Ltd. (Australia)	Holding company of land development company
20	Henley Arch Unit Trust (Australia)	Construction and sales of custom-built detached wooden homes and detached spec homes



21	Henley Arch Pty Ltd. (Australia)	Construction and sales of custom-built detached wooden homes and detached spec homes
22	Edgewater Homes Pty Ltd. (Australia)	Construction and sales of detached wooden homes and collective housing
23	Sumitomo Forestry NZ Ltd. (New Zealand)	Information gathering in Oceania
24	Nelson Pine Industries Ltd. (New Zealand)	Manufacture and sales of medium density fiberboard (MDF), veneer and laminated veneer lumber (LVL)
25	Open Bay Timber Ltd. (Papua New Guinea)	Large-scale afforestation; log harvesting and export
26	PT. Mayangkara Tanaman Industri (Indonesia)	Large-scale afforestation; log harvesting
27	PT. Wana Subur Lestari (Indonesia)	Large-scale afforestation; log harvesting
28	PT. Kutai Timber Indonesia (Indonesia)	Manufacture and sales of plywood, secondary processed plywood, processed timber products and particle board
29	PT. Rimba Partikel Indonesia (Indonesia)	Manufacture and sales of particle board
30	PT. Sinar Rimba Pasifik (Indonesia)	Manufacture and sales of wooden interior products
31	PT. AST Indonesia (Indonesia)	Manufacture and sales of materials for musical instruments and wooden building materials
32	Vina Eco Board Co., Ltd. (Vietnam)	Manufacture and sales of particle board
33	SUMIRIN HONG KONG LIMITED (Hong Kong)	Oversight and participation in management of affiliate in Hong Kong
34	Partner Ally Limited (Hong Kong)	Information gathering in Hong Kong and China
35	Rainbow Alpha Holdings Limited (Hong Kong)	Complex condominium development
36	Paragon Wood Product (Dalian) Co., Ltd. (China)	Design and construction of wooden housing; interior design and construction of housing and offices
37	Paragon Wood Product (Shanghai) Co., Ltd. (China)	Interior design and construction of housing and office; manufacturing, processing and sales of trusses
38	Dalian Sumirin Information Technology Service Co., Ltd. (China)	CAD work and other business processing

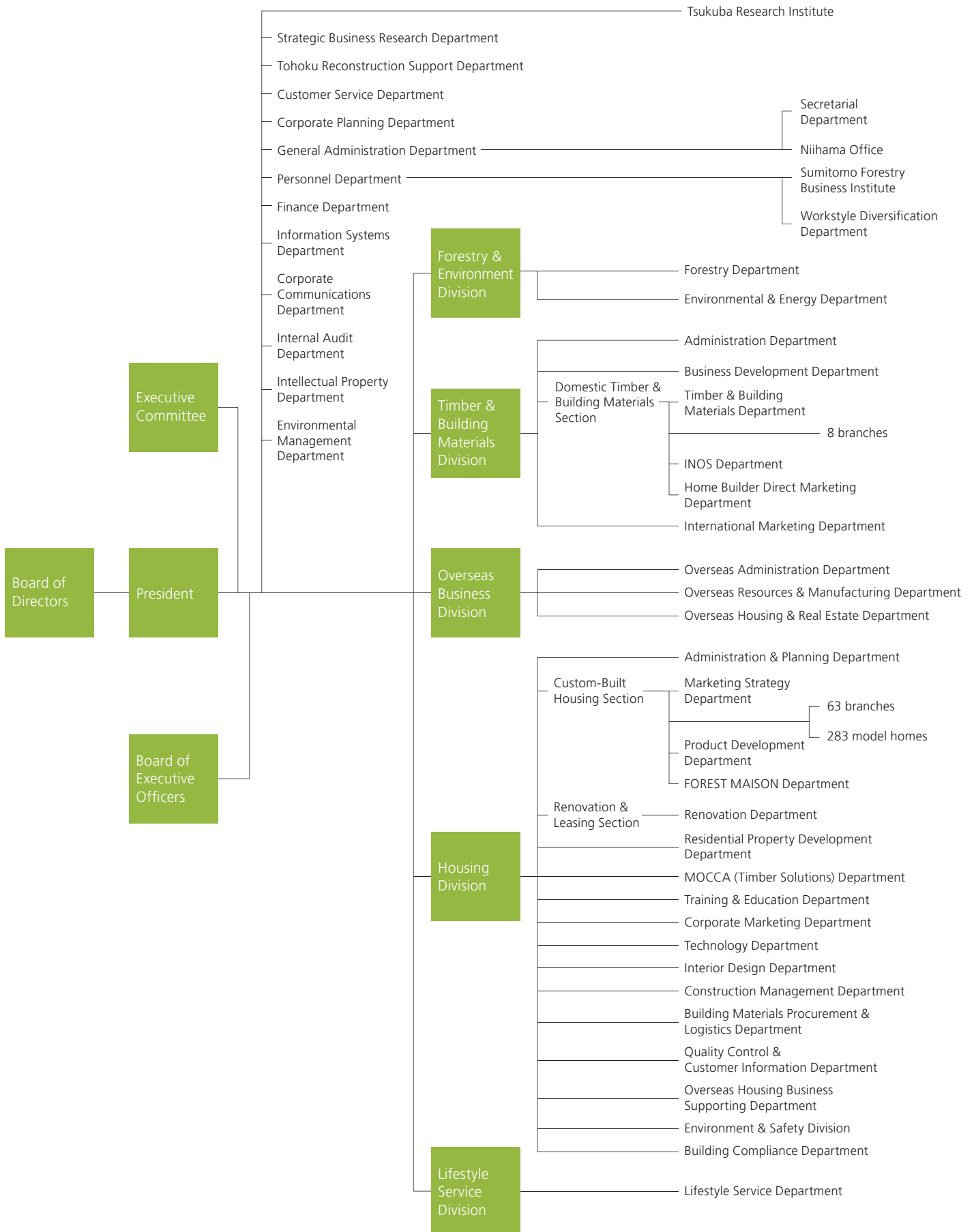
Housing Business Segment

39	Yantai Golden Bridge Enterprise Co., Ltd. (China)	Brokerage of rental housing
----	---	-----------------------------



Organization Chart

(As of April 1, 2014)



Investor Information

Company Outline (As of March 31, 2014)

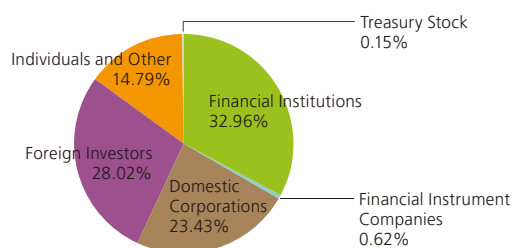
Company Name	Sumitomo Forestry Co., Ltd.
Founded	1691
Incorporated	1948
Paid-in Capital	¥27,672 million
Stock Exchange Listing	Tokyo
Total Number of Authorized Shares	400,000,000
Total Number of Shares Issued	177,410,239
Ordinary Shareholders' Meeting	June
Number of Shareholders	12,596
Head Office	Keidanren Kaikan, 3-2, Otemachi 1-chome, Chiyoda-ku, Tokyo 100-8270, Japan
Consolidated Subsidiaries	58 (Overseas 31)
Associated Companies	17 (Overseas 14)
Number of Employees (Consolidated)	17,413
Homepage	http://sfc.jp/english/
Independent Auditors	Ernst & Young ShinNihon LLC
Contact Information	Sumitomo Forestry Co., Ltd. Corporate Communications Department IR Team Tel : 81-3-3214-2270 Fax: 81-3-3214-2272

Major Shareholders (As of March 31, 2014)

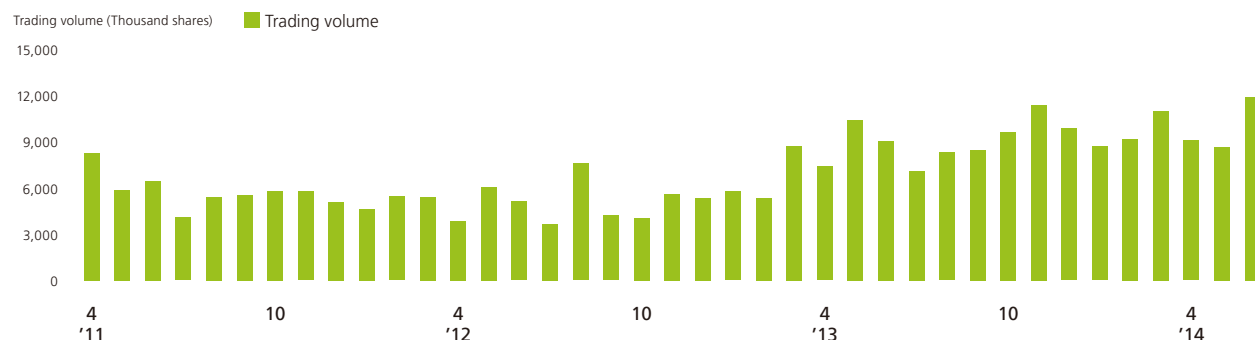
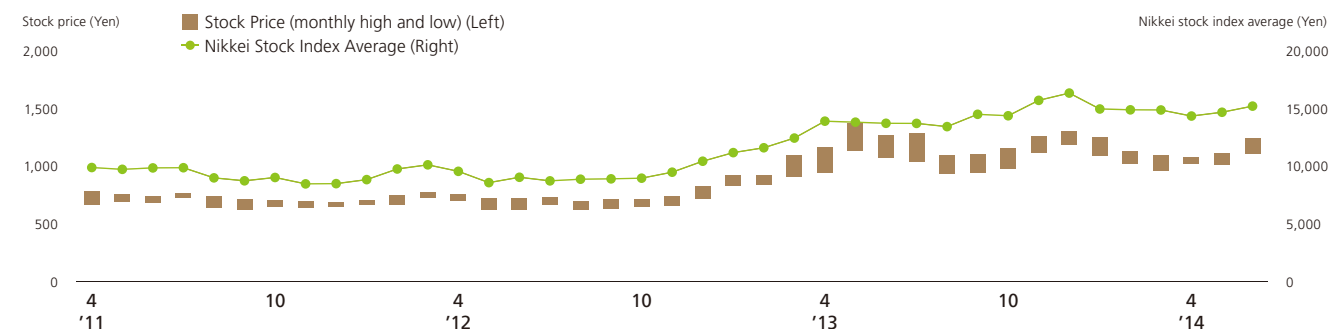
Shareholders	Number of shares held (Thousand shares)	Shareholding ratio (%)
Sumitomo Metal Mining Co., Ltd.	10,110	5.69
The Master Trust Bank of Japan, Ltd. (trust account)	7,906	4.45
The Iyo Bank, Ltd.	5,849	3.29
Sumitomo Corporation	4,383	2.47
NORTHERN TRUST CO.(AVFC)SUB A/C NON TREATY	4,329	2.44
Sumitomo Life Insurance Company	4,227	2.38
Japan Trustee Services Bank, Ltd. (trust account)	4,214	2.37
The Hyakujushi Bank, Ltd.	4,197	2.36
Sumitomo Mitsui Banking Corporation	4,136	2.33
Sumitomo Mitsui Trust Bank, Limited	3,408	1.92

* Number of shares held less than 1 thousand shares have been omitted.

Breakdown of Shareholders (As of March 31, 2014)



Stock Price and Trading Volume



* Note: Following the integration of the Osaka Securities Exchange into the Tokyo Stock Exchange in July 16, 2013, the above graph uses the stock price of the Osaka Securities Exchange, and the combined trading volumes of the Osaka Securities Exchange and the Tokyo Stock Exchange before the integration.



 **SUMITOMO FORESTRY CO.,LTD.**

Corporate Communications Department IR team
Keidanren Kaikan, 3-2, Otemachi 1-chome,
Chiyoda-ku, Tokyo 100-8270, Japan
Tel: 81-3-3214-2270 Fax: 81-3-3214-2272
URL: <http://sfc.jp/english/>