

OVERSEAS NETWORK

OVERSEAS OFFICES AND SUBSIDIARIES

1 Seattle Office Sumitomo Forestry Seattle, Inc.

1000 Second Avenue, Suite 1220, Seattle, Washington 98104, U.S.A.
Telephone: 1-206-623-8840
Facsimile: 1-206-345-0391

2 Vancouver Office

460, 1140 West Pender Street, Vancouver, British Columbia, Canada V6E 4G1
Telephone: 1-604-681-8184
Facsimile: 1-604-681-6568

3 Amsterdam Office

Rivierstaete Bldg., 3rd Floor, No. 22, Amsteldijk 166 1079LH, Amsterdam, The Netherlands
Telephone: 31-20-646-4140
Facsimile: 31-20-646-5372

4 Jakarta Office

P.O. Box 6918/JKSST, Summitmas II, 8th Floor, Jl. Jend. Sudirman Kav. 61-62, Jakarta 12190, Indonesia
Telephone: 62-21-5200268
Facsimile: 62-21-5200213

5 Singapore Office Sumitomo Forestry (Singapore) Ltd./ Sumitomo Forestry Investment Ltd.

6 Raffles Quay #14-04/05 John Hancock Tower Singapore 048580
Telephone: 65-435-0150
Facsimile: 65-435-0151

6 Dalian Office

Senmao Building, 13th Floor, 147 Zhongshan Road, Xigang District Dalian, 116011, PRC
Telephone: 86-411-367-8060
Facsimile: 86-411-367-8061

7 Khabarovsk Office

"PARUS HOTEL" 208, 5, Shevchenko Street, Khabarovsk 680000, Russia
Telephone: 7-4212-32-68-58
Facsimile: 7-4212-32-83-61

8 Tawau Office

P.O. Box 946, 91008, Tawau, Sabah, Malaysia
Telephone: 60-89-772979
Facsimile: 60-89-761060

9 Kota Kinabalu Office

Lot 1-5-E4, 5th Floor, Centre Point Sabah, No. 1, Jalan Centre Point, 88000 Kota Kinabalu, Sabah, Malaysia
Telephone: 60-88-242031
Facsimile: 60-88-268031

10 Miri Office

P.O. Box 493, 98007, Lot 231 No.15, Hokkien Road, Miri, Sarawak, Malaysia
Telephone: 60-85-413459
Facsimile: 60-85-413598

11 Sibiu Office

P.O. Box 1563, 96008, No. 52, 2nd Floor, Tanahmas Bldg., Kg. Nyabor, Sibiu, Sarawak, Malaysia
Telephone: 60-84-312777
Facsimile: 60-84-317635

12 Kuching Office

P.O. Box A727, Kenyalang Park 93814, 2nd Floor, Residential Sublot 2, Lot 289, Sec. 49, Jalan Abell, 93100, Kuching, Sarawak, Malaysia
Telephone: 60-82-410510
Facsimile: 60-82-427927

13 Port Moresby Office

P.O. Box 1113, Era Dorina Complex Unit 3, Sec. 34, Lot 6, Elamakana Street, Port Moresby, Papua New Guinea
Telephone: 675-321-2328
Facsimile: 675-321-2327

14 Auckland Office

Sumitomo Forestry NZ Limited
P.O. Box 91219, Auckland Mail Centre, Level 11, Westpac Tower, 120 Albert Street, Auckland, New Zealand
Telephone: 64-9-309-0012
Facsimile: 64-9-309-0014

15 Nelson Pine Industries Limited

P.O. Box 3049, Lower Queen Street, Richmond, Nelson, New Zealand
Telephone: 64-3543-8800
Facsimile: 64-3543-8890

AFFILIATED COMPANIES

16 P.T. Kutai Timber Indonesia

P.O. Box 6913/JKSST, Summitmas II, 8th Floor, Jl. Jend. Sudirman Kav. 61-62, Jakarta 12069, Indonesia
Telephone: 62-21-2521260
Facsimile: 62-21-5200213/5202069

17 Plywood Factory Probolinggo

P.O. Box 101, Probolinggo, Jl. Tanjung Tembaga Baru, Probolinggo, Jawa Timur, Indonesia
Telephone: 62-335-42-2412
Facsimile: 62-335-42-1669

18 Surabaya Office

P.O. Box 306, Surabaya, Jl. Kusuma Bangsa No. 19, Surabaya, Jawa Timur, Indonesia
Telephone: 62-31-5343835
Facsimile: 62-31-5343838

19 Samarinda Office

JL. Basuki Rahmat II, No. 04 RT.V Kelurahan Timur, Indonesia
Telephone: 62-541-741966/737926
Facsimile: 62-541-741967

20 Sebulu Laboratory

Sebul-Kalimantan Timur, Kalimantan Timur, Indonesia
Telephone: 62-541-737436
Facsimile: 62-541-205516

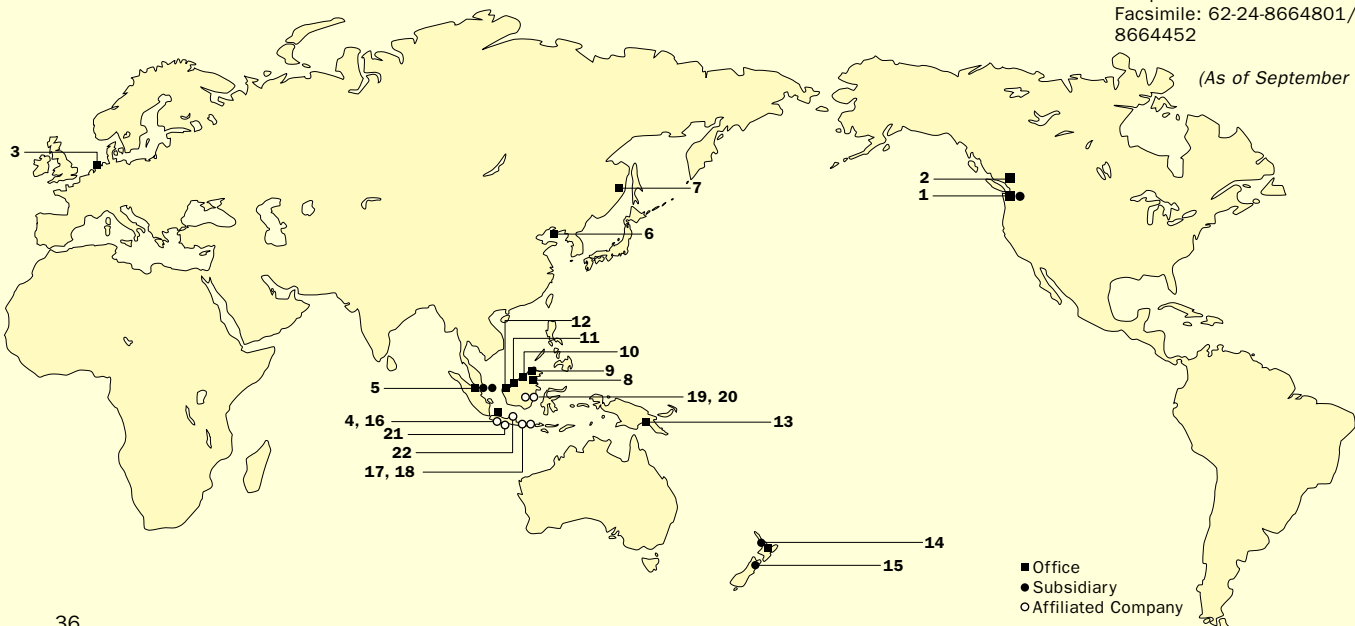
21 P.T. Rimba Partikel Indonesia

Desa. Mororejo, Kaliwungu, Kendal, Jawa Tengah, Indonesia
Telephone: 62-24-8662990
Facsimile: 62-24-8662988/8662993

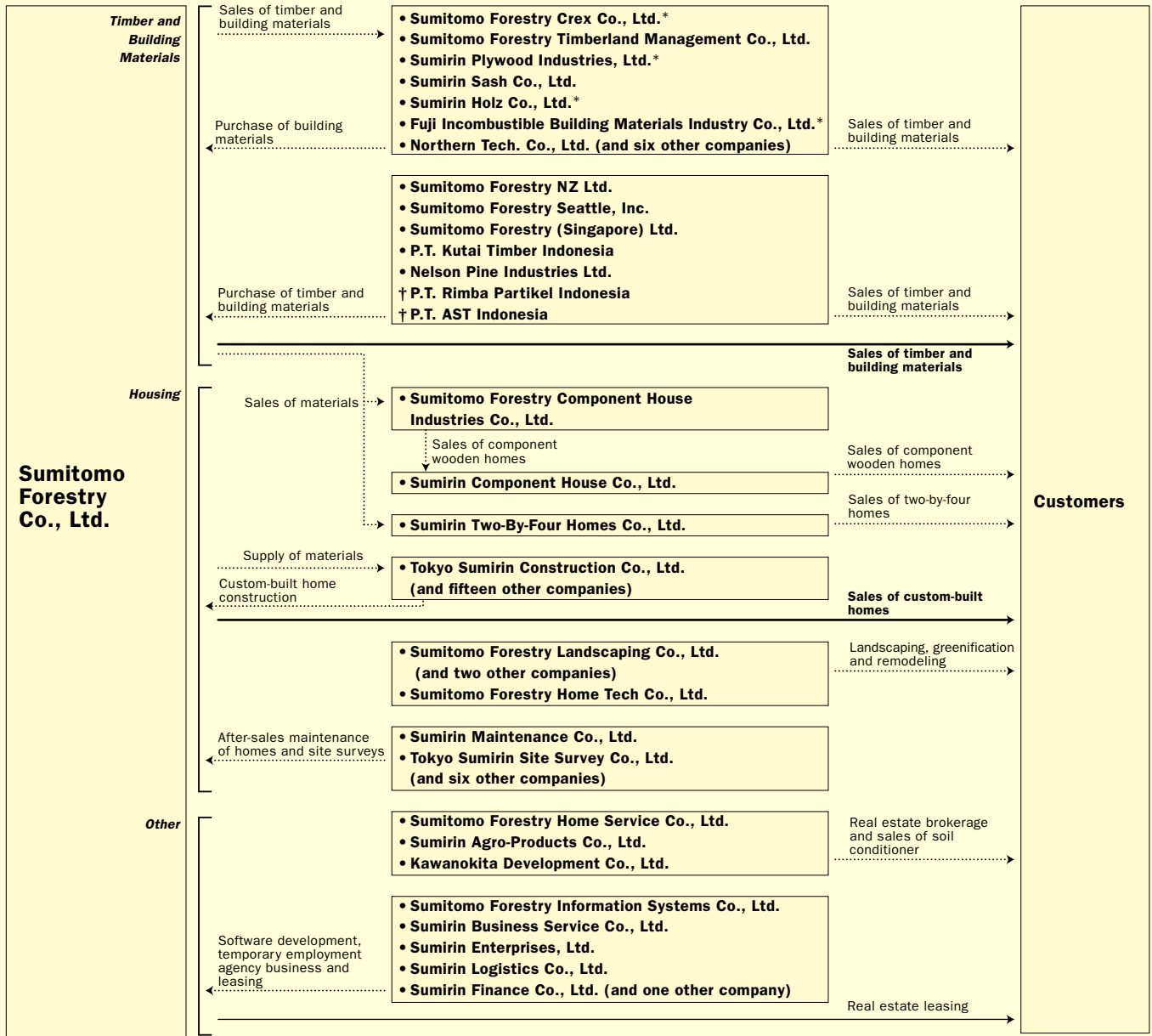
22 P.T. AST Indonesia

JL. Raya Semarang kendal, KM12-Kawasan Berikat, KITW Techno Park Blok A-01, Semarang, Indonesia
Telephone: 62-24-8664800
Facsimile: 62-24-8664801/8664452

(As of September 1, 2001)



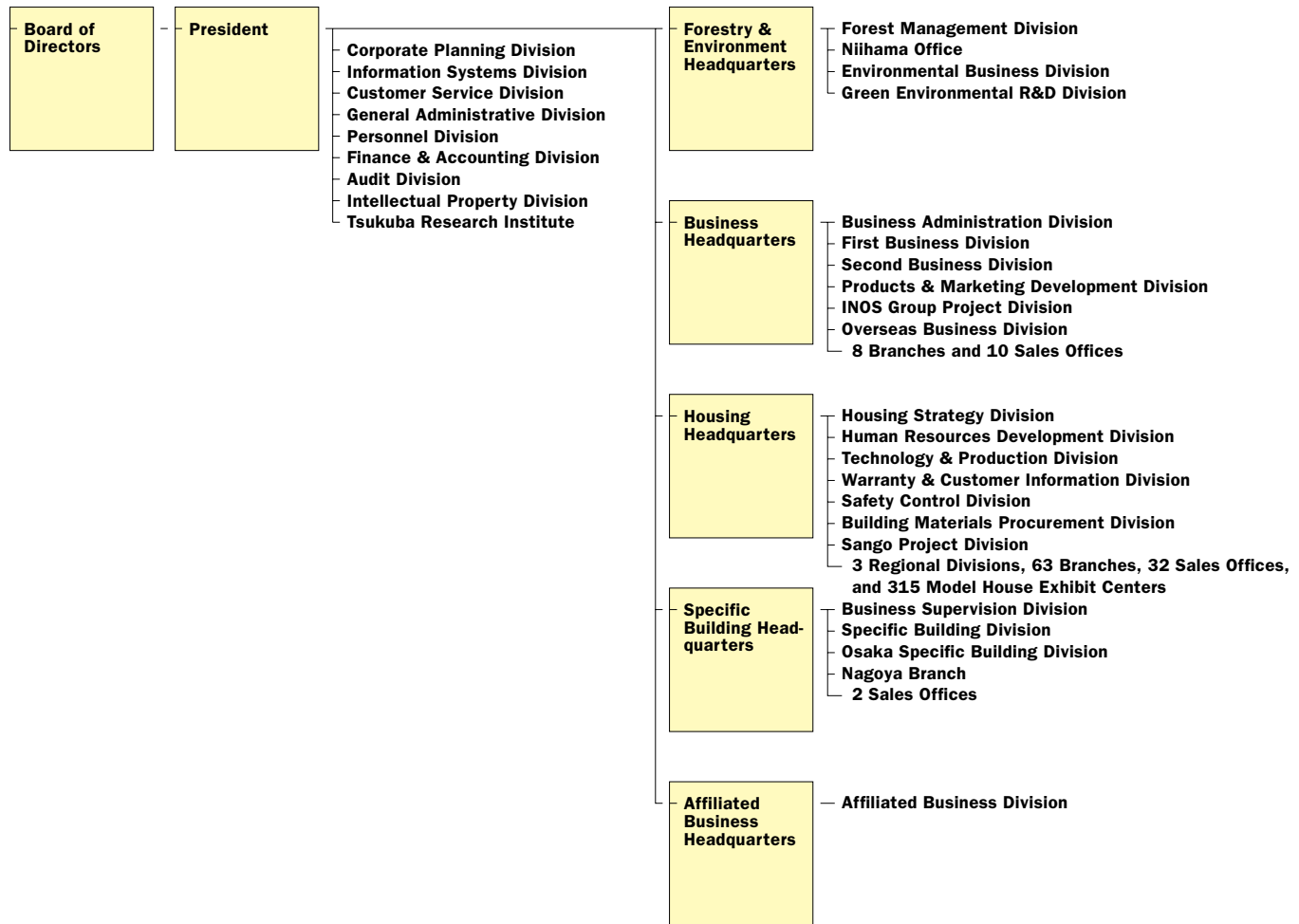
SUBSIDIARIES AND AFFILIATES



• Consolidated Subsidiary
 † Equity-method Affiliate
 * Merged in April 2001 to form new subsidiary Sumitomo Forestry Crest Co., Ltd.

(As of March 31, 2001)

ORGANIZATION CHART



(As of April 1, 2001)

CORPORATE DATA

Founded

1691

Incorporated

1948

Stock Exchange Listings

Tokyo, Osaka

Paid-in Capital

¥27,672 million

Head Offices

Tokyo

Shinjuku Green Tower Bldg.,
14-1, Nishi-Shinjuku 6-chome,
Shinjuku-ku, Tokyo 160-8360,
Japan

Telephone:

First Business Division

81-3-5322-6700

Overseas Business Division

81-3-5322-6680

General Administrative Division

81-3-5322-6666

Facsimile:

81-3-5322-6800/6780/6766

URL: <http://www.sfc.co.jp/>

Osaka

Sumitomo Building No. 2, 7-28,
Kitahama 4-chome, Chuo-ku,
Osaka 541-0041, Japan
Telephone: 81-6-6220-8600
Facsimile: 81-6-6220-8612

Number of Shareholders

14,359

(As of March 31, 2001)

BOARD OF DIRECTORS



*(Front, from left) Yukihiro Goto, Ryu Yano
(Back, from left) Yoshinori Motobayashi, Kanji Sugano*

President/Director

Ryu Yano*

Senior Managing Directors

Yukihiro Goto*

Kanji Sugano*

Yoshinori Motobayashi*

Managing Directors

Masaki Mashita

Yoshihiro Kado

Akihiro Ueda

Nobuo Suzuki

Advisor/Director

Hiroto Yamaguchi

Directors

Junji Ikai

Shuji Kitamura

Joji Itoh

Kazuo Kai

Hideo Kanai

Masayuki Kato

Shoichi Takahashi

Kazushige Yahagi

Ryuichi Takayama

Statutory Auditors

Masahiro Kawachi

Toshio Inoue

Hiroshi Miki

Satohiko Sasaki

**Representative Director*

(As of June 28, 2001)

Head Office (Tokyo)

Shinjuku Green Tower Bldg.,
14-1, Nishi-Shinjuku 6-chome,
Shinjuku-ku, Tokyo 160-8360, Japan
Tel: 81-3-5322-6666
Fax: 81-3-5322-6766

Head Office (Osaka)

Sumitomo Building No. 2,
7-28, Kitahama 4-chome,
Chuo-ku, Osaka 541-0041, Japan
Tel: 81-6-6220-8600
Fax: 81-6-6220-8612

URL: <http://www.sfc.co.jp/>