

OVERSEAS NETWORK

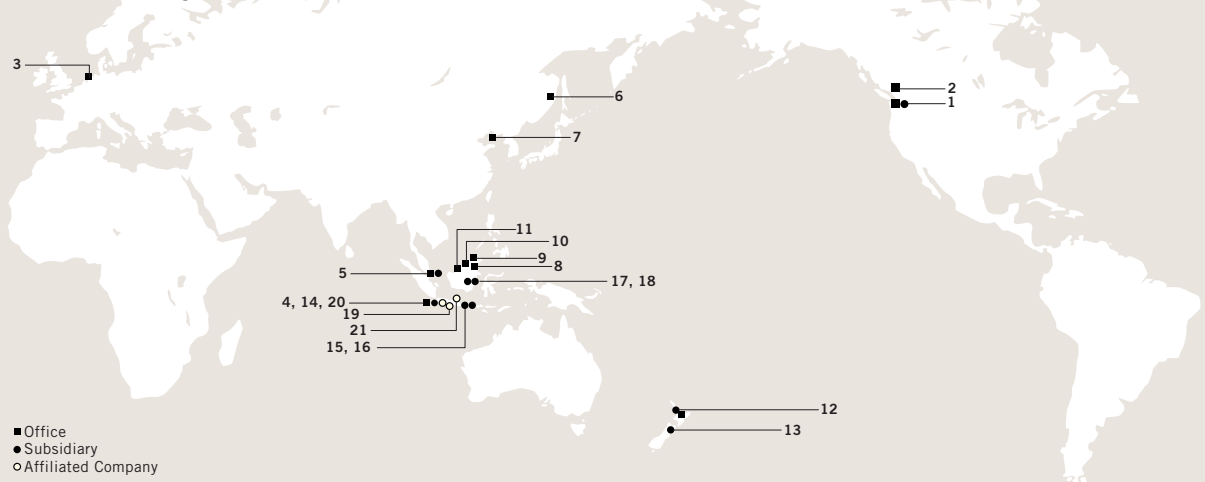
OVERSEAS OFFICES AND SUBSIDIARIES

- 1 Seattle Office/
Sumitomo Forestry Seattle, Inc.**
1000 Second Avenue, Suite 1220, Seattle, Washington 98104, U.S.A.
Tel: 1-206-623-8840
Fax: 1-206-345-0391
E-mail: sfc@hitmark.com
- 2 Vancouver Office**
460, 1140 West Pender Street, Vancouver, British Columbia, Canada, V6E 4G1
Tel: 1-604-681-8184
Fax: 1-604-681-6568
E-mail: sfc@sfcvcr.com
- 3 Amsterdam Office**
Rivierstaete Building, 3rd Floor No. 22, Amsteldijk 166 1079LH, Amsterdam, The Netherlands
Tel: 31-20-646-4140
Fax: 31-20-646-5372
E-mail: sfc3@smtforams.nl
- 4 Jakarta Office**
Summitas II, 8th Floor, JL. Jend. Sudirman Kav. 61-62, Jakarta 12190, Indonesia
Tel: 62-21-5200268
Fax: 62-21-5202069
E-mail: sfcjkt@cbn.net.id
- 5 Singapore Office/
Sumitomo Forestry (Singapore) Ltd.**
6 Raffles Quay #14-04/05, John Hancock Tower. Singapore 048580
Tel: 65-6435-0150
Fax: 65-6435-0151
E-mail: adm@sfsapore.com.sg
- 6 Khabarovsk Office**
"PARUS HOTEL" 208, 5, Shevchenko Street, Khabarovsk 680000, Russia
Tel: 7-4212-32-68-58
Fax: 7-4212-32-83-61
E-mail: sfc@inter.global-one.ru
- 7 Dalian Office**
Senmao Building, 13th Floor, 147 Zhongshan Road, Xigang District Dalian, 116011, PRC
Tel: 86-411-367-8060/8062
Fax: 86-411-367-8061
E-mail: sfcdl@online.ln.cn
- 8 Tawau Office**
P.O. Box 946, 91008, Tawau, Sabah, Malaysia
Tel: 60-89-772979
Fax: 60-89-761060
- 9 Kota Kinabalu Office**
Lot 1-5-E4, 5th Floor, Centre Point Sabah, No. 1, Jalan Centre Point, 88000, Kota Kinabalu, Sabah, Malaysia
Tel: 60-88-242031
Fax: 60-88-268031
E-mail: sfcwu@tm.net.my
- 10 Miri Office**
P.O. Box. 493, 98007, Lot 231 No.15, Hokkien Road, Miri, Sarawak, Malaysia
Tel: 60-85-413459
Fax: 60-85-413598
E-mail: sfcmiri@tm.net.my
- 11 Sibul Office**
P.O. Box. 1563, 96008, No. 52, 2nd Floor, Tanahmas Building, Kg. Nyabor, Sibul, Sarawak, Malaysia
Tel: 60-84-312777
Fax: 60-84-317635
- 12 Auckland Office/
Sumitomo Forestry NZ Limited**
P.O. Box. 91219, Auckland Mail Centre, Level 11, Westpac Tower, 120 Albert Street, Auckland, New Zealand
Tel: 64-9-309-0012
Fax: 64-9-309-0014
E-mail: sfnz@xtra.co.nz/
sumitomo@xtra.co.nz
- 13 Nelson Pine Industries Limited**
P.O. Box. 3049, Lower Queen Street, Richmond, Nelson, New Zealand
Tel: 64-3543-8800
Fax: 64-3543-8890
E-mail: sfc@nelsonpine.co.nz

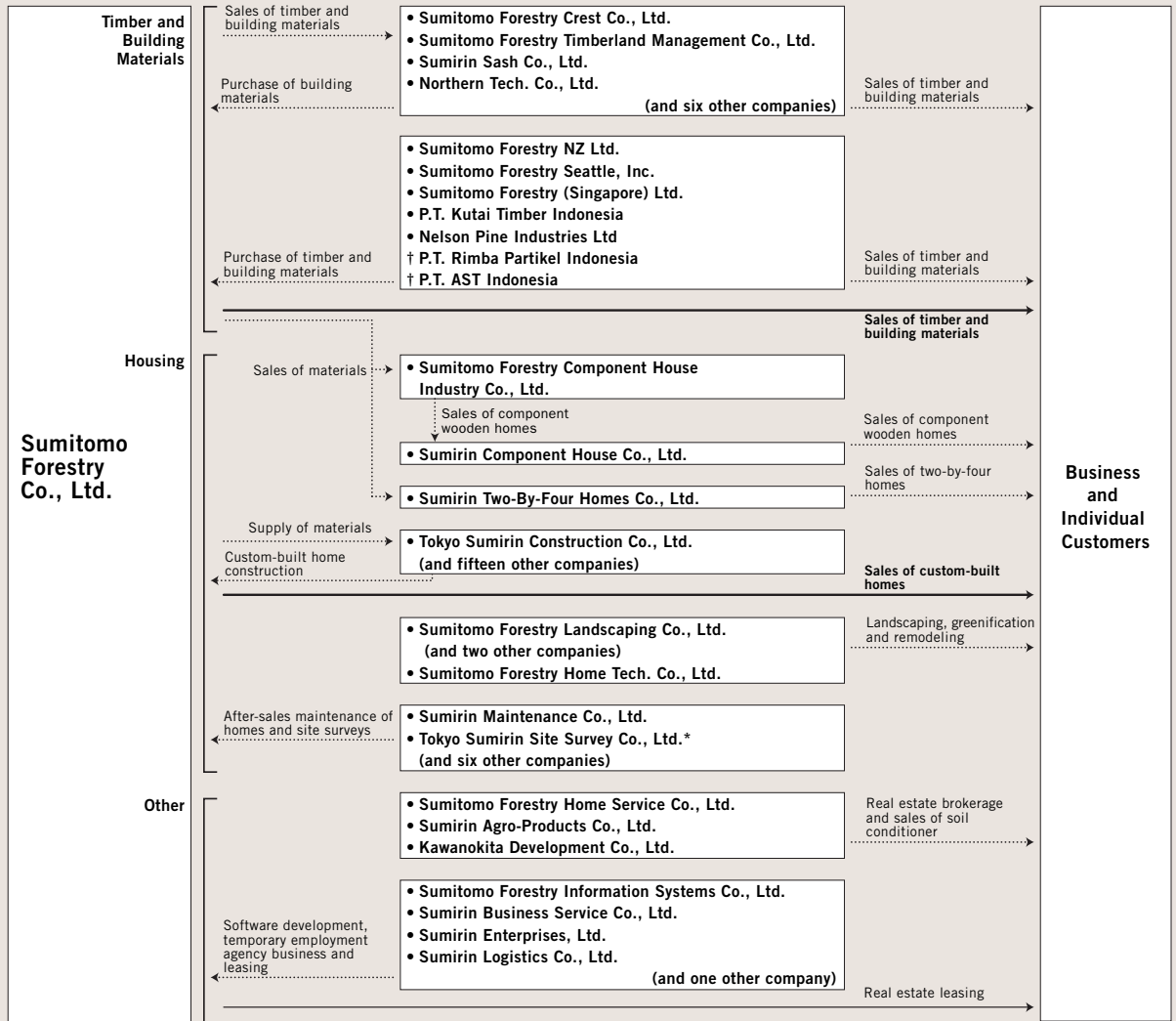
AFFILIATED COMPANIES

- 19 P.T. Rimba Partikel Indonesia**
P.O.Box. 127 KENDAL Desa. Mororejo, Kaliwungu, Kendal, Jawa Tengah, Indonesia
Tel: 62-24-8662990
Fax: 62-24-8662988/8662993
E-mail: rpisrg@indosat.net.id
- 20 Jakarta Office**
Gedung Idola Tunggal Sliipi, JL. Letjen S.Parmar Kav.67, Jakarta 11410, Indonesia
Tel: 62-21-5321637
Fax: 62-21-5301313
E-mail: rimbajkt@cbn.net.id
- 21 P.T. AST Indonesia**
KITW Technopark Blok A-01, JL. Raya Semarang-Kendal KM. 12, Semarang, Indonesia
Tel: 62-24-8664800
Fax: 62-24-8664801/8664452

(As of July 1, 2002)



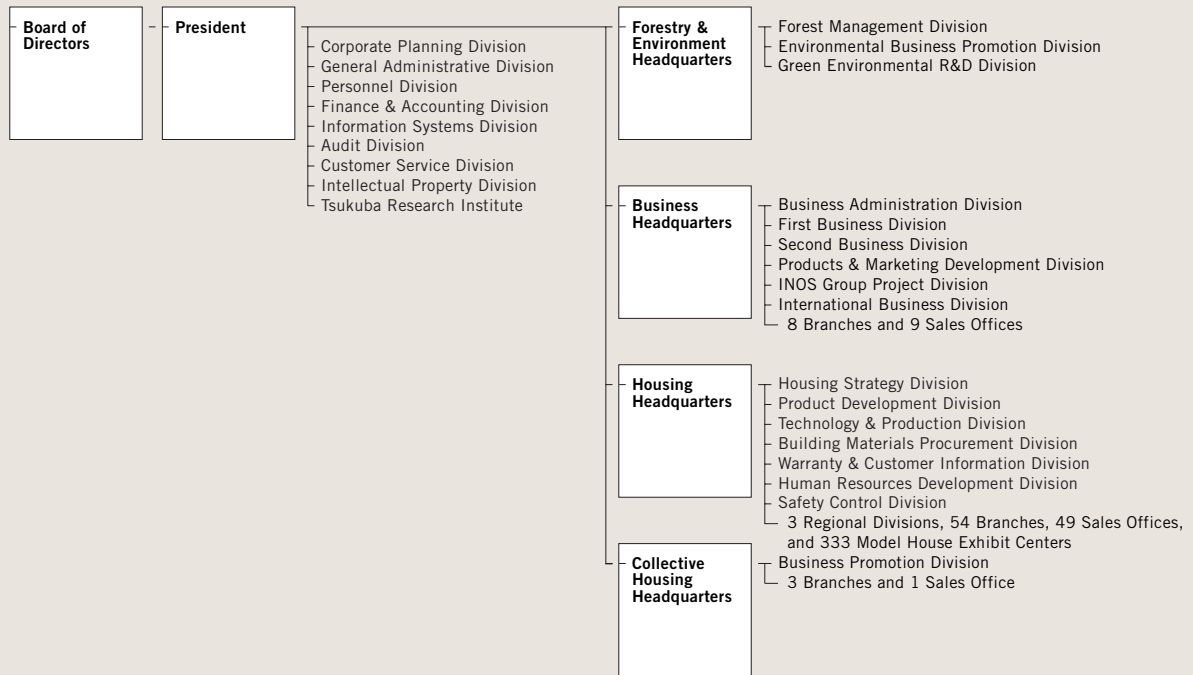
SUBSIDIARIES AND AFFILIATES



• Consolidated Subsidiary
 † Equity-method Affiliate
 * Seven companies and the soil improvement divisions of two construction subsidiaries were merged in April 2002 and established as Kanto Sumirin Base Techno Co., Ltd., Tokai Sumirin Base Techno Co., Ltd. and Kinki Sumirin Base Techno Co., Ltd.

(As of March 31, 2002)

ORGANIZATION CHART



(As of July 1, 2002)

CORPORATE DATA

Founded

1691

Incorporated

1948

Stock Exchange Listings

Tokyo, Osaka

Paid-in Capital

¥27,672 million

Head Office (Tokyo)

Shinjuku Green Tower Building,
14-1, Nishi-Shinjuku 6-chome,
Shinjuku-ku, Tokyo 160-8360, Japan

First Business Division

Tel: 81-3-5322-6700

Fax: 81-3-5322-6800

International Business Division

Tel: 81-3-5322-6680

Fax: 81-3-5322-6780

General Administrative Division

Tel: 81-3-5322-6666

Fax: 81-3-5322-6766

URL: <http://www.sfc.co.jp/>

Head Office (Osaka)

Sumitomo Building No. 2,
7-28, Kitahama 4-chome,
Chuo-ku, Osaka 541-0041, Japan

Tel: 81-6-6220-8600

Fax: 81-6-6220-8612

Number of Shareholders

13,518

(As of March 31, 2002)



(Front) Ryu Yano
(Back, from left)
Kanji Sugano,
Akihiro Ueda,
Yukihiko Goto

**DIRECTORS AND
AUDITORS**

Directors

Ryu Yano*
Yukihiko Goto*
Kanji Sugano*
Akihiro Ueda*
Nobuo Suzuki
Shuji Kitamura
Kazuo Kai

(*Representative Director)

Statutory Auditors

Yoshihiro Kado
Masahiro Kawachi
Toshio Inoue
Hiroshi Miki
Satohiko Sasaki

EXECUTIVE OFFICERS

**President and Chief
Executive Officer**

Ryu Yano

**Vice Presidents and
Executive Officers**

Yukihiko Goto
Kanji Sugano

Senior Executive Officer

Akihiro Ueda

**Managing Executive
Officers**

Nobuo Suzuki
Shuji Kitamura
Kazuo Kai
Junji Ikai

Executive Officers

Joji Itoh
Hideo Kanai
Masayuki Kato
Shoichi Takahashi
Kazushige Yahagi
Ryuichi Takayama
Shoichi Iwasa
Shinichi Miyake
Hideki Nose

(As of June 27, 2002)

Head Office (Tokyo)

Shinjuku Green Tower Building,
14-1, Nishi-Shinjuku 6-chome,
Shinjuku-ku, Tokyo 160-8360, Japan
Tel: 81-3-5322-6666
Fax: 81-3-5322-6766

Head Office (Osaka)

Sumitomo Building No. 2,
7-28, Kitahama 4-chome,
Chuo-ku, Osaka 541-0041, Japan
Tel: 81-6-6220-8600
Fax: 81-6-6220-8612

URL: <http://www.sfc.co.jp/>