

Overseas Network

OVERSEAS OFFICES AND SUBSIDIARIES

1. SEATTLE OFFICE/
SUMITOMO FORESTRY SEATTLE, INC.
1000 Second Avenue, Suite 1220, Seattle, Washington 98104, U.S.A.
Tel : 1-206-623-8840
Fax: 1-206-345-0391
E-mail: sfc@hitmark.com
2. VANCOUVER OFFICE
460, 1140 West Pender Street, Vancouver, British Columbia, Canada, V6E 4G1
Tel : 1-604-681-8184
Fax: 1-604-681-6568
E-mail: sfc@sfcvcr.com
3. AMSTERDAM OFFICE
Rivierstaete Building, 3rd Floor No. 22, Amsteldijk 166 1079LH, Amsterdam, The Netherlands
Tel : 31-20-646-4140
Fax: 31-20-646-5372
E-mail: sfc3@smtforams.nl
4. JAKARTA OFFICE
Summitas II, 8th Floor, JL. Jend. Sudirman Kav. 61-62, Jakarta 12190, Indonesia
Tel : 62-21-5200368
Fax: 62-21-5202069
E-mail: sfcjkt@cbn.net.id
5. SINGAPORE OFFICE/
SUMITOMO FORESTRY (SINGAPORE) LTD.
6 Raffles Quay #14-04/05, John Hancock Tower, Singapore 048580
Tel : 65-6435-0150
Fax: 65-6435-0151
E-mail: adm@sfsapore.com.sg
6. KHABAROVSK OFFICE
"PARUS HOTEL" 208, 5, Shevchenko Street, Khabarovsk 680000, Russia
Tel : 7-4212-32-68-58
Fax: 7-4212-32-83-61
E-mail: sfc@interglobal-one.ru

7. DALIAN OFFICE
Senmao Building, 13th Floor, 147 Zhongshan Road, Xigang District Dalian, 116011, PRC
Tel : 86-411-367-8060/8062
Fax: 86-411-367-8061
E-mail: sfcidl@online.ln.cn
8. TAWAU OFFICE
P.O. Box 946, 91008, Tawau, Sabah, Malaysia
Tel : 60-89-772979
Fax: 60-89-761060
9. KOTA KINABALU OFFICE
Lot 1-5-E4, 5th Floor, Centre Point Sabah, No. 1, Jalan Centre Point, 88000, Kota Kinabalu, Sabah, Malaysia
Tel : 60-88-242031
Fax: 60-88-268031
E-mail: sfcctu@tm.net.my
10. MIRI OFFICE
P.O. Box. 493, 98007, Lot 231 No.15, Hokkien Road, Miri, Sarawak, Malaysia
Tel : 60-85-413459
Fax: 60-85-413598
E-mail: sfcmiri@tm.net.my
11. SIBU OFFICE
P.O. Box. 1563, 96008, No. 52, 2nd Floor, Tanahmas Building, Kg. Nyabor, Sibu, Sarawak, Malaysia
Tel : 60-84-312777
Fax: 60-84-317635
12. AUCKLAND OFFICE/
SUMITOMO FORESTRY NZ LIMITED
P.O. Box. 91219, Auckland Mail Centre, Level 11, Westpac Tower, 120 Albert Street, Auckland, New Zealand
Tel : 64-9-309-0012
Fax: 64-9-309-0014
E-mail: sfnz@xtra.co.nz/
sumitomo@xtra.co.nz

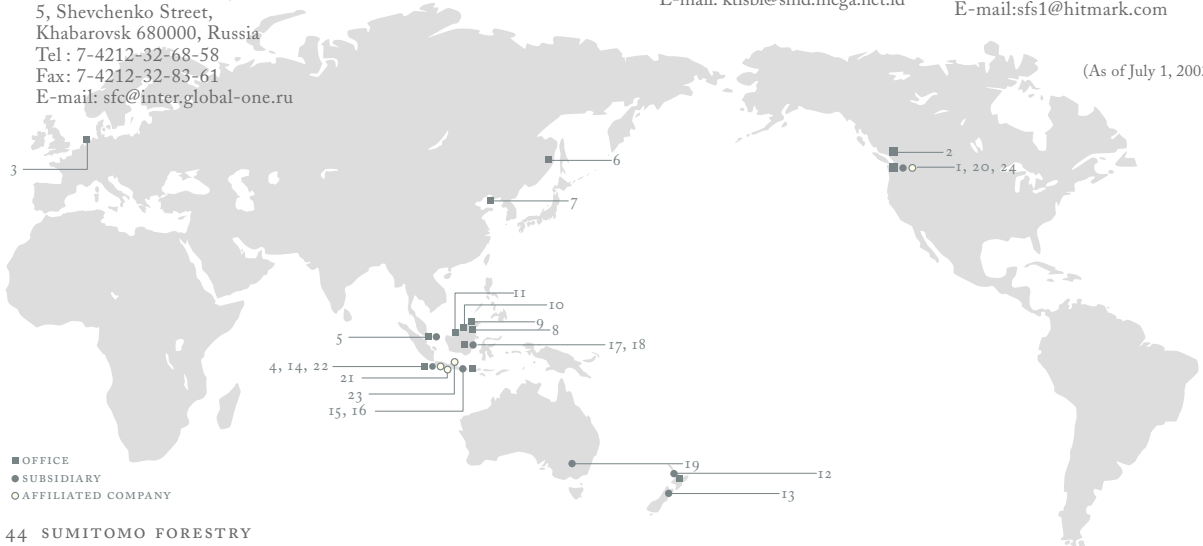
13. NELSON PINE INDUSTRIES LIMITED
P.O. Box. 3049, Lower Queen Street, Richmond, Nelson, New Zealand
Tel : 64-3543-8800
Fax: 64-3543-8890
E-mail: sfc@nelsonpine.co.nz
14. P.T. KUTAI TIMBER INDONESIA
P.O. Box. 6913/JKSST, Summitas II, 8th Floor, JL. Jend. Sudirman Kav. 61-62, Jakarta 12190, Indonesia
Tel : 62-21-2521260
Fax: 62-21-5200313
E-mail: ga-ikt@kti.co.id
15. PLYWOOD FACTORY PROBOLINGGO
P.O. Box. 101 Probolinggo, JL. Tanjung Tembaga Baru, Probolinggo, Jawa Timur, Indonesia
Tel : 62-335-42-2412
Fax: 62-335-42-1669
E-mail: pr@kti.co.id
16. SURABAYA OFFICE
P.O. Box. 306, Surabaya, JL. Kusuma Bangsa No. 19, Surabaya, Jawa Timur, Indonesia
Tel : 62-31-5343835
Fax: 62-31-5343838
E-mail: ktisby@kti.co.id
17. SAMARINDA OFFICE
JL. Basuki Rahmat II No. 02 Samarinda 75121, Kelurahan Timur, Indonesia
Tel : 62-541-741966/737926
Fax: 62-541-741967
18. SEBULU LABORATORY
Sebul-Kalimantan Timur, Kalimantan Timur, Indonesia
Tel : 62-541-737436
Fax: 62-541-205516
E-mail: ktisbl@smd.mega.net.id

19. ALPINE MDF INDUSTRIES PTY LTD.
Lot-1 Crosler Lane, Wangaratta VIC 3677, Australia
20. PACIFIC WOOD PRODUCTS LLC
16310 NE 85th St. Suite 100, Redmond, Washington 98052, U.S.A.
Tel : 010(1)425-885-1777
Fax: 010(1)425-885-0057
E-mail: sfs1@hitmark.com

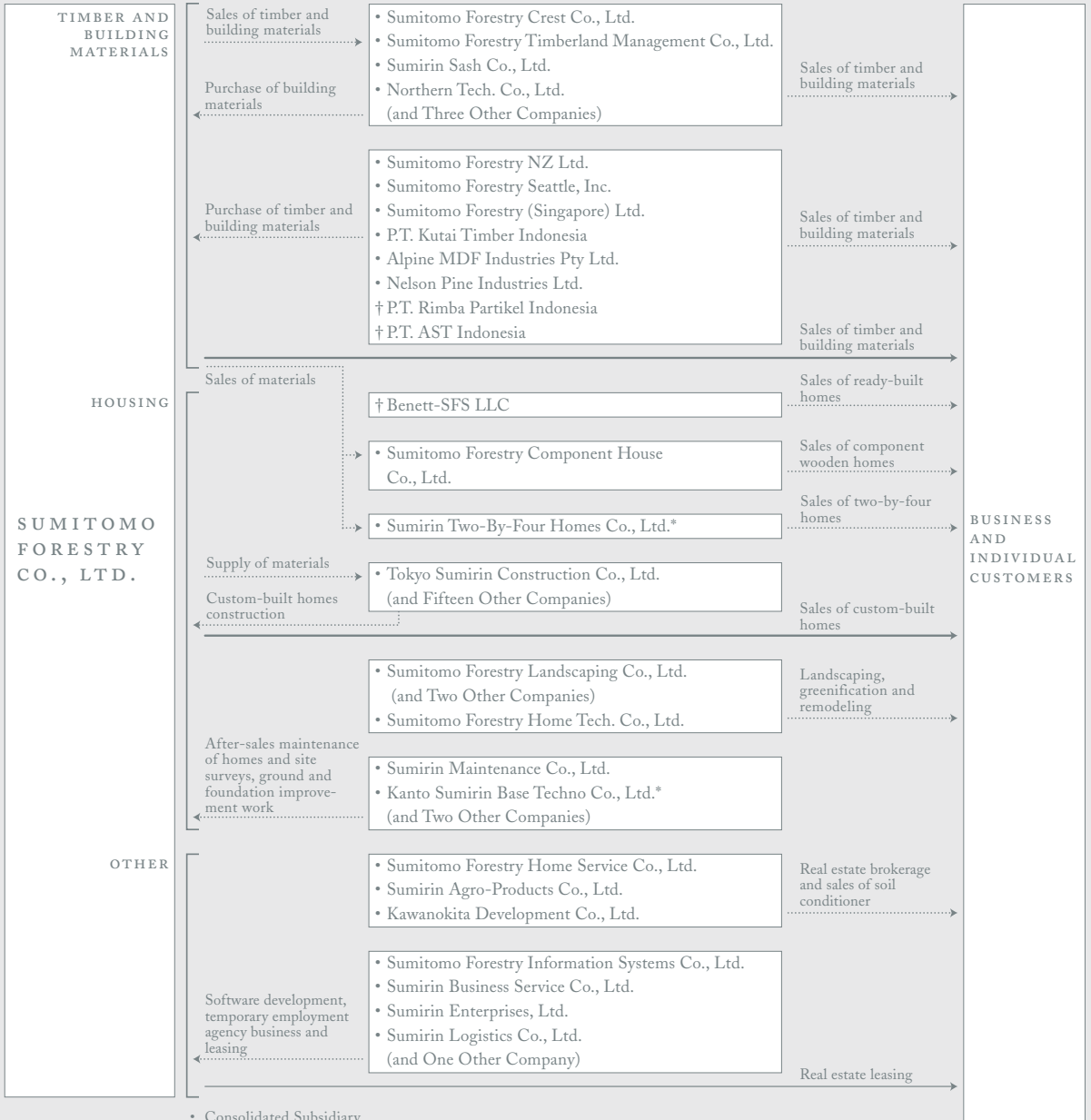
AFFILIATED COMPANIES

21. P.T. RIMBA PARTIKEL INDONESIA
P.O.Box. 127 KENDAL Desa. Mororejo, Kaliwungu, Kendal, Jawa Tengah, Indonesia
Tel : 62-24-8662990
Fax: 62-24-8662988/8662993
E-mail: rpisrg@indosat.net.id
22. JAKARTA OFFICE
Gedung Idola Tunggal Slipi, JL. Letjen S.Parmar Kav.67, Jakarta 11410, Indonesia
Tel : 62-21-5321637
Fax: 62-21-5301313
E-mail: rimbajkt@cbn.net.id
23. P.T. AST INDONESIA
KITW Technopark Blok A-01, JL. Raya Semarang-Kendal km. 1z, Semarang, Indonesia
Tel : 62-24-8664800
Fax: 62-24-8664801/8664452
24. BENNETT-SFS LLC
c/o 1000 Second Avenue, Suite 1220, Seattle, Washington 98104, U.S.A.
Tel : 010(1)206-623-8840
Fax: 010(1)206-345-0391
E-mail: sfs1@hitmark.com

(As of July 1, 2003)

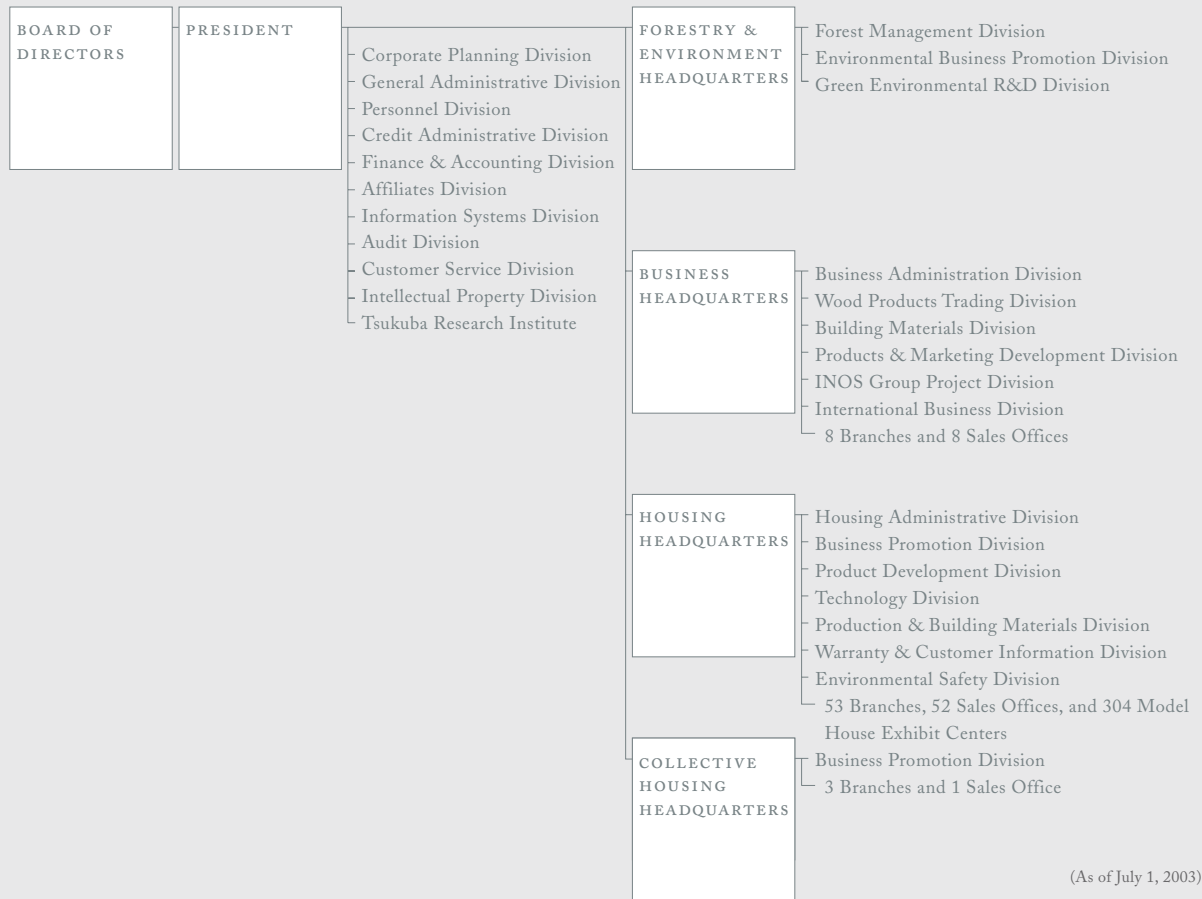


Subsidiaries and Affiliates



(As of March 31, 2003)

Organization Chart



Corporate Data

FOUNDED
1691

INCORPORATED
1948

STOCK EXCHANGE LISTINGS
Tokyo, Osaka

PAID-IN CAPITAL
¥27,672 million

HEAD OFFICE (TOKYO)
Shinjuku Green Tower Building,
14-1, Nishi-Shinjuku 6-chome,
Shinjuku-ku, Tokyo 160-8360, Japan

- *Wood Products Division*
Tel : 81-3-5322-6700
Fax: 81-3-5322-6800
 - *International Business Division*
Tel : 81-3-5322-6680
Fax: 81-3-5322-6780
 - *General Administrative Division*
Tel : 81-3-5322-6666
Fax: 81-3-5322-6766
- URL: <http://www.sfc.co.jp/>

HEAD OFFICE (OSAKA)
Sumitomo Building No. 2,
7-28, Kitahama 4-chome,
Chuo-ku, Osaka 541-0041, Japan
Tel: 81-6-6220-8607
Fax: 81-6-6220-8612

NUMBER OF SHAREHOLDERS
12,776

(As of March 31, 2003)

Board of Directors, Auditors and Executive Officers



(From right to left)
Ryu Yano,
Yukihiro Goto,
Kanji Sugano,
Akihiro Ueda

DIRECTORS AND AUDITORS

DIRECTORS

Ryu Yano*
Yukihiro Goto*
Kanji Sugano*
Akihiro Ueda*
Nobuo Suzuki
Shuji Kitamura
Kazuo Kai
(*Representative Director)

STATUTORY AUDITORS

Yoshihiro Kado
Junji Ikai
Joji Itoh
Hiroshi Miki
Satohiko Sasaki

EXECUTIVE OFFICERS

PRESIDENT AND CHIEF EXECUTIVE OFFICER

Ryu Yano

VICE PRESIDENTS AND EXECUTIVE OFFICERS

Yukihiro Goto
Kanji Sugano

SENIOR EXECUTIVE OFFICER

Akihiro Ueda

MANAGING EXECUTIVE OFFICERS

Nobuo Suzuki
Shuji Kitamura
Kazuo Kai
Shoichi Takahashi

EXECUTIVE OFFICERS

Masahiro Kawachi
Hideo Kanai
Masayuki Kato
Kazushige Yahagi
Ryuichi Takayama
Shoichi Iwasa
Shinichi Miyake
Hideki Nose
Toshio Kohigashi

(As of June 27, 2003)

Head Office (Tokyo)

Shinjuku Green Tower Building,
14-1, Nishi-Shinjuku 6-chome,
Shinjuku-ku, Tokyo 160-8360, Japan
Tel: 81-3-5322-6666
Fax: 81-3-5322-6766

Head Office (Osaka)

Sumitomo Building No. 2,
7-28, Kitahama 4-chome,
Chuo-ku, Osaka 541-0041, Japan
Tel: 81-6-6220-8600
Fax: 81-6-6220-8612

URL: <http://www.sfc.co.jp/>