

November 30, 2021

For Immediate Release

Sumitomo Forestry Co., Ltd.

## **Revisions to Organizational Structure and Personnel Transfers**

Sumitomo Forestry Co., Ltd. hereby announce the following revisions for organizational structure and personnel changes to take effect on January 1, 2022.

### **I. Organizational revisions (as of January 1, 2022)**

#### **1. Reorganization of the Head Office**

##### **(1) Establishment of the new Productivity Enhancement Department**

The Productivity Enhancement Department will be newly established under the Corporate Planning Department.

##### **(2) Establishment of the new Corporate History Compilation Department**

The Corporate History Compilation Department will be established under the Corporate Communications Department. To commemorate the 75th anniversary of the company's founding in 2023, the department will collect and organize various materials for the publication of the corporate history and systematically record the company's history.

#### **2. Reorganization of the Environment and Resources Division**

##### **(1) Establishment of the new Forest Carbon Sink Business Department**

The new Forest Carbon Sink Business Department will be established to create new businesses for decarbonization and to plan new businesses to increase corporate value.

#### **3. Reorganization of the Timber and Building Materials Division**

##### **(1) Name change of the Domestic Marketing Department**

The Domestic Marketing Department will be renamed the Business Marketing Department.

##### **(2) Name change of the International Marketing Department**

The International Marketing Department will be renamed the Timber Marketing Department.

##### **(3) Abolishment of the existing INOS Department**

The INOS Department of the Housing and Building Materials Department will be abolished and the new INOS Group will be established within the Housing and Building Materials Department.

#### **4. Reorganization of the Overseas Housing and Real Estate Division**

##### **(1) Establishment of the new Design and Construction Department**

The Engineering Group of the Asia and Oceania Business Department will be separated from the Asia and Oceania Business Department and established as the new Design and Construction Department.

## **5. Reorganization of Housing and Construction Division**

### **(1) Establishment of the new Construction Business Sub-Division**

1. The new Construction Business Sub-Division will be established to strengthen the structure of the medium and large-scale wooden architecture business.
2. The Construction Business Sub-Division is responsible for medium and large-scale architectural structures (including structures mixed with steel or reinforced concrete structures) and real estate development, and oversees the Construction Planning Department and the Construction Department under the Construction Business Sub-Division.

### **(2) Establishment of the new Construction Planning Department and the Construction Department**

The new Construction Planning Department and the Construction Department will be established under the Construction Business Sub-Division.

### **(3) Establishment of the new Asset Solution Department**

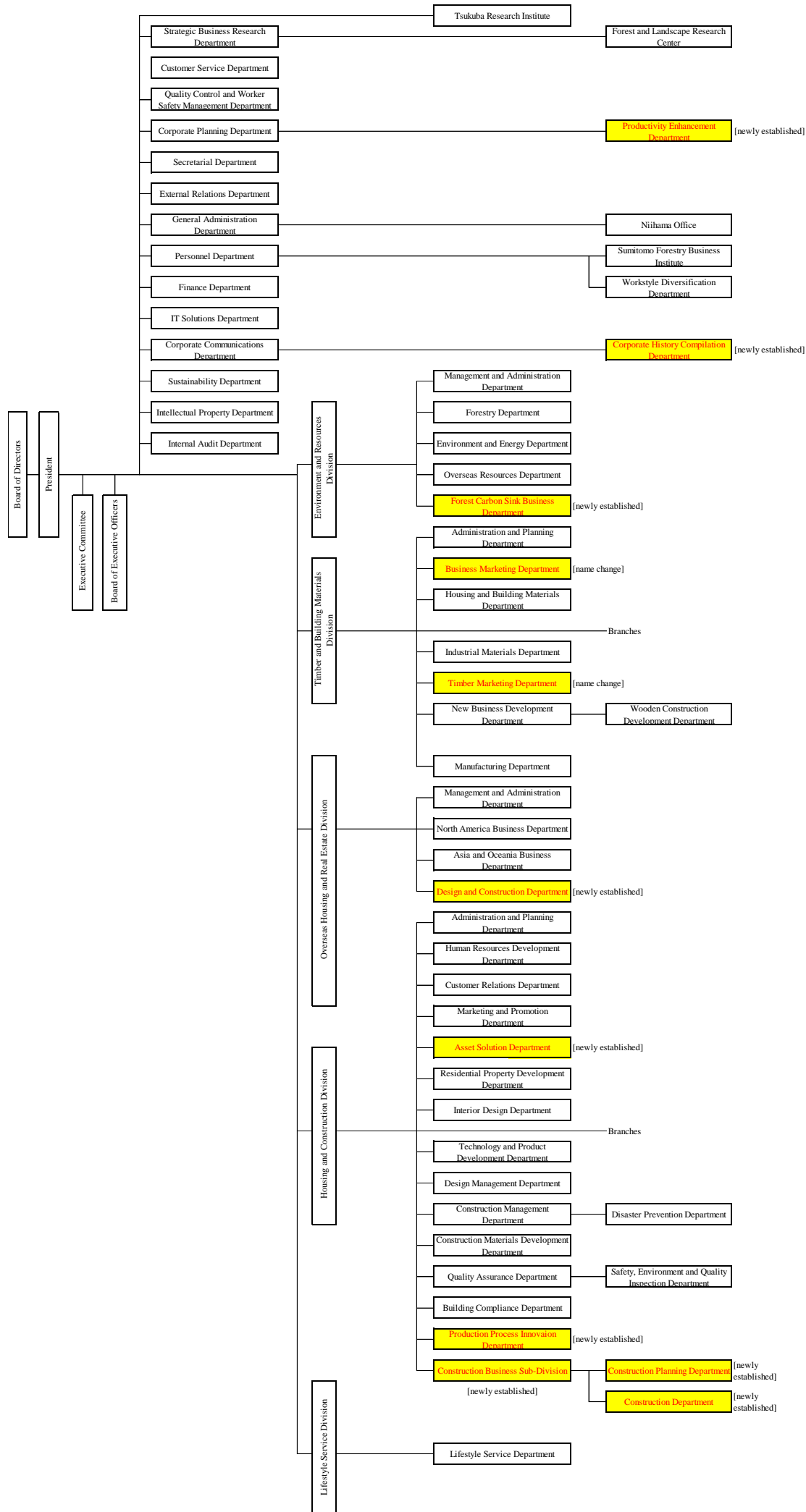
The Asset Solution Department will be newly established to expand the solution business related to land utilization for landowners.

### **(4) Abolishment of the existing Construction Market Development Department**

With the establishment of the Construction Business Sub-Division and the Asset Solution Department, the Construction Market Development Department will be abolished.

### **(5) Establishment of the new Production Process Innovation Department**

The new Production Process Innovation Department will be established to improve productivity and reduce costs in a series of production processes, including housing design, materials distribution, and construction.



## II. Personnel changes (as of January 1, 2022)

### 1. Changes in duties and responsibilities of officers (as of January 1, 2022)

[New]	[Old]	
Representative Director	Representative Director	
Executive Vice President	Executive Vice President	
Administering Lifestyle Service Division, in charge of General Administration, Secretary, External Relations,	Administering Lifestyle Service Division, in charge of General Administration, Secretary, External Relations,	Tatsuru Satoh
Personnel, IT Solutions, Intellectual Property, and Internal Audit	Personnel, IT Solutions, Intellectual Property, Internal Audit, and <u>the Tsukuba Research Institute</u>	
Director	Director	
<u>Senior Managing Executive Officer</u>	<u>Managing Executive Officer</u>	
Administering Housing and Construction Division and <u>Environment and Resources Division</u> , in charge of Corporate Planning, Finance, Corporate Communications and Sustainability	Administering Housing and Construction Division, in charge of Corporate Planning, Finance, Corporate Communications and Sustainability	Tatsumi Kawata
Director	Director	
Managing Executive Officer	Managing Executive Officer	Atsushi Kawamura
<u>Administering Timber and Building Materials Division, in charge of the Tsukuba Research Institute.</u>	Divisional Manager of Overseas Housing and Real Estate Division	
Divisional Manager of Overseas Housing and Real Estate Division		
<u>Director</u>	<u>Representative Director</u>	
<u>Executive Officer</u>	<u>Executive Vice President</u>	
<u>Assistant to President (in charge of Expo 2025 Osaka, Kansai)</u>	<u>Administering Timber and Building Materials Division and Environment and Resources Division</u>	Shigeru Sasabe
Managing Executive Officer	Managing Executive Officer	
<u>Deputy Divisional Manager of Housing and Construction Division (Oversees Customer Relations Department, Production Process Innovation Department, Construction Materials Development Department)</u>	<u>President and Representative Director, Sumitomo Forestry Residential Co., Ltd.</u>	Takahisa Higaki
<u>Managing Executive Officer</u>	<u>Executive Officer</u>	
Divisional Manager of Environment and Resources Division	Divisional Manager of Environment and Resources Division	Masanobu Nishikawa
Executive Officer	Executive Officer	
In charge of <u>Empowerment of Woman and Diversity.</u>	In charge of <u>Workstyle Reform and Empowerment of Woman.</u>	Junko Saishu
<u>General Manager of Intellectual Property Department</u>	<u>General Manager of Workstyle Diversification Department, Personnel Department</u>	

Executive Officer <u>Senior Statutory Auditor of Sumitomo Forestry Home Tech Co., Ltd.</u> <u>Assistant to Officer in charge of Internal Audit</u>	Executive Officer <u>General Manager of IT Solutions Department</u>	Koichi Shimizu
Executive Officer Deputy Divisional Manager of Timber and Building Materials Division <u>General Manager of Business Marketing Department</u> , Building Materials Division	Executive Officer Deputy Divisional Manager of Timber and Building Materials Division and <u>General Manager of Domestic Marketing Department</u>	Yoichi Hosoya
Executive Officer Deputy Divisional Manager of Overseas Housing and Real Estate Division (In charge of North American Business) and Sumitomo Forestry America, Inc. (President and <u>General Manager of Housing Department</u> )	Executive Officer Deputy Divisional Manager of Overseas Housing and Real Estate Division (In charge of North American Business) and President, Sumitomo Forestry America, Inc.	Atsushi Iwasaki
Executive Officer <u>General Manager of IT Solutions Department</u>	Executive Officer <u>Deputy Divisional Manager of Housing and Construction Division (Oversees Customer Relations and Construction Market Development)</u> , <u>General Manager of Administration and Planning Department, Housing and Construction Division</u> , <u>President and Representative Director, Kouei Kousan K.K.</u>	Tomio Tozaki

## 2. Officer appointments and retirements, changes in officer duties and responsibilities (as of March 29, 2022)

[New]	[Old] (as of January 1, 2022)	
Director Senior Managing Executive Officer Adminstrating Environment and Resources Division, and in charge of Corporate Planning, Finance, Corporate Communications and Sustainability	Director Senior Managing Executive Officer Adminstrating <u>Housing and Construction Division</u> and Environment and Resources Division, and in charge of Corporate Planning, Finance, Corporate Communications and Sustainability	Tatsumi Kawata
<u>Director</u> Managing Executive Officer Divisional Manager of Housing and Construction Division	Managing Executive Officer Divisional Manager of Housing and Construction Division	Ikuro Takahashi
<u>Senior Advisor</u> <u>Special Missions (in charge of Expo 2025 Osaka, Kansai)</u>	<u>Director and Executive Officer</u> <u>Assistant to President (in charge of Expo 2025 Osaka, Kansai)</u>	Shigeru Sasabe
<u>Executive Officer</u> General Manager of Corporate Planning Department and Productivity Enhancement Department	<u>Supervisory Officer</u> General Manager of Corporate Planning Department and Productivity Enhancement Department	Nobuyuki Otani
<u>Executive Officer</u> General Manager of Sustainability Department	General Manager of Sustainability Department	Yuko Iizuka
<u>Executive Officer</u> Deputy Divisional Manager of Overseas Housing and Real Estate Division (oversees Design and Construction Department) and General Manager of Asia and Oceania Business Department	Deputy Divisional Manager of Overseas Housing and Real Estate Division (oversees Design and Construction Department) and General Manager of Asia and Oceania Business Department	Kenji Inui
<u>Supervisory Officer</u> Senior Statutory Auditor of Sumitomo Forestry Home Tech Co., Ltd., and Assistant to Officer in charge of Internal Audit	Executive Officer Senior Statutory Auditor of Sumitomo Forestry Home Tech Co., Ltd., and Assistant to Officer in charge of Internal Audit	Koichi Shimizu

<Reference> In conjunction with the above appointments and retirements, the directors to be decided by resolution at the General Meeting of Shareholders and meeting of the Board of Directors on March 29, 2022 are as follows:

Akira Ichikawa	Chairman of the Board (Representative Director)
Toshiro Mitsuyoshi	President/Director (Representative Director)
Tatsuru Satoh	Director (Representative Director)
Tatsumi Kawata	Director
Atsushi Kawamura	Director
Ikuro Takahashi	Director
Junko Hirakawa	Director (Outside Director)
Izumi Yamashita	Director (Outside Director)
Mitsue Kurihara	Director (Outside Director)

<Reference> In conjunction with the above appointments and retirements, the executive officers to be decided by resolution at meeting of the Board of Directors after the General Meeting of Shareholders on March 29, 2022 are as follows:

Toshiro Mitsuyoshi	President and Executive Officer
Tatsuru Satoh	Executive Vice President
Tatsumi Kawata	Senior Managing Executive Officer
Atsushi Kawamura	Managing Executive Officer
Ikuro Takahashi	Managing Executive Officer
Kanpei Tokunaga	Managing Executive Officer
Takahisa Higaki	Managing Executive Officer
Kunihiko Takagiri	Managing Executive Officer
Koji Tanaka	Managing Executive Officer
Masanobu Nishikawa	Managing Executive Officer
Junko Saishu	Executive Officer
Kazutaka Horita	Executive Officer
Yoichi Hosoya	Executive Officer
Yutaka Kamiya	Executive Officer
Atsushi Iwasaki	Executive Officer
Takumi Shimahara	Executive Officer
Tomio Tozaki	Executive Officer
Nobuyuki Otani	Executive Officer
Yuko Iizuka	Executive Officer
Kenji Inui	Executive Officer

### 3. Supervisory Officer appointments and retirements (as of March 29, 2022)

#### [Appointees]

Koichi Shimizu	Senior Statutory Auditor of Sumitomo Forestry Home Tech Co., Ltd., and Assistant to Officer in charge of Internal Audit
Satoshi Omiya	General Manager of Customer Service Department
Toshiya Sakamaki	General Manager of Technology and Product Development Department, Housing and Construction Division and Manager of Housing Technology and Product Development Center, Tsukuba Research Institute
Hiroki Nishihara	General Manager of Construction Management Department, Housing and Construction Division
Tsuyoshi Katoh	Deputy Divisional Manager of Environment and Resources Division, General Manager of Forest Carbon Sink Business Department, Environment and Resources Division, President and Representative Director of WSL, MTI, KMF
Yasuyuki Sindou	General Manager of Strategic Business Research Department

#### [Retirees]

Akio Numazaki	Vice President and Director, Sumitomo Forestry Home Engineering Co., Ltd.
Tsunetaka Kato	Chief Engineer of Human Resources Development Department and Design Management Department, Housing and Construction Division
Ichiro Nakajima	General Manager of Tsukuba Research Institute
Akira Kanamori	General Manager of Corporate History Compilation Department, Corporate Communications Department
Nobuyuki Otani	General Manager of Corporate Planning Department, and General Manager of Productivity Enhancement Department Corporate Planning Department



<Reference> In conjunction with the above appointments and retirements, the supervisory officers as of March 29, 2022 are as follows:

\* Personnel changes at subsidiaries will take place after each company's General Meeting of Shareholders.

Ryoji Machino	President and Representative Director, Sumirin Care Life Co., Ltd.
Koichi Shimizu	Senior Statutory Auditor of Sumitomo Forestry Home Tech Co., Ltd., and Assistant to Officer in charge of Internal Audit
Kazuo Maniwa	President and Representative Director, Sumirin Fill Care Co., Ltd.
Takashi Okada	General Manager of Osaka Branch of Timber and Building Materials Division
Kazunari Hada	General Manager of Personnel Department
Hiroshi Yoshida	President and Representative Director, Sumitomo Forestry Residential Co., Ltd.
Yuichiro Ono	General Manager of Timber Marketing Department, Timber and Building Materials Division
Kiyoshi Sakurai	President and Representative Director, Sumitomo Forestry Home Service Co., Ltd.
Toshio Kakumoto	General Manager of General Administration Department
Tsuyoshi Nagae	Director and Senior Managing Executive Officer, Sumitomo Forestry Home Tech Co., Ltd.
Takashi Kamada	General Manager of Tokyo Branch of Timber and Building Materials Division
Satoshi Abe	General Manager of Manufacturing Department, Timber and Building Materials Division
Kazuhiro Sugiyama	Managing Executive Officer, Sumitomo Forestry Home Tech Co., Ltd.
Satoshi Omiya	General Manager of Customer Service Department
Toshiya Sakamaki	General Manager of Technology and Product Development Department, Housing and Construction Division and Manager of Housing Technology and Product Development Center, Tsukuba Research Institute
Hiroki Nishihara	General Manager of Construction Management Department, Housing and Construction Division
Tsuyoshi Katoh	Deputy Divisional Manager of Environment and Resources Division, General Manager of Forest Carbon Sink Business Department, Environment and Resources Division, President and Representative Director of WSL, President and Representative Director of MTI, and President and Representative Director of KMF
Yasuyuki Shindou	General Manager of Strategic Business Research Department

#### 4. Personnel Changes of General Managers and Branch Managers etc. (as of January 1, 2022)

New	Old	Name
■As of January 1, 2022		
Supervisory Officer General Manager of Corporate Planning Department and Productivity Enhancement Department	Supervisory Officer General Manager of Corporate Planning Department	Nobuyuki Otani
Supervisory Officer General Manager of Corporate History Compilation Department, Corporate Communications Department	Supervisory Officer President and Representative Director, Sumitomo Forestry Information Systems Co., Ltd	Akira Kanamori
Supervisory Officer General Manager of Timber Marketing Department, Timber and Building Materials Division	Supervisory Officer General Manager of Industrial Materials Department and International Marketing Department, Timber and Building Materials Division	Yuichiro Ono
Supervisory Officer President and Representative Director, Sumitomo Forestry Residential Co., Ltd.	Supervisory Officer General Manager of Construction Market Development Department, Housing and Construction Division	Hiroshi Yoshida
General Manager of Workstyle Diversification Department, Personnel Department	Managing Director, Sumitomo Forestry Archi Techno Co., Ltd	Miyuki Nogiwa
General Manager of Sustainability Department	General Manager of Sustainability Department	Yuko Iizuka
General Manager of Internal Audit Department	General Manager of Administration and Planning Department, Timber and Building Materials Division	Itaru Ozaki
Deputy Divisional Manager of Environment and Resources Division, General Manager of Forest Carbon Sink Business Department, Environment and Resources Division, President and Representative Director of WSL, MTI, KMF	President and Representative Director of WSL, MTI, KMF	Tsuyoshi Kato
General Manager of Administration and Planning Department, Timber and Building Materials Division	Group Manager of Corporate Planning Department, Assistant to Statutory Auditor and Auditing Inspector	Eishi Himaki
General Manager of Industrial Materials Department, Timber and Building Materials Division	Group Manager of International Marketing Department, Timber and Building Materials Division and Director of Sumitomo Forestry Wood Products Co., Ltd.	Tomomitsu Yasunaga
Deputy Divisional Manager of Overseas Housing and Real Estate Division (oversees Design and Construction Department) and General Manager of Asia and Oceania Business Department, Overseas Housing and Real Estate Division	General Manager of Asia and Oceania Business Department, Overseas Housing and Real Estate Division	Kenji Inui
General Manager of Design and Construction Department, Overseas Housing and Real Estate Division	Chief Engineer of Asia and Oceania Business Department, Overseas Housing and Real Estate Division, Manager of Construction Market Development Department, Housing and Construction Division	Takahiro Fuwa

New	Old	Name
General Manager of Administration and Planning Department, Housing and Construction Division and President and Representative Director, Kouei Kousan K.K.	General Manager of Internal Audit Department	Kazuyoshi Shimizu
General Manager of Asset Solution Department, Housing and Construction Division	General Manager of Yokohama Branch of Housing and Construction Division	Masaaki Ue
General Manager of Disaster Prevention Department, Construction Management Department, Housing and Construction Division and General Manager of Safety, Environment and Quality Inspection Department, Quality Assurance Department	General Manager of Disaster Prevention Department, Construction Management Department, Housing and Construction Division	Motoichi Kotaki
General Manager of Production Process Innovation Department, Housing and Construction Division	General Manager of Safety, Environment and Quality Inspection Department, Quality Assurance Department, Housing and Construction Division	Katsumi Toda
General Manager of Construction Business Sub-Division and Construction Planning Department, Construction Department, Housing and Construction Division	General Manager of Construction Market Development Department, Housing and Construction Division	Kunio Imai
General Manager of Yokohama Branch of Housing and Construction Division	General Manager of Osaka Branch of Housing and Construction Division	Hiroataka Saito
General Manager of Yokohama-kita Branch of Housing and Construction Division	Manager of Kashiwa Branch Sales Group of Housing and Construction Division	Michio Kofuji
General Manager of Osaka Branch of Housing and Construction Division	General Manager of Okazaki Branch of Housing and Construction Division	Yasushi Nakajima
General Manager of Osaka-kita Branch of Housing and Construction Division	General Manager of Shizuoka Branch of Housing and Construction Division	Toshihiro Nishimura
General Manager of Osaka-minami Branch of Housing and Construction Division	General Manager of Nara Branch of Housing and Construction Division	Shinichi Fukuchi
General Manager of Shiga Branch of Housing and Construction Division	General Manager of Okayama Branch of Housing and Construction Division	Toshikatsu Miyazaki
General Manager of Nara Branch of Housing and Construction Division	General Manager of Osaka-kita Branch of Housing and Construction Division	Toshihiro Ichida
General Manager of Hiroshima Branch of Housing and Construction Division	General Manager of Oita Branch of Housing and Construction Division	Naomitsu Aoyama
General Manager of Okayama Branch of Housing and Construction Division	General Manager of Yamaguchi Branch of Housing and Construction Division	Yoji Hara
General Manager of Yamaguchi Branch of Housing and Construction Division	General Manager of Osaka-minami Branch of Housing and Construction Division	Daisuke Nakade
General Manager of Oita Branch of Housing and Construction Division	Manager of Kitakyushu Sales Office of Housing and Construction Division	Koji Sadamoto
General Manager of Okazaki Branch of Housing and Construction Division	General Manager of Gifu Branch of Housing and Construction Division	Naoto Furuhashi
General Manager of Shizuoka Branch of Housing and Construction Division	General Manager of Hamamatsu Branch of Housing and Construction Division	Yohei Kurosawa
General Manager of Hamamatsu Branch of Housing and Construction Division	Manager of Hamamatsu Branch Sales Group of Housing and Construction Division	Kazumasa Ono

New	Old	Name
General Manager of Gifu Branch of Housing and Construction Division	General Manager of Yokohana-kita Branch of Housing and Construction Division	Osamu Saito
President and Representative Director, Sumitomo Forestry Information Systems Co., Ltd.	General Manager of Intellectual Property Department	Yasuhiro Hachiya
President and Representative Director, Kawanokita Development Co., Ltd.	General Manager of Hiroshima Branch of Housing and Construction Division	Masayoshi Yamada
General Manager of Real Estate Development Department and Director of Sumitomo Forestry America, Inc.	Director, Sumitomo Forestry America, Inc.	Ippei Ikebuchi
General Manager of Business Development Department and Director of Sumitomo Forestry America, Inc., Director of Canyon Creek Cabinet Company	Director of Sumitomo Forestry America, Inc., Director of Canyon Creek Cabinet Company	Masaaki Iuchi