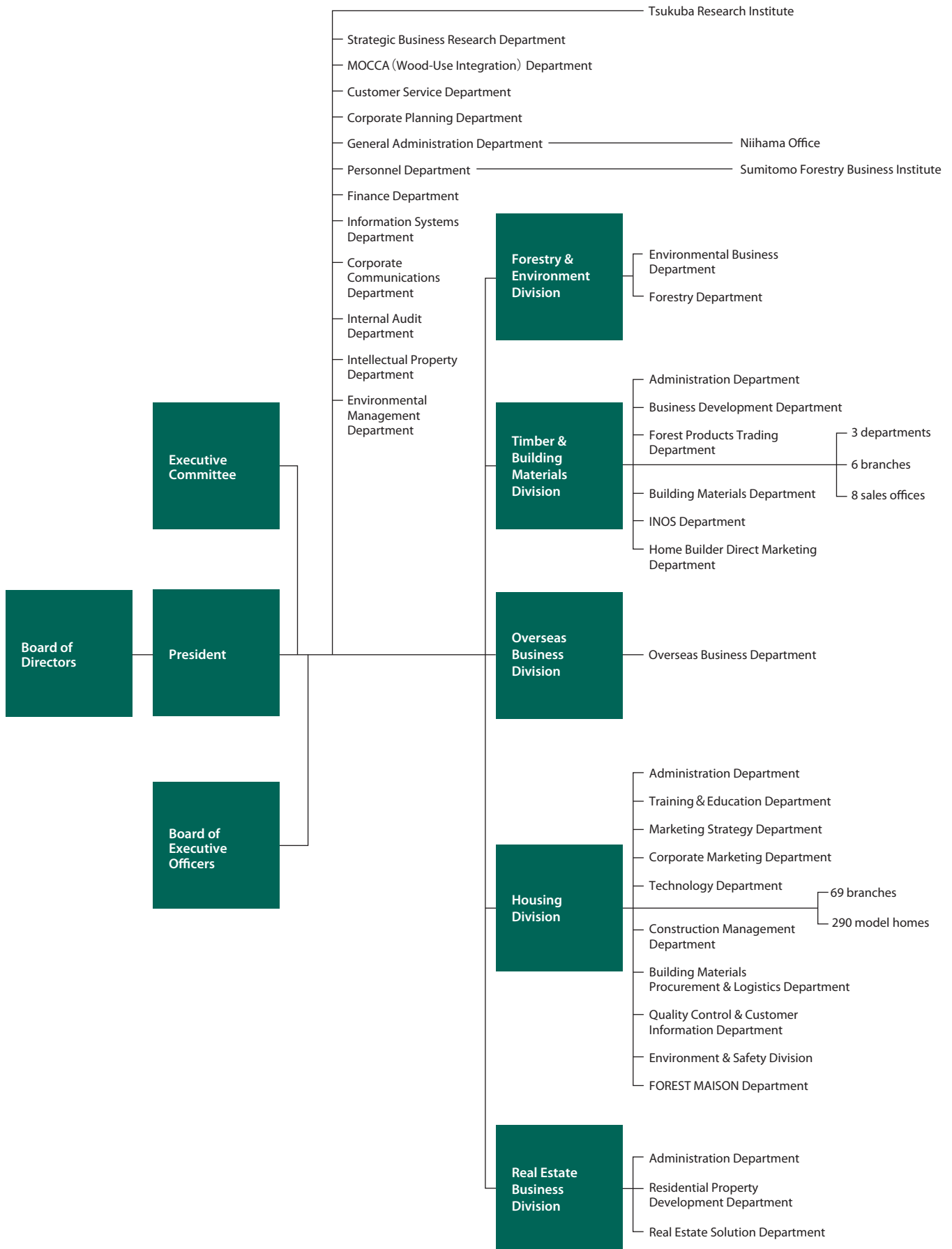


Organization Chart

(As of June 30, 2011)



Investor Information

(As of June 30, 2011)

Company Outline

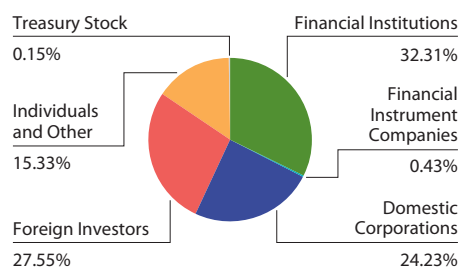
Company Name: Sumitomo Forestry Co., Ltd.	Head Office: Keidanren Kaikan, 3-2, Otemachi 1-chome, Chiyoda-ku, Tokyo 100-8270, Japan
Founded: 1691	Consolidated Subsidiaries: 45 (Overseas 18)
Incorporated: 1948	Associated Companies: 20 (Overseas 17)
Paid-in Capital: ¥27,672 million	Number of Employees (Consolidated): 13,778 (As of March 31, 2011)
Stock Exchange Listings: Tokyo, Osaka	Homepage: http://sfc.jp/english/
Total Number of Authorized Shares: 400,000,000	Independent Auditors: Ernst & Young ShinNihon LLC
Total Number of Shares Issued: 177,410,239	Contact Information: Sumitomo Forestry Co., Ltd. Corporate Communications Department IR Team Tel: 81-3-3214-2270 Fax: 81-3-3214-2272
Number of Shareholders: 12,675 (As of March 31, 2011)	
Ordinary Shareholders' Meeting: June	

Major Shareholders (As of March 31, 2011):

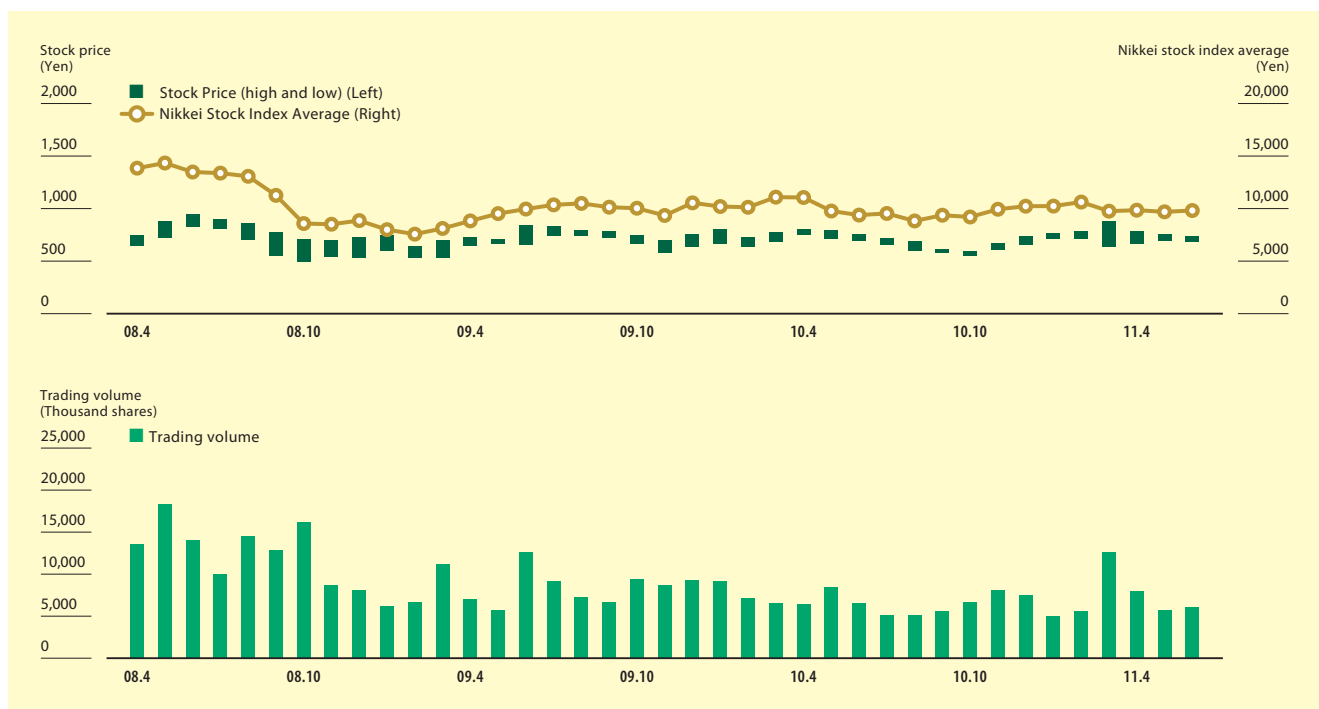
Shareholders	Number of shares held (Thousand shares)	Shareholding ratio (%)
Sumitomo Metal Mining Co., Ltd.	10,110	5.70
The Master Trust Bank of Japan, Ltd. (trust account)	7,726	4.36
The Iyo Bank, Ltd.	5,849	3.30
Japan Trustee Service Bank, Ltd. (trust account)	5,539	3.12
Sumitomo Corporation	4,383	2.47
Sumitomo Life Insurance Company	4,227	2.38
The Hyakujushi Bank, Ltd.	4,197	2.37
Sumitomo Mitsui Banking Corporation	4,136	2.33
Sumitomo Forestry Group Employees' Shareholding Association	3,742	2.11
The Sumitomo Trust and Banking Co., Ltd.	3,408	1.92

* Number of shares held less than 1 thousand shares have been omitted.

Breakdown of Shareholders (As of March 31, 2011):



Stock Price and Trading Volume (Osaka Securities Exchange):



Forward-Looking Statements

Statements in this annual report with respect to Sumitomo Forestry's plans, strategies, objectives, forecasts, and other statements that are not historical facts are forward-looking statements based on management's assumptions and beliefs based on information available as of the production date of this report. Actual results may differ significantly from those discussed herein, owing to the impact of various factors, including but not limited to changes in the business environment, general economic conditions, and customer preferences.



SUMITOMO FORESTRY CO.,LTD.

Corporate Communications Department IR team
Keidanren Kaikan, 3-2, Otemachi 1-chome,
Chiyoda-ku, Tokyo 100-8270, Japan
Tel: 81-3-3214-2270 Fax: 81-3-3214-2272
URL: <http://sfc.jp/english/>

