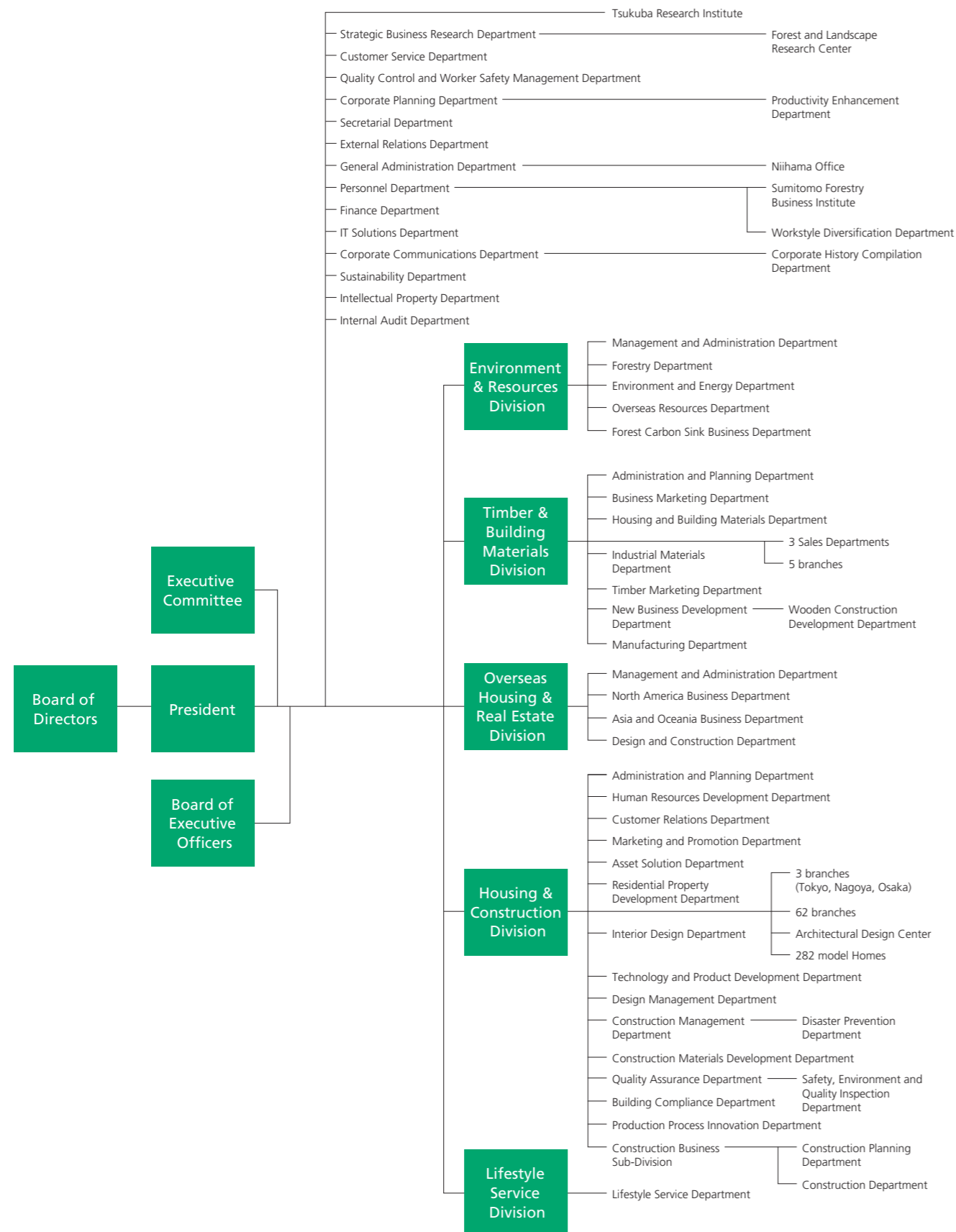


Organization chart (As of January 1, 2022)



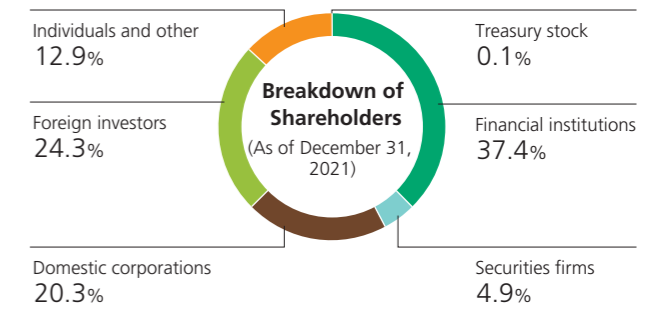
Corporate profile (as of December 31, 2021)

Corporate profile

Company name	Sumitomo Forestry Co., Ltd.
Founded	1691
Incorporated	1948
Paid-in capital	¥50,064 million
Head office	Keidanren Kaikan, 3-2, Otemachi 1-chome, Chiyoda-ku, Tokyo 100-8270, Japan
Consolidated subsidiaries	324 (Overseas 286)
Affiliated companies	132 (Overseas 122)
Number of employees (consolidated)	21,254
Homepage	https://sfc.jp/english/
Accounting auditor	Ernst & Young ShinNihon LLC
Contacts	Sumitomo Forestry Co., Ltd. Corporate Communications Department IR Group Tel :81-3-3214-2270 Fax:81-3-3214-2272 IR contact https://inquire.sfc.jp/sfc/m/contact/english/

Shareholders & Stock Information

Stock exchange listing	Tokyo
Total number of authorized shares	400,000,000
Total number of shares issued	201,200,936
Ordinary General Meeting of Shareholders	March
Number of shareholders	22,579



Percentages in breakdown of shareholders are rounded down.

Major shareholders

Shareholders	Number of shares held (Thousand shares)	Shareholding ratio (%)
The Master Trust Bank of Japan, Ltd. (trust account)	23,411	11.6
Sumitomo Metal Mining Co., Ltd.	10,110	5.0
Custody Bank of Japan, Ltd. (trust account)	9,727	4.8
The Iyo Bank, Ltd.	5,849	2.9
Kumagai Gumi Co., Ltd.	5,197	2.5
Sumitomo Corporation	4,383	2.1
Sumitomo Life Insurance Company	4,227	2.1
The Hyakujushi Bank, Ltd.	4,197	2.0
SMBC Nikko Securities Inc.	4,076	2.0
Sumitomo Mitsui Banking Corporation	3,536	1.7

(Note) Number of shares held and shareholding ratio are rounded down. Shareholding ratio is calculated by subtracting treasury stock from the total number of outstanding shares.