

## STOCK INFORMATION (As of March 31, 2009)

### Stock Exchange Listings:

Tokyo, Osaka

### Common Stock Authorized:

400,000,000 shares

### Issued:

177,410,239 shares

### Number of Shareholders:

12,959

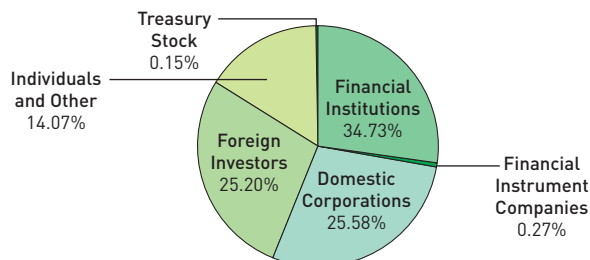
### General Meeting of Shareholders:

June

### Major Shareholders:

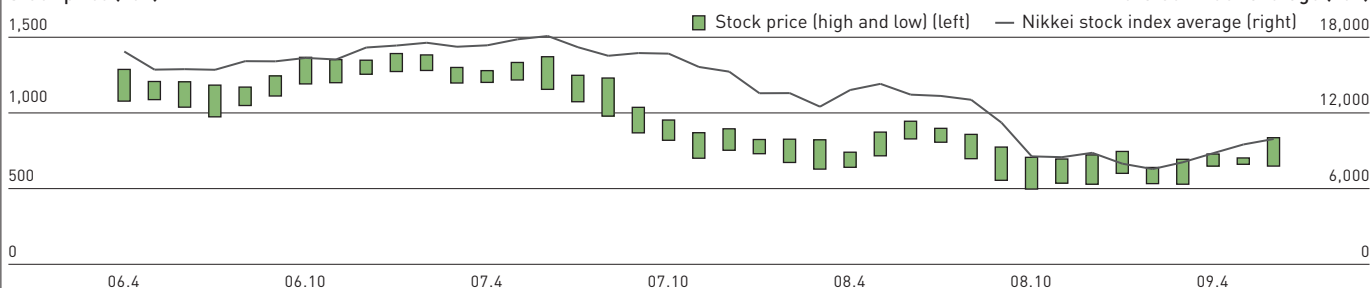
Shareholders	Number of shares held (Thousand shares)	Shareholding ratio (%)
Sumitomo Metal Mining Co., Ltd.	10,110	5.70
Japan Trustee Service Bank, Ltd. (trust account 4G)	7,865	4.43
Japan Trustee Service Bank, Ltd. (trust account)	7,669	4.32
The Master Trust Bank of Japan, Ltd. (trust account)	7,048	3.97
The Iyo Bank, Ltd.	5,850	3.30
Sumitomo Corporation	4,383	2.47
Sumitomo Life Insurance Company	4,227	2.38
The Hyakujushi Bank, Ltd.	4,198	2.37
Sumitomo Mitsui Banking Corporation	4,136	2.33
Sumitomo Forestry Group Employees' Shareholding Association	3,409	1.92

### Breakdown of Shareholders:

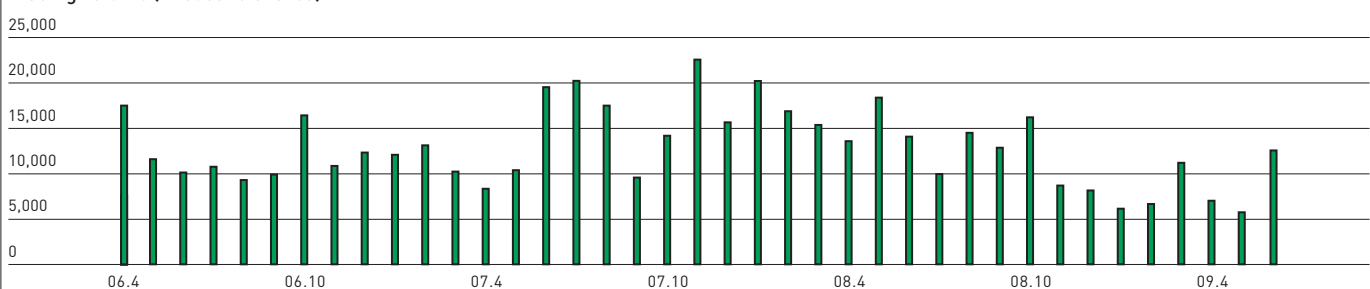


### Stock Price and Trading Volume (Osaka Securities Exchange):

#### Stock price (Yen)



#### Trading volume (Thousand shares)



## CORPORATE DATA (As of June 30, 2009)

### Company Name:

Sumitomo Forestry Co., Ltd.

### Founded:

1691

### Incorporated:

1948

### Paid-in Capital:

¥27,672 million

### Head Office:

Keidanren Kaikan,  
3-2, Otemachi 1-chome, Chiyoda-ku,  
Tokyo 100-8270, Japan

### Consolidated Subsidiaries:

45 (Overseas 16)

### Associated Companies:

10 (Overseas 7)

### Number of Employees (Consolidated):

13,633

### Homepage:

<http://sfc.jp/english/>

### Independent Auditors:

Ernst & Young ShinNihon LLC

### Contact Information:

Sumitomo Forestry Co., Ltd.  
Corporate Communications Department  
Tel: 81-3-3214-2270  
Fax: 81-3-3214-2272



Keidanren Kaikan, 3-2, Otemachi 1-chome,  
Chiyoda-ku, Tokyo 100-8270, Japan  
Tel: 81-3-3214-2270 Fax: 81-3-3214-2272  
URL: <http://sfc.jp/english/>