

# Investor Information (As of June 30, 2010)

**Company Name:** Sumitomo Forestry Co., Ltd.

**Founded:** 1691

**Incorporated:** 1948

**Paid-in Capital:** ¥27,672 million

**Head Office:** Keidanren Kaikan, 3-2, Otemachi 1-chome, Chiyoda-ku, Tokyo 100-8270, Japan

**Consolidated Subsidiaries:** 46 (Overseas 18)

**Associated Companies:** 12 (Overseas 9)

**Number of Employees (Consolidated):** 13,601 (As of March 31, 2010)

**Homepage:** <http://sfc.jp/english/>

**Independent Auditors:** Ernst & Young ShinNihon LLC

**Contact Information:** Sumitomo Forestry Co., Ltd.  
Corporate Communications Department  
Tel: 81-3-3214-2270  
Fax: 81-3-3214-2272

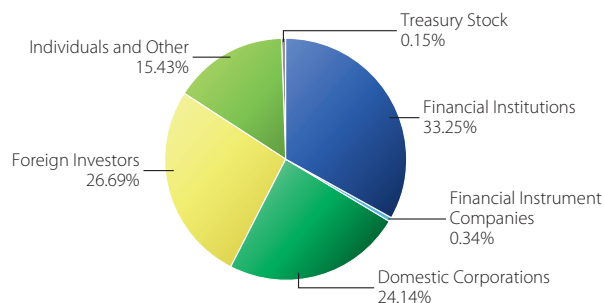
**Number of Shareholders:** 12,979 (As of March 31, 2010)

**Major Shareholders** (As of March 31, 2010):

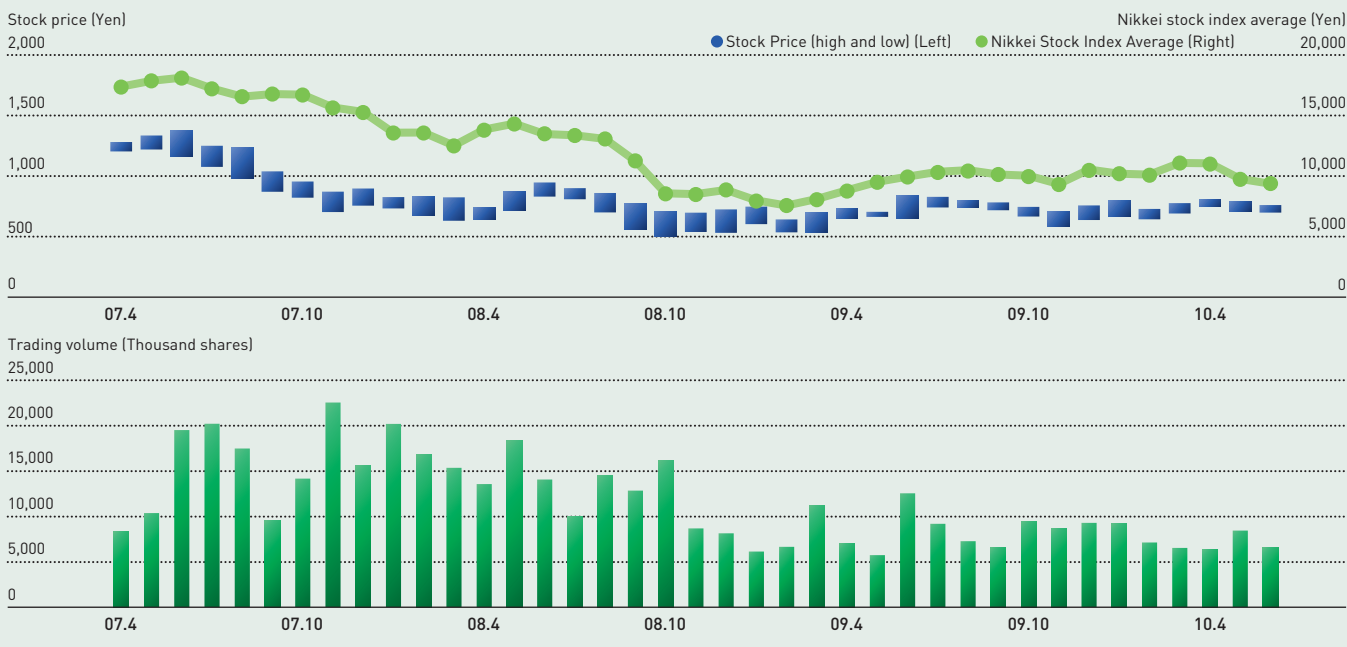
Shareholders	Number of shares held (Thousand shares)	Shareholding ratio (%)
Sumitomo Metal Mining Co., Ltd.	10,110	5.70
The Master Trust Bank of Japan, Ltd. (trust account)	8,003	4.51
Japan Trustee Service Bank, Ltd. (trust account)	6,278	3.54
The Iyo Bank, Ltd.	5,849	3.30
Sumitomo Corporation	4,383	2.47
Sumitomo Life Insurance Company	4,227	2.38
The Hyakujushi Bank, Ltd.	4,197	2.37
Sumitomo Mitsui Banking Corporation	4,136	2.33
Sumitomo Forestry Group Employees' Shareholding Association	3,597	2.03
The Sumitomo Trust and Banking Co., Ltd.	3,408	1.92

\* Number of shares held less than 1 thousand shares have been omitted.

**Breakdown of Shareholders** (As of March 31, 2010):



## Stock Price and Trading Volume (Osaka Securities Exchange):



## Forward-Looking Statements

Statements in this annual report with respect to Sumitomo Forestry's plans, strategies, objectives, forecasts, and other statements that are not historical facts are forward-looking statements based on management's assumptions and beliefs based on information available as of the production date of this report. Actual results may differ significantly from those discussed herein, owing to the impact of various factors, including but not limited to changes in the business environment, general economic conditions, and customer preferences.



Keidanren Kaikan, 3-2, Otemachi 1-chome,  
Chiyoda-ku, Tokyo 100-8270, Japan  
Tel: 81-3-3214-2270 Fax: 81-3-3214-2272  
URL: <http://sfc.jp/english/>