

Sumitomo Forestry Group Overview

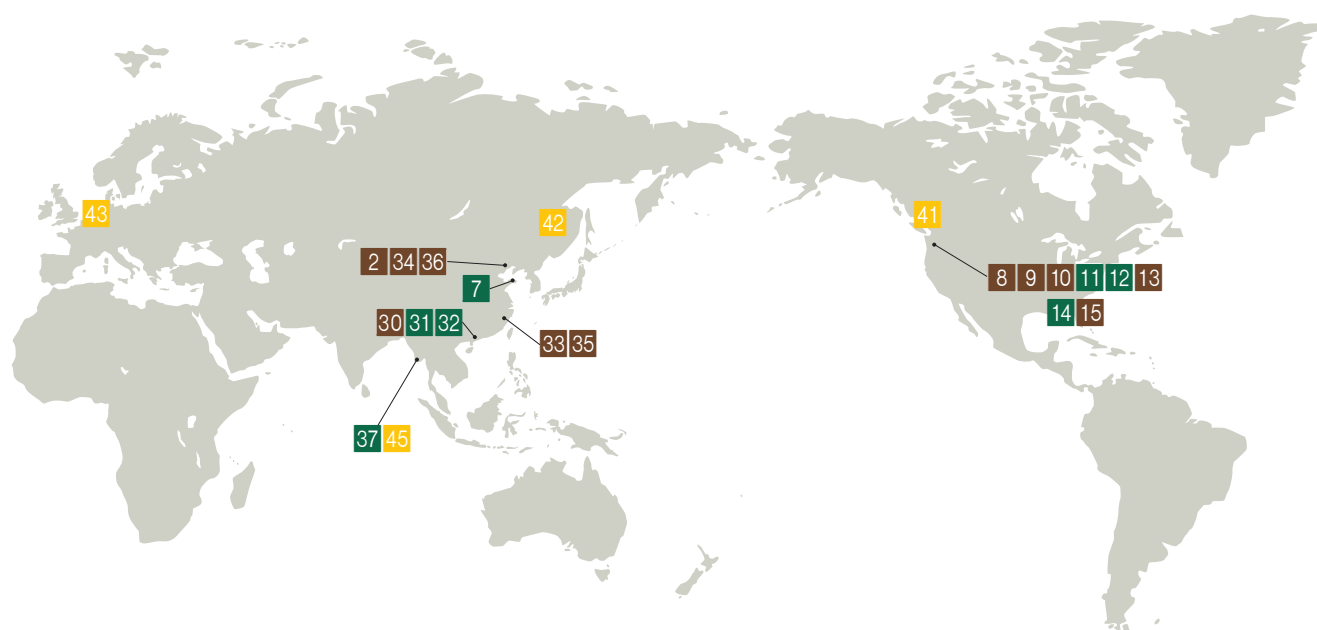
(As of March 31, 2015)

Domestic Group Companies

1 Sumitomo Forestry Wood Products Co., Ltd.	Forest management; various forestry businesses; procurement and sales of Japanese timber, etc.
2 Sumitomo Forestry Crest Co., Ltd.	Manufacture and sales of various types of plywood, building components for housing, furniture, etc.
3 Sumirin Sash Co., Ltd.	Secondary processing and sales of aluminum sashes; exterior finishing
4 Sumikyo Wintec Co., Ltd.	Secondary processing and sales of aluminum sashes; exterior finishing; sales of door and window sashes for housing and low- and mid-rise buildings
5 Sumikyo Co., Ltd.	Secondary processing and sales of aluminum sashes; exterior finishing
6 Igeto Co., Ltd.	Sales of housing materials and equipment
7 Daiichishansho Co., Ltd.	Sales of housing materials and equipment; interior and exterior finishing
8 Nihei Co., Ltd.	Sales of housing materials and equipment; ancillary work
9 Home Eco Logistics Co., Ltd.	Distribution services for housing materials
10 Nichiha Fuji Tech Co., Ltd.	Manufacture and sales of ceramics and construction materials
11 TOCLAS CORPORATION	Manufacture and sales of housing equipment
12 Sumitomo Forestry Home Service Co., Ltd.	Sales agent for land and housing
13 Sumitomo Forestry Residential Co., Ltd.	Management of condominiums and apartments
14 Sumitomo Forestry Home Tech Co., Ltd.	Renovation and maintenance of Sumitomo Forestry's custom-built wooden detached homes and renovation of regular detached houses, as well as condominiums
15 Sumitomo Forestry Landscaping Co., Ltd.	Urban greening; landscaping for private residences; plant rental, etc.
16 Sumitomo Forestry Home Engineering Co., Ltd.	Construction and construction supervision of Sumitomo Forestry's custom-built wooden detached homes
17 Sumitomo Forestry Archi Techno Co., Ltd.	CAD and CAM work, site surveys, analysis of foundation and application for housing performance evaluation for Sumitomo Forestry's custom-built wooden detached homes
18 Meikan Honchosha PFI Co., Ltd.	Redevelopment of headquarters, etc. of Nagoya Port Authority
19 Sumitomo Forestry Information Systems Co., Ltd.	Development of computer systems, etc.
20 Sumirin Enterprises Co., Ltd.	Various services for insurance agency, equipment leasing, office services (central purchasing and business contracting), etc.
21 Sumirin Business Service Co., Ltd.	Staffing business, training, business contracting
22 Sumirin Agro-Products Co., Ltd.	Production and sales of nursery compost, culture soil for gardening, soil conditioning materials fertilizer, etc.
23 Kawanokita Development Co., Ltd.	Management of the Takinomiya Country Club golf course
24 Fill Care Co., Ltd.	Management of nursing care facilities for senior citizens, etc.
25 Japan Bio Energy Holding Co., Ltd.	Supervision and management of wood chip supply companies
26 Japan Bio Energy Co., Ltd.	Intermediate processing of industrial waste products, and supply and sales of wood chips
27 Kawasaki Biomass Electric Power Co., Ltd.	Electric power generation using wood-chip biomass; wholesale of electric power
28 Okhotsk Bio Energy Co., Ltd.	Supply and sales of wood chips
29 Mombetsu Biomass Electric Power Co., Ltd.	Electric power generation using wood-chip biomass; wholesale of electric power
30 Hachinohe Biomass Electric Power Co., Ltd.	Electric power generation using wood-chip biomass; wholesale of electric power
31 Michinoku Bio Energy Co., Ltd.	Supply and sales of wood chips
32 Tomakomai Biomass Power Co., Ltd.	Electric power generation using wood-chip biomass; wholesale of electric power

Overseas Group Companies

1	PT. Sumitomo Forestry Indonesia (Indonesia)	Import/export and wholesale of timber and building materials, etc.
2	Sumitomo Forestry (Dalian) Ltd. (China)	Import/export and wholesale of timber and building materials, etc.
3	Sumitomo Forestry (Singapore) Ltd. (Singapore)	Import/export and wholesale of timber and building materials, etc.; supervision of the overseas distribution business
4	SF Holdings (Thailand) Co., Ltd. (Thailand)	Supervision and management of affiliated companies in Thailand
5	PAN ASIA PACKING LTD. (Thailand)	Manufacture and sales of packing materials and wood pellets; distribution and sales of timber building materials
6	Sumitomo Forestry (Vietnam) Co., Ltd. (Vietnam)	Import/export and wholesale of timber and building materials, etc.
7	Yantai Golden Bridge Enterprise Co., Ltd. (China)	Brokerage of rental housing
8	Sumitomo Forestry America, Inc. (U.S.A.)	Supervision and management of affiliated companies in U.S.A.
9	SFC Homes LLC (U.S.A.)	Construction and sales of spec homes
10	Canyon Creek Cabinet Company (U.S.A.)	Manufacture and sales of kitchen cabinets
11	Cascadia Resort Communities LLC (U.S.A.)	Land development and sales of housing lots
12	Creekstone Development LLC (U.S.A.)	Land development and sales of housing lots
13	Henley USA LLC (U.S.A.)	Construction and sales of spec homes
14	Bloomfield Homes, L.P. (U.S.A.)	Construction and sales of spec homes
15	Gehan Homes, Ltd. (U.S.A.)	Construction and sales of spec homes
16	Sumitomo Forestry Australia Pty Ltd. (Australia)	Supervision and management of affiliated companies in Australia
17	Alpine MDF Industries Pty Ltd. (Australia)	Manufacture and sales of medium density fiberboard (MDF)
18	Grices Road Management Pty Ltd. (Australia)	Land development and sales of housing lots
19	SPJR Land Developments Pty Ltd. (Australia)	Land development and sales of housing lots
20	Henley Arch Unit Trust (Australia)	Construction and sales of custom-built homes and spec homes
21	Henley Arch Pty Ltd. (Australia)	Construction and sales of custom-built homes and spec homes

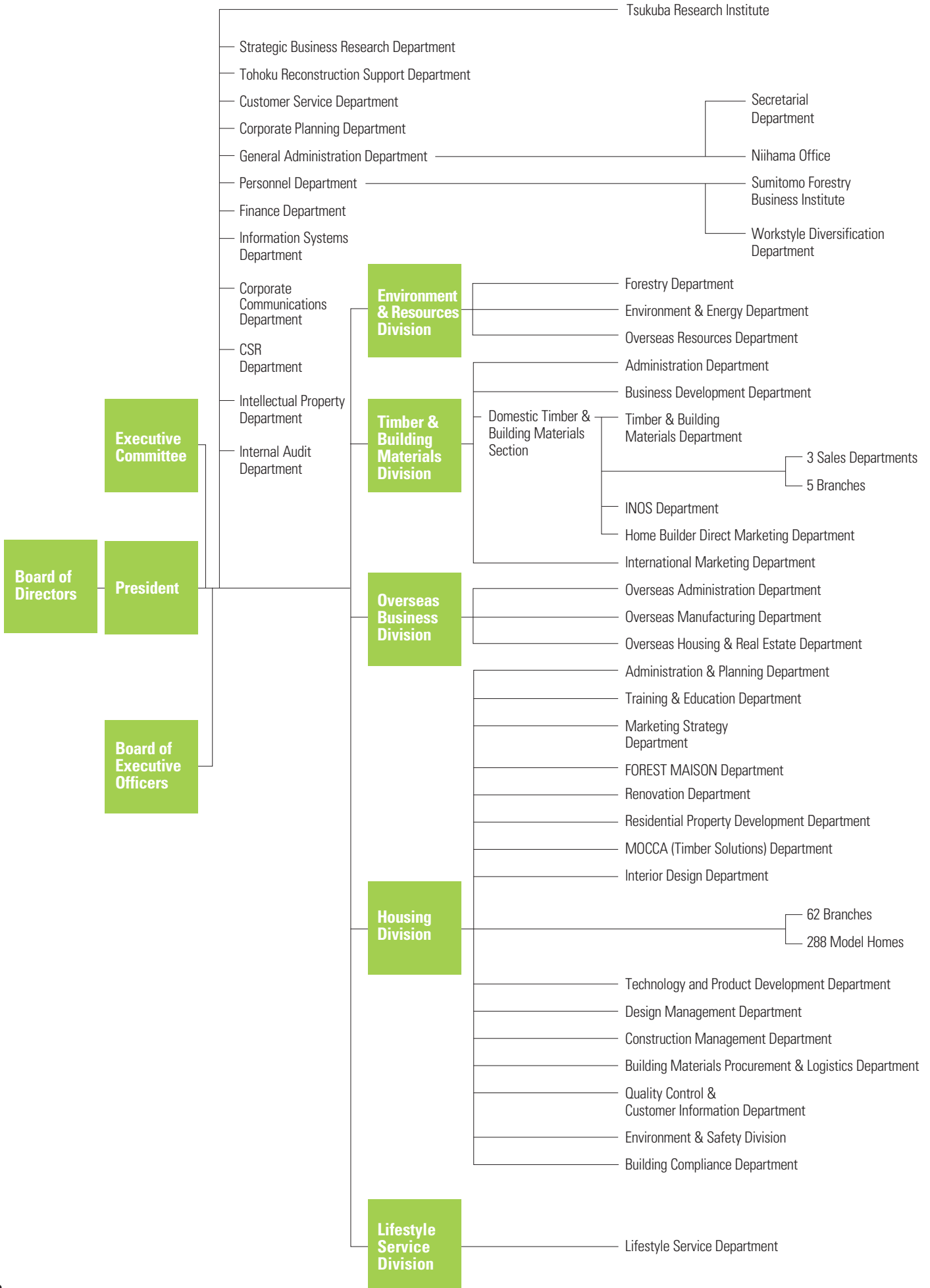


22 Edgewater Homes Pty Ltd. (Australia)	Construction and sales of spec homes
23 Sumitomo Forestry NZ Ltd. (New Zealand)	Supervision and management of affiliated companies in New Zealand
24 Nelson Pine Industries Ltd. (New Zealand)	Manufacture and sales of medium density fiberboard (MDF), veneer and laminated veneer lumber (LVL)
25 PT. Kutai Timber Indonesia (Indonesia)	Manufacture and sales of plywood, secondary processed plywood, processed timber building materials and particle board
26 PT. Rimba Partikel Indonesia (Indonesia)	Manufacture and sales of particle board
27 PT. Sinar Rimba Pasifik (Indonesia)	Manufacture and sales of wooden interior products
28 PT. AST Indonesia (Indonesia)	Manufacture and sales of materials for musical instruments and wooden building materials
29 Vina Eco Board Co., Ltd. (Vietnam)	Manufacture and sales of particle board
30 SUMIRIN HONG KONG LIMITED (Hong Kong)	Supervision and management of affiliated companies in Hong Kong
31 Partner Ally Limited (Hong Kong)	Development condominium complexes
32 Rainbow Alpha Holdings Limited (Hong Kong)	Development condominium complexes
33 Sumitomo Forestry (Shanghai) Ltd. (China)	Supervision and management of housing business in China
34 Paragon Wood Product (Dalian) Co., Ltd. (China)	Design and construction of wooden housing; interior design and construction of housing and offices
35 Paragon Wood Product (Shanghai) Co., Ltd. (China)	Interior design and construction of housing and office
36 Dalian Sumirin Information Technology Service Co., Ltd. (China)	CAD work and other business processing
37 MOS Lumber Products Co., Ltd. (Myanmar)	Manufacture and sales of processed products
38 Open Bay Timber Ltd. (Papua New Guinea)	Afforestation; log harvesting and sales
39 PT. Mayangkara Tanaman Industri (Indonesia)	Afforestation; log harvesting and sales
40 PT. Wana Subur Lestari (Indonesia)	Afforestation; log harvesting and sales



Organization Chart

(As of April 1, 2015)



Investor Information

■ Company Outline (As of March 31, 2015)

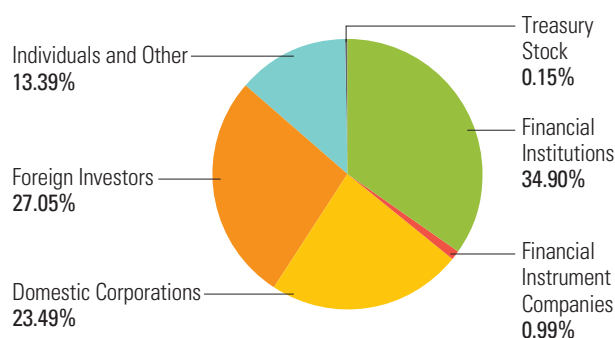
Company Name	Sumitomo Forestry Co., Ltd.
Founded	1691
Incorporated	1948
Paid-in Capital	¥27,672 million
Stock Exchange Listing	Tokyo
Total Number of Authorized Shares	400,000,000
Total Number of Shares Issued	177,410,239
Ordinary Shareholders' Meeting	June
Number of Shareholders	10,685
Head Office	Keidanren Kaikan, 3-2, Otemachi 1-chome, Chiyoda-ku, Tokyo 100-8270, Japan
Consolidated Subsidiaries	72 (Overseas 43)
Affiliated Companies	21 (Overseas 17)
Number of Employees (Consolidated)	18,137
Homepage	http://sfc.jp/english/
Independent Auditors	Ernst & Young ShinNihon LLC
Contact Information	Sumitomo Forestry Co., Ltd. Corporate Communications Department IR Team Tel : 81-3-3214-2270 Fax: 81-3-3214-2272

■ Major Shareholders (As of March 31, 2015)

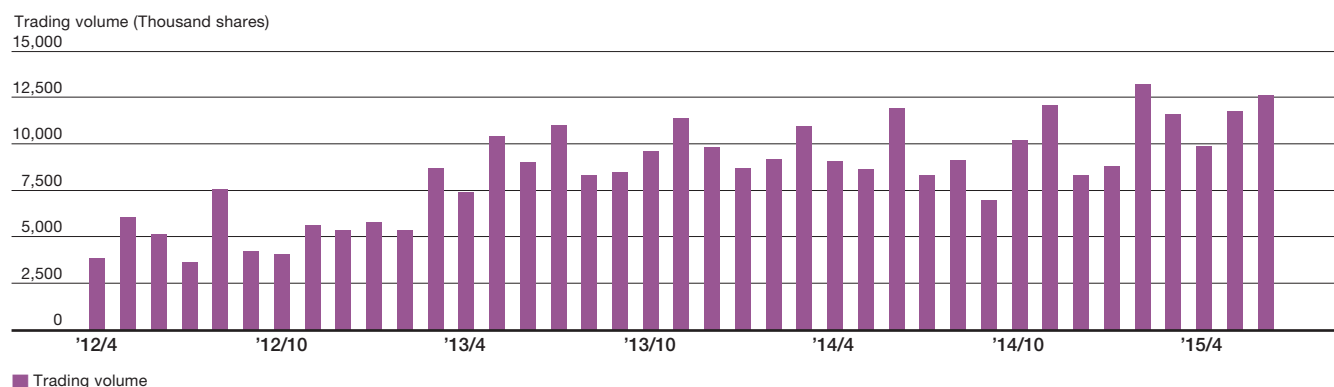
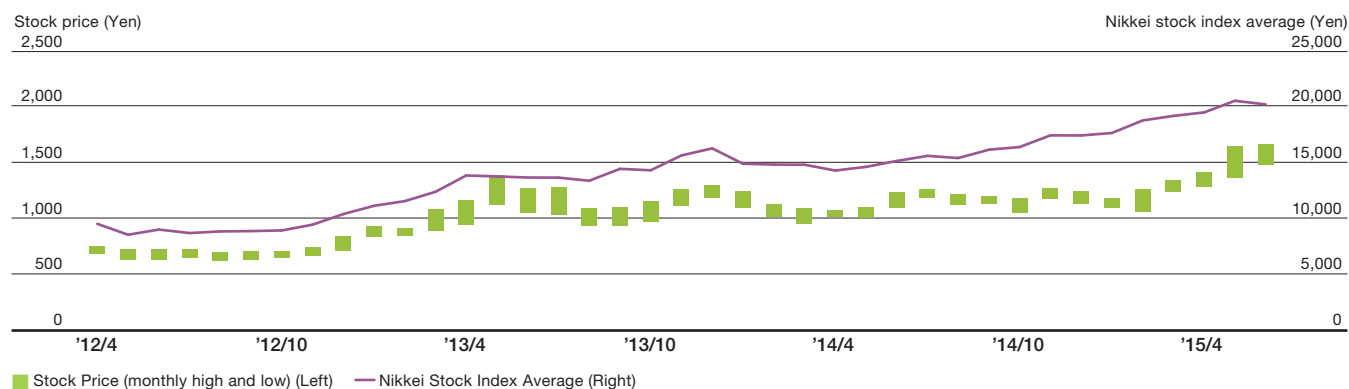
Shareholders	Number of shares held (Thousand shares)*	Shareholding ratio (%)
Sumitomo Metal Mining Co., Ltd.	10,110	5.69
The Master Trust Bank of Japan, Ltd. (trust account)	8,483	4.78
The Iyo Bank, Ltd.	5,849	3.29
Japan Trustee Services Bank, Ltd. (trust account)	5,187	2.92
Sumitomo Corporation	4,383	2.47
Sumitomo Life Insurance Company	4,227	2.38
The Hyakujushi Bank, Ltd.	4,197	2.36
Sumitomo Mitsui Banking Corporation	4,136	2.33
Sumitomo Mitsui Trust Bank, Limited	3,408	1.92
JUNIPER	3,354	1.89

* Rounded down to the nearest thousand.

■ Breakdown of Shareholders (As of March 31, 2015)



■ Stock Price and Trading Volume



Note: Following the integration of the Osaka Securities Exchange into the Tokyo Stock Exchange on July 16, 2013, the above graph uses the stock price of the Tokyo Stock Exchange, and the combined trading volumes of the Osaka Securities Exchange and the Tokyo Stock Exchange before the integration.



 **SUMITOMO FORESTRY CO.,LTD.**

Corporate Communications Department IR Team
Keidanren Kaikan, 3-2, Otemachi 1-chome,
Chiyoda-ku, Tokyo 100-8270, Japan
Tel: 81-3-3214-2270 Fax: 81-3-3214-2272
URL: <http://sfc.jp/english/>