

2013年3月期 第2四半期 業績説明会資料

 住友林業株式会社

 SUMITOMO FORESTRY CO.,LTD.

Financial Factbook

Interim of Fiscal Year Ended March 31, 2013

本資料における予想数値は現時点での予測に基づいており、実際の業績はこれら予想と異なる結果となる場合があります。

The estimated figures on this factbook is based on the present speculation. Therefore the actual results could differ from the estimates.

目次

Index



財務データ

Financial Section

・ 新設住宅着工戸数の推移	Numbers of New Housing Starts in Japan	3
・ 業績の推移	Business Results	4
・ セグメント業績の推移(新セグメント)	Business Results by New segment	5
・ セグメント業績の推移(旧セグメント)	Business Results by Previous segment	6
・ 経営指標	Financial Analysis	7
・ 連結貸借対照表	Consolidated Balance Sheets	8
・ 連結損益計算書	Consolidated Statements of Income	10
・ 連結キャッシュ・フロー計算書	Consolidated Statements of Cash Flows	11
・ 設備投資	Capital Expenditures	12
・ 受注の状況	The State of Orders	13
・ 販売の状況	The State of Sales	14

参考データ

Reference Data

・ 戸建注文住宅 1棟当たり平均データ	Average Data of Custom-built Detached House	16
・ 戸建注文住宅 参考指標	Reference Data of Custom-built Detached House	17
・ 戸建注文住宅 地域別受注棟数構成	Custom-built Detached House Orders by Region	18
・ 戸建注文住宅 階層別棟数構成	Ratio by the number of stories for Custom-built Detached Houses	19
・ 木材・建材 商品別売上高(単体)	Timber and Building Materials Sales by Product Category (Non-Consolidated)	20
・ 木材・建材 市況	Market Data of Timber and Building Materials	21
・ リフォーム事業と不動産流通事業の状況	Renovation business and Real Estate Brokerage	22
・ 人員構成表	Number of Employees	23
・ 株式分布状況表	The State of Share Distribution	24
・ 退職給付に係る数理差異の推移	Actuarial Difference Regarding Employees' Retirement Benefit Obligation	25

財務データ

Financial Section

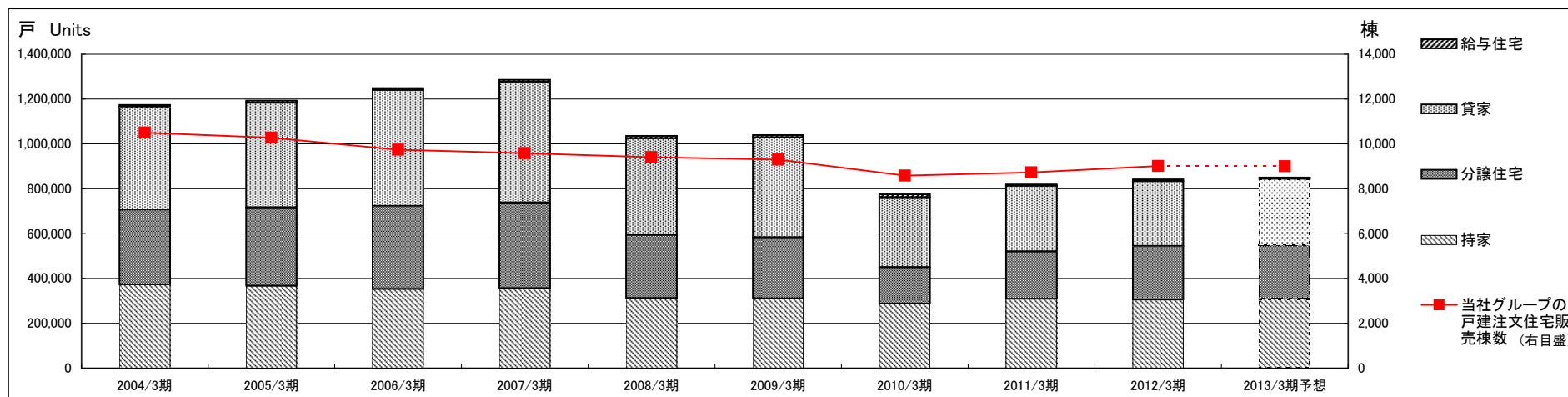
新設住宅着工戸数の推移

Numbers of New Housing Starts in Japan



Fiscal Years Ended March 31	(戸・Units)										(戸・Units)	
	2004/3期	2005/3期	2006/3期	2007/3期	2008/3期	2009/3期	2010/3期	2011/3期	2012/3期	2013/3期予想 Forecast	2012/3期 中間 Interim of Fiscal Year	2013/3期 中間 Interim of Fiscal Year
持家 Owner-occupied Houses	373,015	367,233	352,577	355,700	311,803	310,664	286,993	308,517	304,822	308,000	162,412	161,247
分譲住宅 Built for Sale Houses	333,825	349,044	370,275	382,503	282,617	272,680	163,590	212,083	239,086	242,000	118,766	121,457
貸家 Rented Houses	458,708	467,348	517,999	537,943	430,867	444,747	311,463	291,840	289,762	293,000	147,210	156,503
給与住宅 Corporate Houses	8,101	9,413	8,515	9,100	10,311	11,089	13,231	6,580	7,576	7,000	4,372	3,741
合計 Total	1,173,649	1,193,038	1,249,366	1,285,246	1,035,598	1,039,180	775,277	819,020	841,246	850,000	432,760	442,948
当社グループの戸建注文住宅販売棟数 Sumitomo Forestry Group*	10,496	10,275	9,739	9,585	9,408	9,297	8,580	8,721	9,007	9,000	4,076	4,037
持家着工戸数に対する当社グループのシェア Market Share in Owner-occupied Houses	2.81%	2.80%	2.76%	2.69%	3.02%	2.99%	2.99%	2.83%	2.95%	2.92%	2.51%	2.50%

* Number of Custom-built Detached House constructed by Sumitomo Forestry Group



「2013/3期 予想」は各種シンクタンクの予想を基に当社が予想したものです。

“2013 Forecast” is calculated based on some forecasts by think tanks.

業績の推移

Business Results



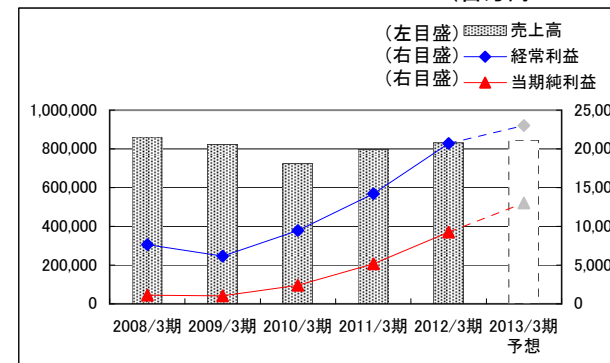
(連結 Consolidated)

Fiscal Years Ended/Ending March 31	2008/3期	2009/3期	2010/3期	2011/3期	2012/3期	2013/3期 予想 Forecast
売上高 Net Sales	861,357	823,810	723,923	797,493	831,870	845,000
営業利益 Operating Income	7,235	6,837	9,747	14,238	19,191	22,500
経常利益 Recurring Income	7,659	6,160	9,465	14,206	20,714	23,000
当期純利益 Net Income	1,115	1,028	2,377	5,175	9,271	13,000

(百万円・¥Million)

2012/3期 中間 Interim of Fiscal Year	2013/3期 中間 Interim of Fiscal Year
395,091	392,147
9,414	6,839
9,760	7,485
5,645	3,608

(百万円・¥Million)



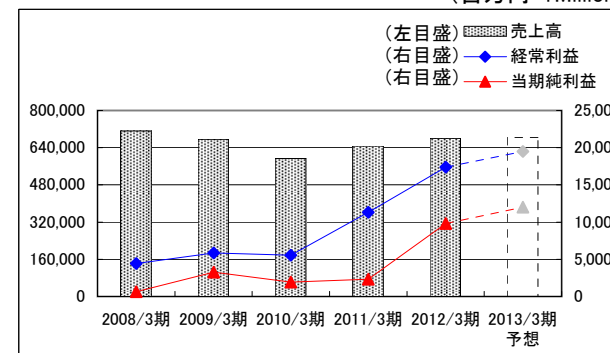
(単体 Non-Consolidated)

Fiscal Years Ended/Ending March 31	2008/3期	2009/3期	2010/3期	2011/3期	2012/3期	2013/3期 予想 Forecast
売上高 Net Sales	712,313	675,968	593,243	647,515	680,189	685,000
営業利益 Operating Income	1,607	3,175	3,525	8,299	13,713	16,500
経常利益 Recurring Income	4,431	5,852	5,560	11,304	17,383	19,500
当期純利益 Net Income	624	3,264	1,936	2,329	9,791	12,000

(百万円・¥Million)

2012/3期 中間 Interim of Fiscal Year	2013/3期 中間 Interim of Fiscal Year
323,085	315,201
6,779	4,943
9,292	7,834
6,465	4,870

(百万円・¥Million)



セグメント業績の推移(新セグメント)

Business Results by New segment

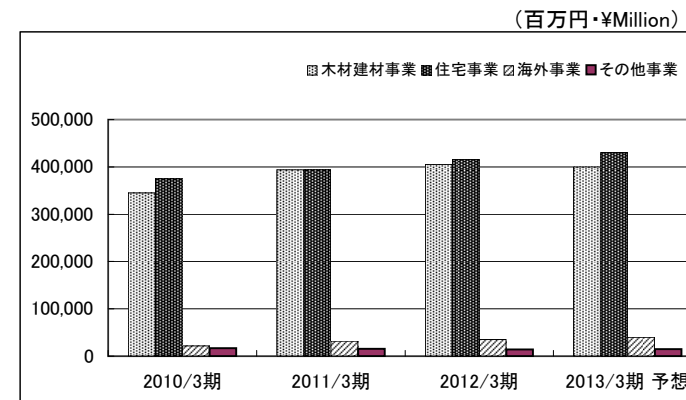


<新セグメント>

New segment

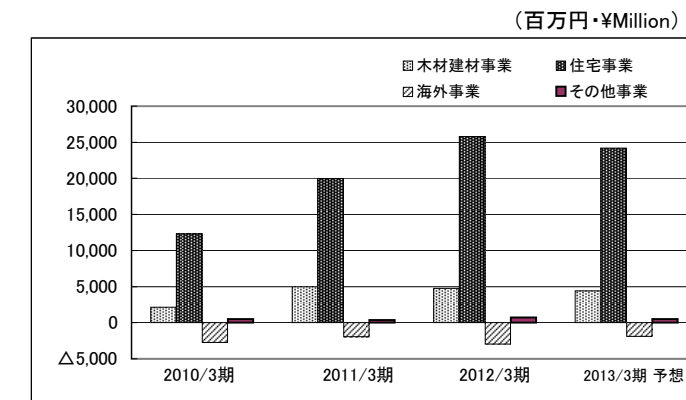
(売上高 Sales by Segment)

Fiscal Years Ended/Ending March 31	(百万円・¥Million)				(百万円・¥Million)	
	2010/3期	2011/3期	2012/3期	2013/3期 予想 Forecast	2012/3期 中間 Interim of Fiscal Year	2013/3期 中間 Interim of Fiscal Year
木材建材事業 Timber & Building Materials	345,373	394,073	405,350	400,000	202,966	194,527
住宅事業 Housing Business	374,663	393,608	415,098	430,000	186,998	191,872
海外事業 Overseas Business	21,735	31,735	34,971	40,000	16,433	18,724
その他事業 Others	16,973	15,338	14,049	15,000	6,862	7,388
調整 Adjustment	△34,821	△37,260	△37,599	△40,000	△18,168	△20,364
合計 Total	723,923	797,493	831,870	845,000	395,091	392,147



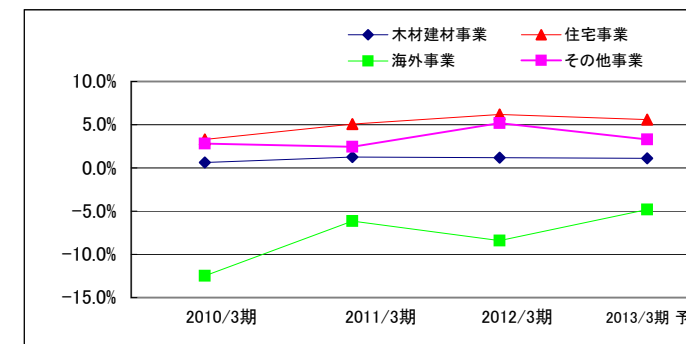
(経常利益 Recurring Income by Segment)

Fiscal Years Ended/Ending March 31	(百万円・¥Million)				(百万円・¥Million)	
	2010/3期	2011/3期	2012/3期	2013/3期 予想 Forecast	2012/3期 中間 Interim of Fiscal Year	2013/3期 中間 Interim of Fiscal Year
木材建材事業 Timber & Building Materials	2,140	4,968	4,781	4,400	2,671	1,929
住宅事業 Housing Business	12,312	19,981	25,800	24,200	8,691	7,226
海外事業 Overseas Business	△2,716	△1,949	△2,938	△1,900	△848	△881
その他事業 Others	480	375	728	500	308	358
調整 Adjustment	△2,750	△9,169	△7,655	△4,200	△1,062	△1,146
合計 Total	9,465	14,206	20,714	23,000	9,760	7,485



(経常利益率 Recurring Income margin by Segment)

Fiscal Years Ended/Ending March 31	(%)				(%)	
	2010/3期	2011/3期	2012/3期	2013/3期 予想 Forecast	2012/3期 中間 Interim of Fiscal Year	2013/3期 中間 Interim of Fiscal Year
木材建材事業 Timber & Building Materials	0.6%	1.3%	1.2%	1.1%	1.3%	1.0%
住宅事業 Housing Business	3.3%	5.1%	6.2%	5.6%	4.6%	3.8%
海外事業 Overseas Business	△12.5%	△6.1%	△8.4%	△4.8%	△5.2%	△4.7%
その他事業 Others	2.8%	2.4%	5.2%	3.3%	4.5%	4.8%
調整 Adjustment	-	-	-	-	-	-
合計 Total	1.3%	1.8%	2.5%	2.7%	2.5%	1.9%



※2010/3期、2011/3期、2012/3期のセグメント別内訳は、旧セグメントの実績を新セグメントに組みかえた参考値です。

※For the year ended March 31, 2010, 2011 and 2012, figures by new segments are calculated from the results of old segments for reference only

セグメント業績の推移(旧セグメント)

Business Results by Previous segment



<旧セグメント(2008/3期~2010/3期)>

Previous segment (FY Ending March 31 2008~2010)

(売上高 Sales by Segment)

(百万円・¥Million)

Fiscal Years Ended/Ending March 31	2008/3期	2009/3期	2010/3期	2010/3期 中間 Interim of Fiscal Year
木材・建材事業 Timber & Building Materials	470,945	433,648	361,812	174,404
住宅及び住宅関連事業 Housing & Housing-related Businesses	407,687	406,351	375,658	168,479
その他 Others	15,734	16,054	15,871	7,924
消去又は全社 Elimination and/or Corporate	△33,009	△32,243	△29,419	△14,048
合計 Total	861,357	823,810	723,923	336,759

(営業利益 Operating Income by Segment)

(百万円・¥Million)

Fiscal Years Ended/Ending March 31	2008/3期	2009/3期	2010/3期	2010/3期 中間 Interim of Fiscal Year
木材・建材事業 Timber & Building Materials	3,330	2,054	913	△414
住宅及び住宅関連事業 Housing & Housing-related Businesses	8,797	8,447	13,744	1,047
その他 Others	969	936	913	410
消去又は全社 Elimination and/or Corporate	△5,860	△4,599	△5,823	△2,188
合計 Total	7,235	6,837	9,747	△1,145

(営業利益率 Operating Income margin by Segment)

Fiscal Years Ended/Ending March 31	2008/3期	2009/3期	2010/3期	2010/3期 中間 Interim of Fiscal Year
木材・建材事業 Timber & Building Materials	0.7%	0.5%	0.3%	△0.2%
住宅及び住宅関連事業 Housing & Housing-related Businesses	2.2%	2.1%	3.7%	0.6%
その他 Others	6.2%	5.8%	5.8%	5.2%
消去又は全社 Elimination and/or Corporate	-	-	-	-
合計 Total	0.8%	0.8%	1.3%	△0.3%

<旧セグメント(2010/3期~2012/3期)>

Previous segment (FY Ending March 31 2010~2012)

(売上高 Sales by Segment)

(百万円・¥Million)

Fiscal Years Ended/Ending March 31	2010/3期	2011/3期	2012/3期
木材建材事業 Timber & Building Materials	341,432	390,231	399,794
海外事業 Overseas Business	25,472	33,234	37,595
住宅事業 Housing Business	338,295	346,279	374,719
不動産事業 Real Estate business	38,169	50,881	44,240
その他事業 Others	15,171	13,529	12,064
調整 Adjustment	△34,617	△36,662	△36,542
合計 Total	723,923	797,493	831,870

2011/3期 中間 Interim of Fiscal Year	2012/3期 中間 Interim of Fiscal Year
190,200	200,596
15,887	17,369
153,053	168,999
26,544	19,766
6,753	5,922
△18,517	△17,562
373,921	395,091

(経常利益 Recurring Income by Segment)

(百万円・¥Million)

Fiscal Years Ended/Ending March 31	2010/3期	2011/3期	2012/3期
木材建材事業 Timber & Building Materials	2,006	4,848	4,667
海外事業 Overseas Business	△2,582	△1,829	△2,853
住宅事業 Housing Business	13,250	18,988	24,621
不動産事業 Real Estate business	△1,042	903	1,193
その他事業 Others	583	502	709
調整 Adjustment	△2,750	△9,206	△7,622
合計 Total	9,465	14,206	20,714

2011/3期 中間 Interim of Fiscal Year	2012/3期 中間 Interim of Fiscal Year
2,244	2,631
△402	△808
4,831	8,562
518	92
241	327
△2,338	△1,043
5,094	9,760

(経常利益率 Recurring Income margin by Segment)

Fiscal Years Ended/Ending March 31	2010/3期	2011/3期	2012/3期
木材建材事業 Timber & Building Materials	0.6%	1.2%	1.2%
海外事業 Overseas Business	△10.1%	△5.5%	△7.6%
住宅事業 Housing Business	3.9%	5.5%	6.6%
不動産事業 Real Estate business	△2.7%	1.8%	2.7%
その他事業 Others	3.8%	3.7%	5.9%
調整 Adjustment	-	-	-
合計 Total	1.3%	1.8%	2.5%

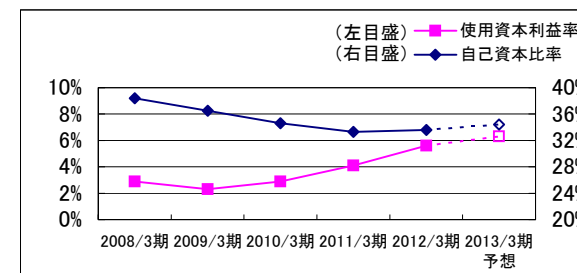
2011/3期 中間 Interim of Fiscal Year	2012/3期 中間 Interim of Fiscal Year
1.2%	1.3%
△2.5%	△4.7%
3.2%	5.1%
2.0%	0.5%
3.6%	5.5%
-	-
1.4%	2.5%

経営指標

Financial Analysis

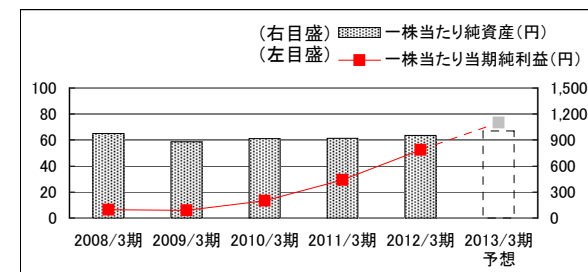
(経営指標 Financial Analysis)

Fiscal Years Ended/Ending March 31	2008/3期	2009/3期	2010/3期	2011/3期	2012/3期	2013/3期 予想 Forecast	2012/3期 中間 Interim of Fiscal Year	2013/3期 中間 Interim of Fiscal Year
自己資本当期純利益率 Return on Equity	0.6%	0.6%	1.5%	3.2%	5.6%	7.5%	3.4%	2.1%
使用資本利益率 Return on Capital Employed	2.9%	2.3%	2.9%	4.1%	5.6%	6.3%	2.7%	2.1%
自己資本比率 Equity ratio	38.4%	36.5%	34.6%	33.3%	33.6%	34.4%	33.1%	33.3%



(一株当たり情報 Per Share Data)

Fiscal Years Ended/Ending March 31	2008/3期	2009/3期	2010/3期	2011/3期	2012/3期	2013/3期 予想 Forecast	2012/3期 中間 Interim of Fiscal Year	2013/3期 中間 Interim of Fiscal Year
一株当たり当期純利益(円) Net Income per Share (¥)	6.29	5.80	13.42	29.21	52.34	73.39	31.87	20.37
一株当たり純資産(円) Shareholders' Equity per Share (¥)	975.99	880.94	917.82	919.54	954.81	1,005.10	940.20	957.48



連結貸借対照表

Consolidated Balance Sheets



(資産の部 Total Assets)

(百万円・¥Million)

Fiscal Years Ended March 31		2008/3期	2009/3期	2010/3期	2011/3期	2012/3期	2013/3期 中間 Interim of Fiscal Year
現金及び預金	Cash and Time Deposits	39,591	23,854	52,714	55,618	64,870	73,540
受取手形及び売掛金	Notes and Accounts Receivable-Trade	115,668	106,167	102,355	112,427	120,536	115,559
完成工事未収入金	Accounts Receivable-Contract	4,640	4,889	5,071	6,024	4,347	3,024
有価証券	Marketable Securities	15,000	17,194	19,000	20,000	15,000	16,000
商品	Finished Goods, Logs and Lumber	22,985	20,506	17,230	19,015	20,977	20,324
販売用不動産	Developed Land and Housing for Sale	14,865	21,593	26,333	31,492	34,880	30,409
未成工事支出金	Land and Housing Projects in Progress	27,760	30,119	32,420	31,242	28,397	33,529
繰延税金資産	Deferred Income Taxes	5,588	6,647	6,308	7,915	7,971	8,471
短期貸付金	Short-term Loans Receivable	2,400	3,656	859	1,204	4,759	5,404
未収入金	Other Receivables	44,962	39,682	42,599	45,513	43,471	44,773
その他	Others	4,187	4,668	3,719	4,260	5,052	5,041
貸倒引当金	Allowance for Doubtful Accounts	△631	△740	△836	△1,272	△1,329	△1,325
流動資産	Current Assets	297,014	278,237	307,772	333,439	348,930	354,747
有形固定資産	Tangible Fixed Assets	79,921	88,146	88,870	87,602	85,641	85,411
無形固定資産	Intangible Fixed Assets	6,423	6,439	6,637	7,068	8,390	8,417
投資その他の資産	Investments and Other Assets	67,371	54,916	66,459	61,309	60,534	61,080
固定資産	Non-Current Assets	153,715	149,502	161,966	155,978	154,566	154,908
資産合計	Total Assets	450,730	427,738	469,738	489,417	503,496	509,655

※過去の数値に関しては、現行の会計基準に沿って修正しております。

*The figures in past fiscal years on this B/S are revised under the new financial accounting standards.

※譲渡性預金は2008年より「有価証券」として表示しております。

*Negotiable Certificate of Deposits is included in "Marketable Securities" from Fiscal Year 2008.

連結貸借対照表

Consolidated Balance Sheets



(負債、及び純資産合計 Total Liabilities and Total Net Assets)

(百万円・¥Million)

Fiscal Years Ended March 31		2008/3期	2009/3期	2010/3期	2011/3期	2012/3期	2013/3期 中間 Interim of Fiscal Year	
	支払手形及び買掛金	Notes and Accounts Payable-Trade	83,346	74,119	86,553	93,018	98,076	98,159
	工事未払金	Accounts Payable-Contract	64,852	52,828	61,029	57,143	57,349	56,177
	短期借入金	Short-term Debt (Bank Loans)	17,405	10,619	12,323	18,588	20,761	20,069
	未払法人税等	Accrued Income Taxes	3,012	1,307	2,205	6,909	5,749	3,498
	未成工事受入金	Advances Received from Customers	40,378	34,028	31,077	37,524	38,567	48,920
	賞与引当金	Provision for Employee's Bonuses	7,679	7,490	7,372	8,316	9,026	8,885
	完成工事補償引当金	Provision for Guarantee for After-cost of Construction	1,327	1,308	1,256	2,007	1,843	1,688
	その他	Others	14,859	14,838	17,619	20,270	23,050	19,692
	流動負債	Current Liabilities	232,858	196,537	219,434	243,774	254,421	257,089
	社債	Long-term Debt (Bonds)	-	-	15,000	15,000	15,000	15,000
	長期借入金	Long-term Debt (Bank Loans)	8,411	36,145	36,008	32,101	28,284	31,153
	繰延税金負債	Deferred Income Taxes	6,377	2,989	9,358	8,782	7,316	6,329
	退職給付引当金	Provision for Retirement Benefits for Employees	15,063	18,414	5,390	6,152	10,033	10,089
	役員退職慰労引当金	Provision for Retirement Benefits for Directors and Corporate Auditors	161	139	164	61	81	78
	その他	Others	14,772	17,322	21,454	20,436	19,025	19,513
	固定負債	Long-term Liabilities	44,784	75,009	87,374	82,532	79,740	82,163
	負債の部	Total Liabilities	277,641	271,546	306,808	326,307	334,161	339,251
	資本金	Common Stock	27,672	27,672	27,672	27,672	27,672	27,672
	資本剰余金	Capital Surplus	26,876	26,872	26,872	26,872	26,872	26,872
	利益剰余金	Retained Earnings	107,198	105,346	105,066	107,584	114,223	116,502
	自己株式	Treasury Stock	△249	△260	△262	△267	△268	△268
	株主資本合計	Total Shareholders' Equity	161,497	159,630	159,348	161,861	168,499	170,778
	その他有価証券評価差額金	Unrealized Gain on Available-for-Sale Securities	9,085	2,359	5,594	4,876	5,734	3,313
	繰延ヘッジ損益	Deferred Gains or Losses on Hedges	59	29	24	154	192	1
	為替換算調整勘定	Foreign Currency Translation Adjustments	2,278	△5,961	△2,378	△4,005	△5,291	△4,486
	その他の包括利益累計額	Accumulated Other Comprehensive income	11,422	△3,572	3,241	1,025	634	△1,171
	少数株主持分	Minority Interest	169	135	342	224	202	798
	純資産合計	Total Net Assets	173,089	156,192	162,930	163,110	169,335	170,404
	負債及び純資産合計	Total Liabilities and Total Net Assets	450,730	427,738	469,738	489,417	503,496	509,655

過去の数値に関しては、現行の会計基準に沿って修正しております。

The figures in past fiscal years on this B/S are revised under the new financial accounting standards.

連結損益計算書

Consolidated Statements of Income



(百万円・¥Million)

Fiscal Years Ended/Ending March 31	2008/3期	2009/3期	2010/3期	2011/3期	2012/3期	2013/3期 予想 Forecast	2012/3期 中間 Interim of Fiscal Year	2013/3期 中間 Interim of Fiscal Year
売上高 Net Sales	861,357	823,810	723,923	797,493	831,870	845,000	395,091	392,147
売上総利益 Gross Income	利益率 15.7% 135,277	16.2% 133,493	17.2% 124,269	16.6% 132,568	16.5% 136,873	16.6% 140,500	16.1% 63,580	16.1% 63,133
販売費及び一般管理費 Selling, General and Administrative Expenses	128,041	126,656	114,522	118,330	117,682	118,000	54,166	56,295
営業利益 Operating Income	利益率 0.8% 7,235	0.8% 6,837	1.3% 9,747	1.8% 14,238	2.3% 19,191	2.7% 22,500	2.4% 9,414	1.7% 6,839
営業外収益 Other Income	3,728	3,812	4,147	3,425	4,219	3,000	1,973	1,948
営業外費用 Other Expenses	3,305	4,489	4,429	3,458	2,695	2,500	1,627	1,301
営業外損益 Other Income/Expenses	424	△ 677	△ 282	△ 32	1,524	500	346	647
経常利益 Recurring Income	利益率 0.9% 7,659	0.7% 6,160	1.3% 9,465	1.8% 14,206	2.5% 20,714	2.7% 23,000	2.5% 9,760	1.9% 7,485
特別利益 Special Gains	2,401	166	4,346	767	455	100	273	98
特別損失 Special Losses	4,459	4,361	3,228	3,964	3,487	600	236	686
特別損益 Special Gains/Losses	△ 2,058	△ 4,196	1,118	△ 3,196	△ 3,032	△ 500	37	△ 589
当期純利益 Net Income	利益率 0.1% 1,115	0.1% 1,028	0.3% 2,377	0.6% 5,175	1.1% 9,271	1.5% 13,000	1.4% 5,645	0.9% 3,608

連結キャッシュ・フロー計算書

Consolidated Statements of Cash Flows



(百万円・¥Million)

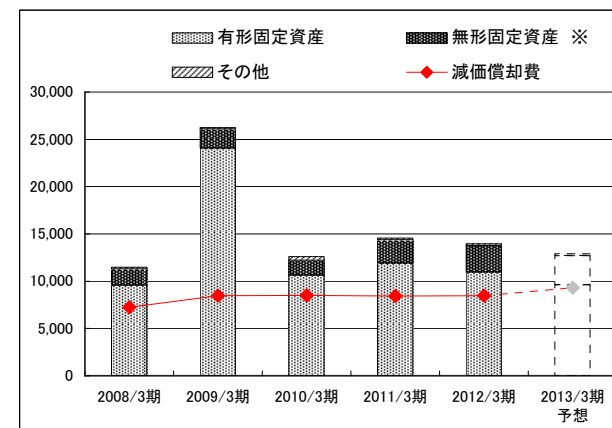
Fiscal Years Ended March 31		2008/3期	2009/3期	2010/3期	2011/3期	2012/3期	2012/3期 中間 Interim of Fiscal Year	2013/3期 中間 Interim of Fiscal Year
営業活動によるキャッシュ・フロー	Cash Flows from Operating Activities	26,106	△8,161	37,239	17,515	26,873	7,467	16,166
有価証券の取得／売却	Marketable Securities	-	-	295	-	-	-	-
有形固定資産の取得／売却	Tangible Fixed Assets	△9,294	△20,947	△8,354	△9,918	△7,875	△4,352	△821
無形固定資産の取得／売却	Intangible Fixed Assets	△1,633	△1,968	△1,578	△2,453	△2,782	△692	△837
投資有価証券の取得／売却	Investment Securities	△336	△1,081	△10,787	△986	△706	△110	△193
その他	Others	△6,324	△5,066	1,307	110	△21,539	△8,111	△14,856
投資活動によるキャッシュ・フロー	Cash Flows from Investment Activities	△17,587	△29,062	△19,117	△13,247	△32,903	△13,265	△16,707
短期借入金純増減額	Short-term Borrowings	△2,896	1,467	880	1,094	3,280	1,020	△1,325
長期借入金純増減額	Long-term Borrowings	1,753	25,616	△986	3,204	△4,498	△2,453	2,965
社債純増減額	Bonds	△160	-	15,000	-	-	-	-
配当金の支払額	Dividends Paid	△2,835	△2,658	△2,657	△2,657	△2,657	△1,329	△1,329
その他	Others	△123	△229	△691	△1,269	△1,747	△829	△208
財務活動によるキャッシュ・フロー	Cash Flows from Financing Activities	△4,262	24,196	11,546	372	△5,622	△3,591	103
現金及び現金同等物に係る換算差額	Effect of Exchange Rate Changes	△93	△717	1,205	△721	△90	222	116
現金及び現金同等物の増減額	Net Increase(Decrease) in Cash and Cash Equivalents	4,164	△13,745	30,873	3,919	△11,742	△9,166	△322
現金及び現金同等物の期首残高	Cash and Cash Equivalents at the Beginning of the Year	50,311	54,475	40,730	71,662	75,582	75,582	63,839
現金及び現金同等物の期末残高	Cash and Cash Equivalents at the End of the Year	54,475	40,730	71,662	75,582	63,839	66,415	63,518

設備投資

Capital Expenditures

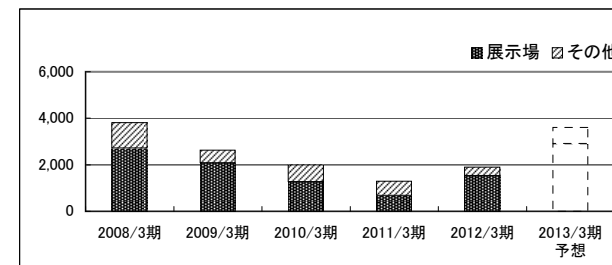
(資本的支出 Capital Investment)

Fiscal Years Ended/Ending March 31	(百万円・¥Million)						(百万円・¥Million)	
	2008/3期	2009/3期	2010/3期	2011/3期	2012/3期	2013/3期 予想 Forecast	2012/3期 中間 Interim of Fiscal Year	2013/3期 中間 Interim of Fiscal Year
有形固定資産 Tangible fixed assets	9,578	24,075	10,636	11,923	10,970	9,600	6,142	2,950
無形固定資産 ※ Intangible fixed assets	1,694	2,013	1,561	2,434	2,786	3,100	711	827
その他 Others	222	150	395	215	194	200	66	169
合計 Total	11,494	26,238	12,592	14,572	13,950	12,900	6,919	3,946
減価償却費 Depreciation	7,258	8,477	8,502	8,437	8,469	9,300	4,067	4,324



(リース Finance Leases)

Fiscal Years Ended/Ending March 31	(百万円・¥Million)						(百万円・¥Million)	
	2008/3期	2009/3期	2010/3期	2011/3期	2012/3期	2013/3期 予想 Forecast	2012/3期 中間 Interim of Fiscal Year	2013/3期 中間 Interim of Fiscal Year
展示場 Model Houses	2,714	2,076	1,264	675	1,534	2,900	706	705
その他 Others	1,103	554	725	615	361	700	215	630
合計 Total	3,817	2,631	1,989	1,290	1,895	3,600	921	1,335



※ 会計基準の変更により、2009年3月期以降の資本的支出にはリースが含まれております。

Figures of Capital Investment from 2009 to 2013 include Finance Leases under new financial accounting standards.

※ 無形固定資産には、ソフトウェアや借地権等が含まれております。

Intangible fixed assets include software and leasehold rights etc.

受注の状況

The State of Orders



<受注の推移 Change in Orders>

(百万円・¥Million)

Fiscal Years Ended/Ending March 31		2008/3期	2009/3期	2010/3期	2011/3期	2012/3期	2013/3期 予想 Forecast	2012/3期 中間 Interim of Fiscal Year	2013/3期 中間 Interim of Fiscal Year
戸建注文住宅 Custom-built Detached Houses	金額	295,413	268,889	265,203	284,420	295,194	310,500	150,520	159,443
	棟数・Unit	9,301	8,703	8,593	8,926	8,962	9,000	4,606	4,628
	単価・Price per unit	31.8	30.9	30.9	31.9	32.9	34.5	32.7	34.5
木造アパート Wooden Apartment	金額	5,954	6,439	6,969	7,343	11,169	12,500	5,532	5,338
	戸数・Unit	702	758	736	775	986	1,250	485	507
	単価・Price per unit	8.5	8.5	9.5	9.5	11.3	10.0	11.4	10.5
その他請負 Other contracts	金額	6,280	4,423	3,069	160	585	1,200	528	104

販売の状況

The State of Sales



<販売の推移 Change in Sales>

(百万円・¥Million)

Fiscal Years Ended/Ending March 31		2008/3期	2009/3期	2010/3期	2011/3期	2012/3期	2013/3期 予想 Forecast	2012/3期 中間 Interim of Fiscal Year	2013/3期 中間 Interim of Fiscal Year
戸建注文住宅 Custom-built Detached Houses	金額	296,861	294,551	264,215	270,903	294,081	298,000	131,155	133,493
	棟数・Unit	9,408	9,297	8,580	8,721	9,007	9,000	4,076	4,037
	単価・Price per unit	31.6	31.7	30.8	31.1	32.7	33.1	32.2	33.1
木造アパート Wooden Apartment	金額	4,360	5,729	5,630	6,681	7,899	9,400	2,569	2,528
	戸数・Unit	519	674	670	724	772	959	263	219
	単価・Price per unit	8.4	8.5	8.4	9.2	10.2	9.8	9.8	11.5
その他請負 Other contracts	金額	7,560	3,983	8,028	3,558	585	1,000	339	104
戸建分譲住宅 ※2 Spec Homes	金額	2,718	3,253	7,851	9,567	9,862	11,300	4,070	5,411
	棟数・Unit	118	144	183	226	225	250	97	117
	単価・Price per unit	23.0	22.6	42.9	42.3	43.8	45.2	42.0	46.2
注文住宅用土地 Land for Custom-built Detached Houses	金額	-	-	6,002	5,784	4,987	4,300	2,262	2,150
不動産開発 ※2 Real estate Development	金額	-	-	1,986	9,704	7,306	15,000	2,337	4,305
その他 Others	金額	-	-	7,332	6,919	11,409	9,400	6,591	3,589
北米住宅事業 ※3 Housing Business in the USA	金額	5,780	1,547	2,577	2,183	2,564	3,390	1,280	1,894
	棟数・Unit	69	23	58	58	83	110	42	63

※1 2010/3期以降の金額は工事進行基準を適用しています。

Percentage-of-completion method adopted from Interim of fiscal year 2010.

※2 2010/3期以降は土地と建物の合計数値を記載しております。

Figures from Interim of fiscal year 2010 include buildings and lands.

※3 同事業は連結子会社であるSFC Homes LLC社により営まれております。

SFC Homes LLC(consolidated subsidiary) is engaged in this business.

参考データ

Reference Data

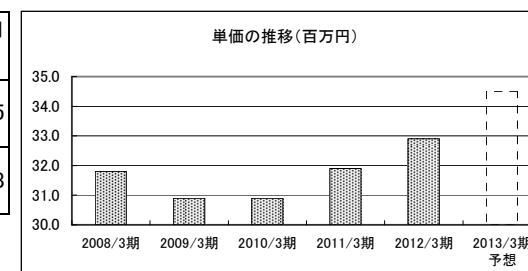
戸建注文住宅 1棟当たり平均データ

Average Data of Custom-built Detached House



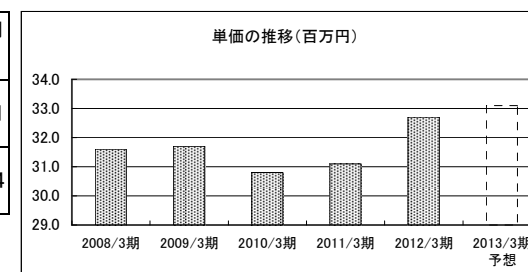
(受注ベース Contract Base)

Fiscal Years Ended/Ending March 31	2008/3期	2009/3期	2010/3期	2011/3期	2012/3期	2013/3期 予想 Forecast	2013/3期 中間 Interim of Fiscal Year
単価(百万円) Orders per Detached House (¥ Million)	31.8	30.9	30.9	31.9	32.9	34.5	34.5
坪数(坪) Floor Space in Tsubo(≒3.3㎡)	41.7	40.9	40.1	39.6	39.6	-	39.8



(完工ベース Delivered Base)

Fiscal Years Ended/Ending March 31	2008/3期	2009/3期	2010/3期	2011/3期	2012/3期	2013/3期 予想 Forecast	2013/3期 中間 Interim of Fiscal Year
単価(百万円) Sales per Detached House (¥ Million)	31.6	31.7	30.8	31.1	32.7	33.1	33.1
坪数(坪) Floor Space in Tsubo(≒3.3㎡)	43.3	42.4	41.4	40.8	40.6	-	40.4



※1 2010/3期より、工事進行基準の数値を記載しております。2009/3期以前は工事完成基準の数値を表示しております。

Percentage-of-completion method adopted from Interim of fiscal year 2010. Figures from 2008 to 2009 are completed-contract method.

※2 本体工事に加え、付帯工事、外構工事等の金額を含む単価を示しております。

Orders and Sales per Detached House include the amount of house construction, appurtenant work and exterior landscaping work.

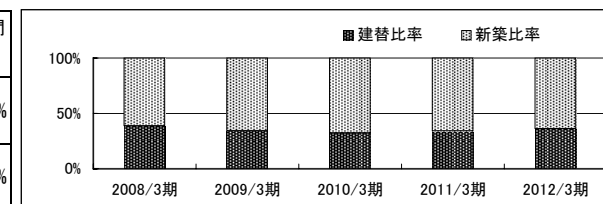
戸建注文住宅 参考指標

Reference Data of Custom-built Detached House



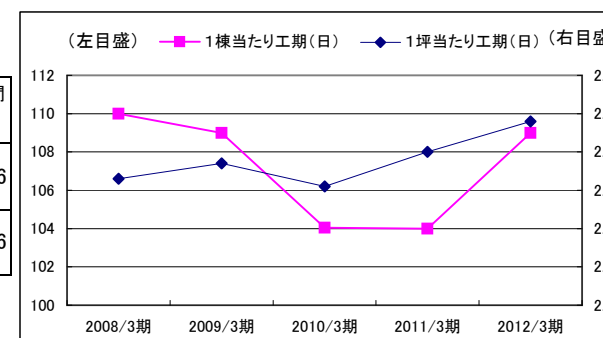
Fiscal Years Ended/Ending March 31	2008/3期	2009/3期	2010/3期	2011/3期	2012/3期	2013/3期 予想 Forecast
新築比率 Percentage of New Building	61.3%	65.6%	67.5%	65.8%	63.9%	-
建替比率 Percentage of Rebuilding	38.7%	34.4%	32.5%	34.2%	36.1%	-

2013/3期 中間 Interim of Fiscal Year
64.3%
35.7%



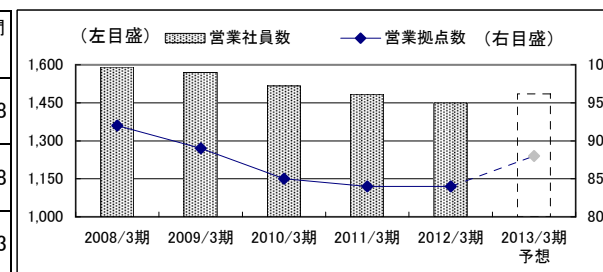
Fiscal Years Ended/Ending March 31	2008/3期	2009/3期	2010/3期	2011/3期	2012/3期	2013/3期 予想 Forecast
1棟当たり工期(日) Construction Period per House (Days)	110	109	104	104	109	-
1坪当たり工期(日) Construction Period per Tsubo(≒3.3㎡) (Days)	2.5	2.6	2.5	2.6	2.7	-

2013/3期 中間 Interim of Fiscal Year
106
2.6



Fiscal Years Ended/Ending March 31	2008/3期	2009/3期	2010/3期	2011/3期	2012/3期	2013/3期 予想 Forecast
営業社員数 Number of Sales Staff	1,591	1,570	1,517	1,484	1,450	1,485
営業拠点数 Number of Sales Offices	92	89	85	84	84	88
展示場数 Number of Housing Display Centers	344	321	304	287	287	293

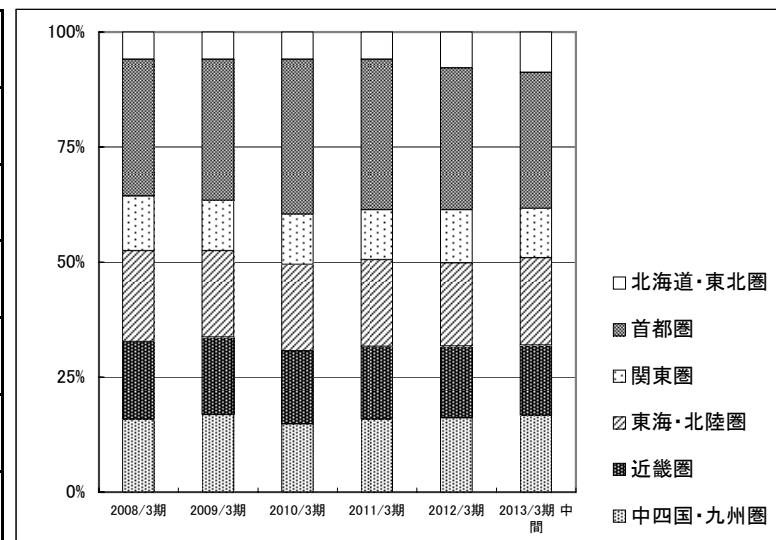
2013/3期 中間 Interim of Fiscal Year
1,488
88
293



戸建注文住宅 地域別受注棟数構成

Custom-built Detached House Orders by Region

Fiscal Years Ended March 31	2008/3期	2009/3期	2010/3期	2011/3期	2012/3期	2013/3期 中間 Interim of Fiscal Year
北海道・東北圏 Hokkaido and Tohoku Areas	6%	6%	6%	6%	8%	9%
首都圏 Tokyo Metropolitan Area	30%	31%	34%	33%	31%	30%
関東圏 Kanto Area	12%	11%	11%	11%	12%	11%
東海・北陸圏 Tokai and Hokuriku Areas	20%	19%	19%	19%	18%	19%
近畿圏 Kinki Area	17%	17%	16%	16%	16%	15%
中四国・九州圏 Chugoku,Shikoku and Kyusyu Areas	16%	17%	15%	16%	16%	17%



戸建注文住宅 階層別棟数構成

Ratio by the number of stories for Custom-built Detached Houses

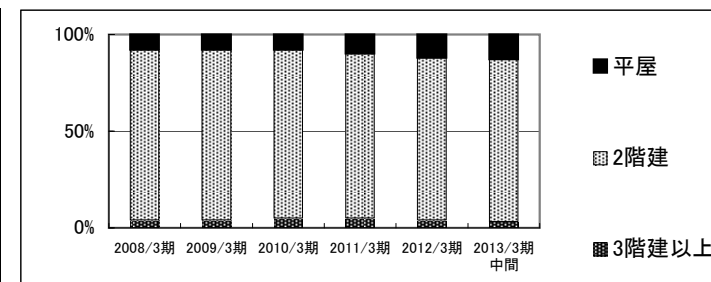


(受注ベース Contract Base)

※ Fiscal Years Ended March 31

階層別 the number of stories	2008/3期	2009/3期	2010/3期	2011/3期	2012/3期
平屋 House of one story	8%	8%	8%	10%	12%
2階建 Two-story house	88%	88%	87%	85%	84%
3階建以上 Three-story house	4%	4%	5%	5%	4%

2013/3期 中間 Interim of Fiscal Year	13%
	84%
	3%

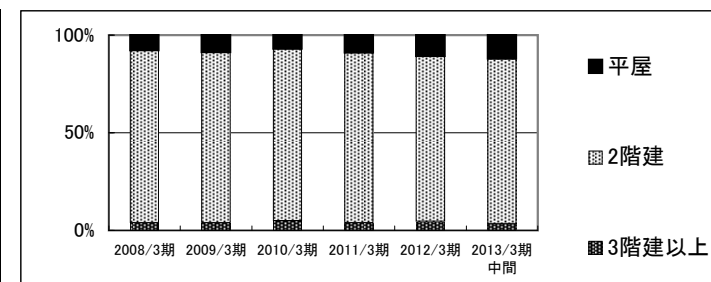


(完工ベース Delivered Base)

※ Fiscal Years Ended March 31

階層別 the number of stories	2008/3期	2009/3期	2010/3期	2011/3期	2012/3期
平屋 House of one story	8%	9%	7%	9%	11%
2階建 Two-story house	89%	88%	88%	87%	84%
3階建以上 Three-story house	4%	4%	5%	4%	5%

2013/3期 中間 Interim of Fiscal Year	12%
	85%
	3%



木材・建材 商品別売上高(単体)

Timber and Building Materials Sales by Product Category (Non-Consolidated)



(百万円・¥Million)

Fiscal Years Ended March 31			2008/3期	2009/3期	2010/3期	2011/3期	2012/3期	2012/3期 中間 Interim of Fiscal Year	2013/3期 中間 Interim of Fiscal Year
木材 Timber	原木、チップ Logs and chips	国内 Logs-Domestic	3,670	4,243	3,847	3,817	4,325	2,197	2,206
		輸入 Logs-Imported	23,600	16,403	7,604	10,104	9,893	5,403	5,029
			27,270	20,646	11,451	13,920	14,218	7,601	7,235
	製材品 Lumber	国内 Lumber-Domestic	31,481	27,956	23,854	24,489	23,570	12,620	11,818
		輸入 Lumber-Imported	43,061	34,523	23,181	33,360	33,910	18,505	15,354
			74,542	62,479	47,035	57,849	57,480	31,125	27,173
	その他 Others		192	138	108	8	-	-	-
		102,004	83,263	58,593	71,777	71,698	38,726	34,407	
建材 Building Materials	パネル Board	国内 Board-Domestic	28,099	23,378	18,190	20,999	20,598	10,408	9,801
		輸入 Board-Imported	48,145	39,407	27,957	35,827	43,581	22,297	19,016
			76,243	62,785	46,147	56,826	64,180	32,705	28,817
	一般建材 Building Materials	木質加工建材 Wood Processed Construction Materials	48,968	45,863	41,218	44,383	45,094	21,655	21,647
		窯業建材 Ceramic Construction Materials	56,840	56,269	51,767	59,909	60,944	29,596	30,146
		金属建材 Metal Construction Materials	27,794	26,863	23,979	25,350	25,511	13,397	11,930
		住宅機器 Housing Equipment	44,451	43,522	41,788	44,400	44,550	21,724	21,184
		その他 Others	4,075	4,035	3,837	4,114	3,907	1,907	1,881
			182,127	176,551	162,589	178,156	180,006	88,279	86,789
	イノス INOS Group		6,415	5,970	4,912	4,083	3,751	1,968	1,487
	その他 Others		23,935	22,579	19,221	22,063	22,930	11,338	11,299
		288,721	267,886	232,869	261,128	270,866	134,291	128,392	
木材・建材計 Total - Timber and Building Materials		390,725	351,148	291,462	332,904	342,564	173,017	162,799	

木材・建材 市況

Market Data of Timber and Building Materials

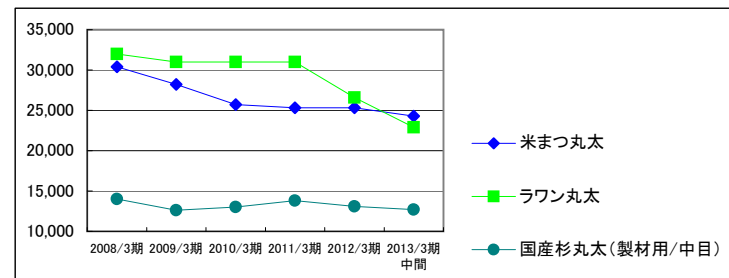


(出典) 農林水産省「木材価格統計表」ほか
From "Wood products prices statistics" by
Ministry of Agriculture, Forestry and Fisheries, and others.

(原木市況 Logs)

Fiscal Years Ended March 31	2008/3期	2009/3期	2010/3期	2011/3期	2012/3期	2013/3期 中間 Interim of Fiscal Year
米まつ丸太 Douglas Fir	30,400	28,200	25,700	25,300	25,300	24,300
ラワン丸太 Lauan	32,000	31,000	31,000	31,000	26,600	22,900
国産杉丸太(製材用/中目) Japanese cedar	14,000	12,600	13,000	13,800	13,100	12,700

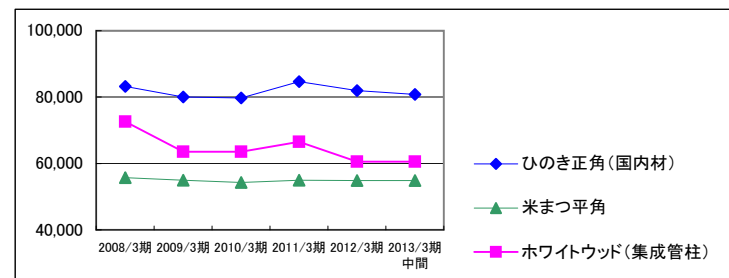
(円/m³・¥/m³)



(製材品市況 Lumber)

Fiscal Years Ended March 31	2008/3期	2009/3期	2010/3期	2011/3期	2012/3期	2013/3期 中間 Interim of Fiscal Year
ひのき正角(国内材) Japanese Cypress, squares (Domestic)	83,200	80,000	79,700	84,700	82,000	80,800
米まつ平角 Douglas Fir, slabs	55,700	55,000	54,300	55,000	54,900	54,900
ホワイトウッド(集成管柱) White Wood	72,600	63,500	63,500	66,500	60,500	60,500

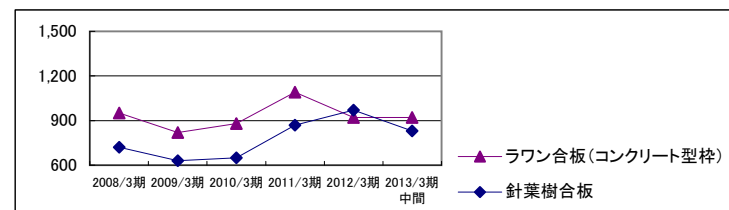
(円/m³・¥/m³)



(合板市況 Plywood)

Fiscal Years Ended March 31	2008/3期	2009/3期	2010/3期	2011/3期	2012/3期	2013/3期 中間 Interim of Fiscal Year
ラワン合板(コンクリート型枠) Hardwood	950	820	880	1,090	920	920
針葉樹合板 Softwood	720	630	650	870	970	830

(円/枚・¥/Sheet)



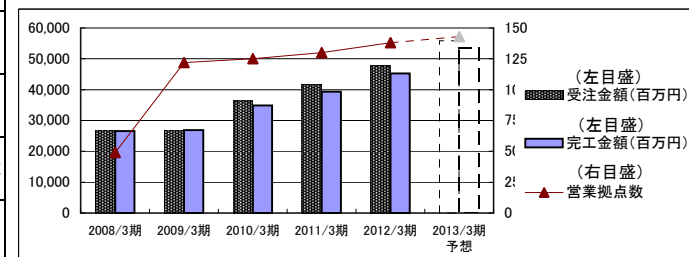
リフォーム事業と不動産流通事業の状況

Renovation business and Real Estate Brokerage



(住友林業ホームテック:リフォーム事業 Renovation business)

Fiscal Years Ended/Ending March 31	2008/3期	2009/3期	2010/3期	2011/3期	2012/3期	2013/3期 予想 Forecast	2012/3期 中間	2013/3期 中間
							Interim of Fiscal Year	Interim of Fiscal Year
受注金額(百万円) Price of Orders(¥Million)	26,935	26,839	36,330	41,754	47,792	55,800	24,670	27,341
完工金額(百万円) Price of Sales(¥Million)	26,606	26,900	34,875	39,325	45,278	53,500	21,198	23,831
受注残(百万円) Backlog of Orders Received at Term End (¥Million)	11,477	11,519	12,974	15,411	17,922	20,222	18,880	21,432
営業拠点数 Number of Sales Offices	49	122	125	130	138	143	136	141
住友林業OB比率* (受注金額ベース)	23%	23%	42%	47%	46%	45%	46%	45%



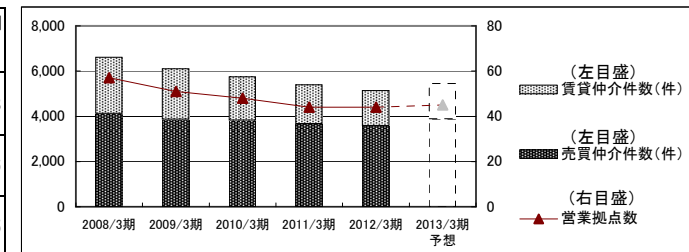
* Percentage of Orders received from Owners of Sumitomo Forestry's House.(Amount Base)

住友林業ホームテックの2009年3月期以降の営業拠点数は、2008年10月に合併したスミリンメンテナンスの数値を含んでおります。

Number of Sales Offices of Sumitomo Forestry Home Tech from 2009 to 2013 include the ones of Sumirin Maintenance which was merged in October 2008.

(住友林業ホームサービス:不動産仲介事業 Real Estate Brokerage)

Fiscal Years Ended/Ending March 31	2008/3期	2009/3期	2010/3期	2011/3期	2012/3期	2013/3期 予想 Forecast	2012/3期 中間	2013/3期 中間
							Interim of Fiscal Year	Interim of Fiscal Year
売買仲介件数(件) Number of Brokerage (Sales)	4,118	3,864	3,829	3,663	3,579	3,880	1,723	1,868
賃貸仲介件数(件) Number of Brokerage (Rent)	2,497	2,239	1,917	1,732	1,565	1,570	772	706
営業拠点数 Number of Sales Offices	57	51	48	44	44	45	44	45



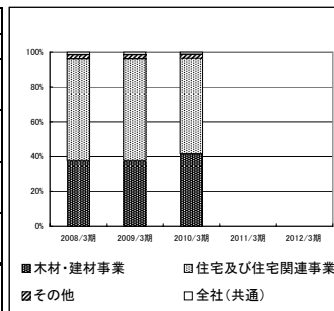
人員構成表

Number of Employees



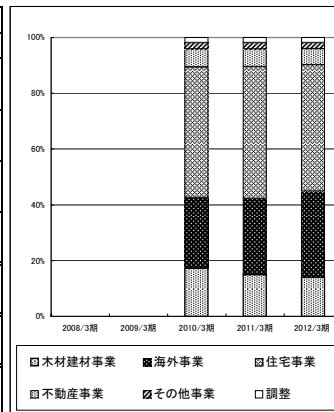
<旧セグメント(2007年度～2010年度) Previous segment(FY Ending March31 2007～2010)>

Fiscal Years Ended March 31	2008/3期		2009/3期		2010/3期		2011/3期		2012/3期		2013/3期 中間	
	構成比		構成比		構成比		構成比		構成比		Interim of Fiscal Year	構成比
木材・建材事業 Timber & Building Materials	4,736	37.8%	4,766	37.7%	5,653	41.6%	-	-	-	-	-	-
住宅及び住宅関連事業 Housing & Housing-related Businesses	7,332	58.5%	7,365	58.3%	7,455	54.8%	-	-	-	-	-	-
その他 Others	295	2.4%	311	2.5%	324	2.4%	-	-	-	-	-	-
全社(共通) Corporate	178	1.4%	187	1.5%	169	1.2%	-	-	-	-	-	-
合計 Total	12,541	100.0%	12,629	100.0%	13,601	100.0%	-	-	-	-	-	-



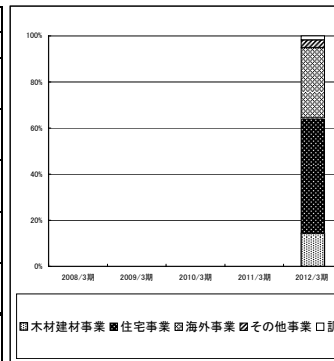
<旧セグメント(2010年度～2012年度) Previous segment(FY Ending March31 2010～2012)>

Fiscal Years Ended March 31	2008/3期		2009/3期		2010/3期		2011/3期		2012/3期		2013/3期 中間	
	構成比		構成比		構成比		構成比		構成比		Interim of Fiscal Year	構成比
木材建材事業 Timber & Building Materials Business	-	-	-	-	2,365	17.4%	2,062	15.0%	2,072	14.1%	-	-
海外事業 Overseas Business	-	-	-	-	3,429	25.2%	3,764	27.3%	4,540	30.8%	-	-
住宅事業 Housing Business	-	-	-	-	6,366	46.8%	6,519	47.3%	6,685	45.4%	-	-
不動産事業 Real Estate Business	-	-	-	-	873	6.4%	863	6.3%	854	5.8%	-	-
その他事業 Other Businesses	-	-	-	-	314	2.3%	310	2.2%	318	2.2%	-	-
調整(本社管理部門等) Adjustment (Administrative Division etc)	-	-	-	-	254	1.9%	260	1.9%	267	1.8%	-	-
合計 Total	12,541	100.0%	12,629	100.0%	13,601	100.0%	13,778	100.0%	14,736	100.0%	-	-



<新セグメント New segments >

Fiscal Years Ended March 31	2008/3期		2009/3期		2010/3期		2011/3期		2012/3期		2013/3期 中間	
	構成比		構成比		構成比		構成比		構成比		Interim of Fiscal Year	構成比
木材建材事業 Timber & Building Materials Business	-	-	-	-	-	-	-	-	2,114	14.3%	2,194	14.6%
住宅事業 Housing Business	-	-	-	-	-	-	-	-	7,372	50.0%	7,489	49.9%
海外事業 Overseas Business	-	-	-	-	-	-	-	-	4,498	30.5%	4,555	30.3%
その他事業 Other Businesses	-	-	-	-	-	-	-	-	495	3.4%	533	3.5%
調整(本社管理部門等) Adjustment (Administrative Division etc)	-	-	-	-	-	-	-	-	257	1.7%	249	1.7%
合計 Total	12,541	100.0%	12,629	100.0%	13,601	100.0%	13,778	100.0%	14,736	100.0%	15,020	100.0%



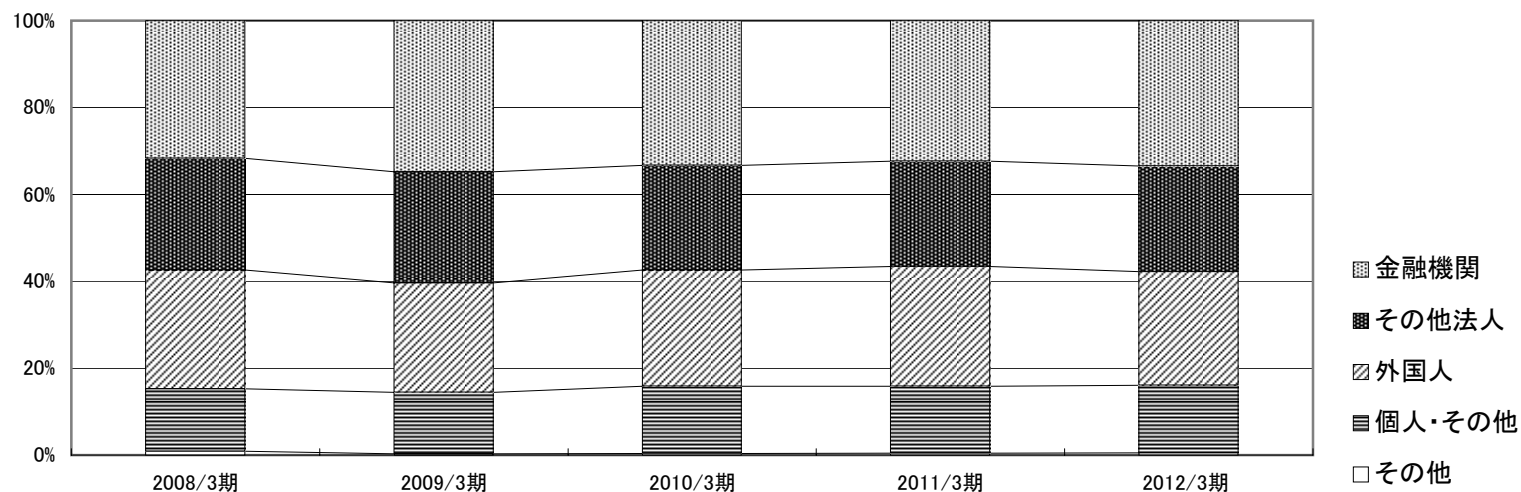
株式分布状況表

The State of Share Distribution



(千株・Thousand Shares)

Fiscal Years Ended March 31	2008/3期		2009/3期		2010/3期		2011/3期		2012/3期		2013/3期 中間	
		構成比		構成比		構成比		構成比		構成比	Interim of Fiscal Year	構成比
金融機関 Financial Institutions	56,155	31.69%	61,624	34.77%	58,993	33.28%	57,340	32.34%	59,359	33.48%	60,580	34.17%
その他法人 Other Companies	45,574	25.72%	45,384	25.60%	42,817	24.16%	42,990	24.25%	43,098	24.31%	40,632	22.92%
外国人 Foreigners	48,410	27.32%	44,701	25.22%	47,351	26.71%	48,839	27.55%	46,369	26.15%	45,123	25.45%
個人その他 Individuals and Others	25,561	14.42%	25,068	14.14%	27,494	15.51%	27,354	15.43%	27,489	15.51%	30,216	17.04%
その他 Others	1,507	0.85%	476	0.27%	602	0.34%	759	0.43%	969	0.55%	734	0.41%
合計 Total	177,207	100.00%	177,254	100.00%	177,258	100.00%	177,283	100.00%	177,285	100.00%	177,286	100.00%



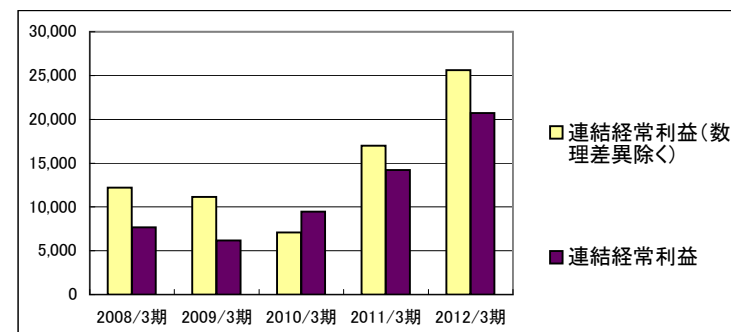
退職給付に係る数理差異の推移

Actuarial Difference Regarding Employees' Retirement Benefit Obligation

(推移 Change)

(百万円・¥Million)

Fiscal Years Ended March 31	2008/3期	2009/3期	2010/3期	2011/3期	2012/3期	2013/3期 中間 Interim of Fiscal Year
退職給付に係る数理差異 Actuarial Difference Regarding Employees' Retirement Benefit Obligation	△4,533	△4,999	2,364	△2,792	△4,916	—
連結経常利益(数理差異除く) Consolidated Recurring Income (Excluding Actuarial Difference)	12,192	11,159	7,101	16,998	25,631	—
連結経常利益 Consolidated Recurring Income	7,659	6,160	9,465	14,206	20,714	7,485

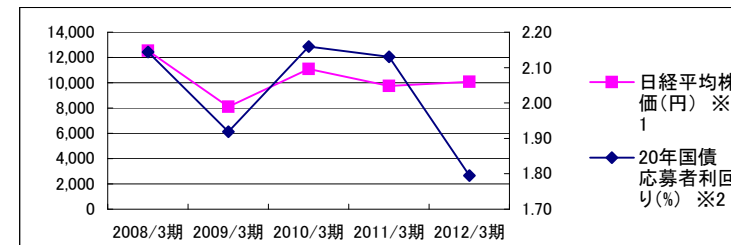


(出典)財務省統計データほか

From Statistical data by Ministry of Finance Japan and others

(参考データ Reference Data)

Fiscal Years Ended March 31	2008/3期	2009/3期	2010/3期	2011/3期	2012/3期	2013/3期 中間 Interim of Fiscal Year
日経平均株価(円) ※1 The Nikkei Stock Average (yen) *	12,526	8,110	11,090	9,755	10,084	8,870
20年国債 応募者利回り(%) ※2 Yield to Subscribers on Twenty-year JGB	2.14	1.92	2.16	2.13	1.80	1.67



※1「日経平均株価」は3月最終営業日の日経平均株価。

2013年/3期 中間は9月最終営業日の日経平均株価。

*1 As of the last working day in March. (Interim of Fiscal Year: as of the last working day in September.)

※2「20年国債応募者利回り」は、各期3月度に発行された20年国債の応募者利回り。

2013年/3期 中間は9月度に発行された20年国債の応募者利回り。

*2 Twenty-year JGBs issued in every March. (Interim of Fiscal Year: Twenty-year JGB issued in every September.)